


## Product datasheet

# Anti-DDX56/DDX21 antibody ab97648

[1 References](#) [4 Images](#)

### Overview

---

<b>Product name</b>	Anti-DDX56/DDX21 antibody
<b>Description</b>	Rabbit polyclonal to DDX56/DDX21
<b>Host species</b>	Rabbit
<b>Tested applications</b>	<b>Suitable for:</b> IHC-P, WB, ICC/IF
<b>Species reactivity</b>	<b>Reacts with:</b> Human <b>Predicted to work with:</b> Mouse, Rat, Cow 
<b>Immunogen</b>	Recombinant fragment corresponding to Human DDX56/DDX21 aa 251-403. (AAH01235)
<b>Positive control</b>	A549, HeLa, HepG2 and HCT116 cell lines; MCF7 xenograft ICC/IF: HeLa cells.
<b>General notes</b>	This product was previously labelled as DDX56

Reproducibility is key to advancing scientific discovery and accelerating scientists' next breakthrough.

Abcam is leading the way with our range of recombinant antibodies, knockout-validated antibodies and knockout cell lines, all of which support improved reproducibility.

We are also planning to innovate the way in which we present recommended applications and species on our product datasheets, so that only applications & species that have been tested in our own labs, our suppliers or by selected trusted collaborators are covered by our Abpromise™ guarantee.

In preparation for this, we have started to update the applications & species that this product is Abpromise guaranteed for.

We are also updating the applications & species that this product has been “predicted to work with,” however this information is not covered by our Abpromise guarantee.

Applications & species from publications and Abreviews that have not been tested in our own labs or in those of our suppliers are not covered by the Abpromise guarantee.

Please check that this product meets your needs before purchasing. If you have any questions, special requirements or concerns, please send us an inquiry and/or contact our Support team ahead of purchase. Recommended alternatives for this product can be found below, as well as customer reviews and Q&As.

### Properties

---

<b>Form</b>	Liquid
<b>Storage instructions</b>	Shipped at 4°C. Upon delivery aliquot. Store at -20°C or -80°C. Avoid freeze / thaw cycle.
<b>Storage buffer</b>	pH: 7.00 Preservative: 0.01% Thimerosal (merthiolate) Constituents: 1.21% Tris, 0.75% Glycine, 20% Glycerol (glycerin, glycerine)
<b>Purity</b>	Immunogen affinity purified
<b>Clonality</b>	Polyclonal
<b>Isotype</b>	IgG

## Applications

Our [Abpromise guarantee](#) covers the use of **ab97648** in the following tested applications.

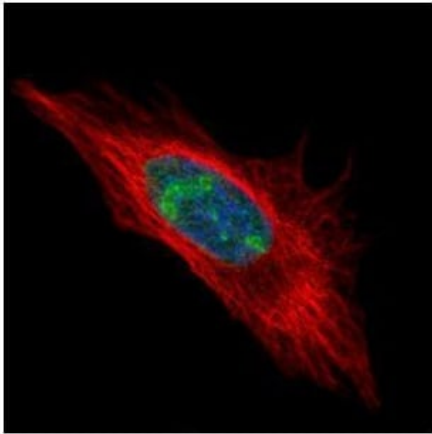
The application notes include recommended starting dilutions; optimal dilutions/concentrations should be determined by the end user.

Application	Abreviews	Notes
IHC-P		1/100 - 1/500.
WB		1/500 - 1/3000. Predicted molecular weight: 62 kDa.
ICC/IF		1/100 - 1/500.

## Target

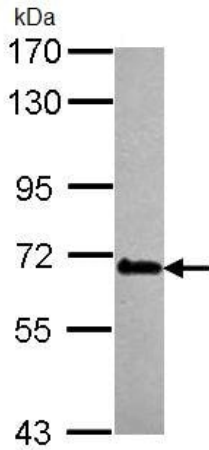
<b>Function</b>	May play a role in later stages of the processing of the pre-ribosomal particles leading to mature 60S ribosomal subunits. Has intrinsic ATPase activity.
<b>Tissue specificity</b>	Detected in heart, brain, liver, pancreas, placenta and lung.
<b>Sequence similarities</b>	Belongs to the DEAD box helicase family. DDX56/DBP9 subfamily. Contains 1 helicase ATP-binding domain. Contains 1 helicase C-terminal domain.
<b>Post-translational modifications</b>	Phosphorylated upon DNA damage, probably by ATM or ATR.
<b>Cellular localization</b>	Nucleus > nucleolus.

## Images



Immunocytochemistry/ Immunofluorescence - Anti-DDX56/DDX21 antibody (ab97648)

Paraformaldehyde-fixed HeLa cells stained for DDX56/DDX21 using ab97648 at 1/500 dilution in ICC/IF (green). Alpha tubulin filaments are detected with an ant-tubulin antibody (red).

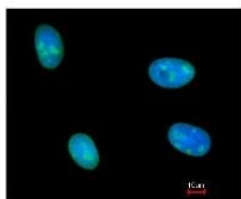
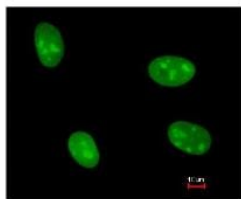


Western blot - Anti-DDX56/DDX21 antibody (ab97648)

Anti-DDX56/DDX21 antibody (ab97648) at 1/1000 dilution + HeLa whole cell lysate at 30  $\mu$ g

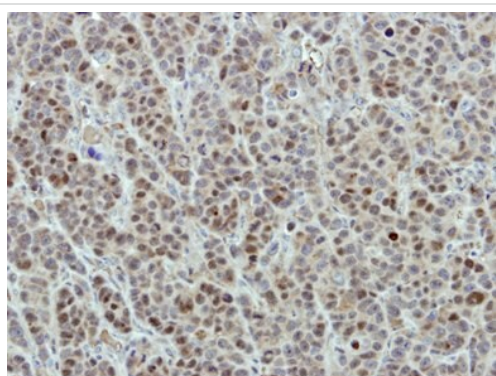
**Predicted band size:** 62 kDa

7.5% SDS PAGE



Immunocytochemistry/ Immunofluorescence - Anti-DDX56/DDX21 antibody (ab97648)

ab97648, at a 1/200 dilution, staining DDX56/DDX21 in paraformaldehyde fixed HeLa cells by Immunofluorescence. The lower image is costained with Hoechst 33342.



Immunohistochemistry (Formalin/PFA-fixed paraffin-embedded sections) - Anti-DDX56/DDX21 antibody (ab97648)

ab97648, at a 1/500 dilution, staining DDX56/DDX21 in formalin fixed, paraffin embedded MCF7 xenograft by Immunohistochemistry.

**Please note:** All products are "FOR RESEARCH USE ONLY. NOT FOR USE IN DIAGNOSTIC PROCEDURES"

#### **Our Abpromise to you: Quality guaranteed and expert technical support**

- Replacement or refund for products not performing as stated on the datasheet
- Valid for 12 months from date of delivery
- Response to your inquiry within 24 hours

- We provide support in Chinese, English, French, German, Japanese and Spanish
- Extensive multi-media technical resources to help you
- We investigate all quality concerns to ensure our products perform to the highest standards

If the product does not perform as described on this datasheet, we will offer a refund or replacement. For full details of the Abpromise, please visit <https://www.abcam.com/abpromise> or contact our technical team.

### **Terms and conditions**

---

- Guarantee only valid for products bought direct from Abcam or one of our authorized distributors