




Product datasheet

Anti-DDX6 antibody ab234837

3 Images

Overview

Product name	Anti-DDX6 antibody
Description	Rabbit polyclonal to DDX6
Host species	Rabbit
Tested applications	Suitable for: WB, ICC/IF, IHC-P
Species reactivity	<p>Reacts with: Human</p> <p>Predicted to work with: Mouse, Chicken, Xenopus laevis, Orangutan, Xenopus tropicalis </p>
Immunogen	<p>Recombinant fragment corresponding to Human DDX6 aa 1-149.</p> <p>Sequence:</p> <p>MSTARTENPVIMGLSSQNGQLRGPVKPTGGPGGGGTQTQ QQMNQLKNTNT INNGTQQQAQSMTTTIKPGDDWKKTLKLPKDLRIKTS DVT STKGNEFED YCLKRELLMGIFEMGWEEKPSPIQEESIPIALSGRDILARAKN GTGKSGA</p> <p>Database link: P26196</p> <p style="text-align: right;"> Run BLAST with  Run BLAST with</p>
Positive control	WB: HepG2 whole cell lysate (ab7900). IHC-P: Human colon cancer tissue. ICC/IF: HeLa cells.
General notes	<p>Reproducibility is key to advancing scientific discovery and accelerating scientists' next breakthrough.</p> <p>Abcam is leading the way with our range of recombinant antibodies, knockout-validated antibodies and knockout cell lines, all of which support improved reproducibility.</p> <p>We are also planning to innovate the way in which we present recommended applications and species on our product datasheets, so that only applications & species that have been tested in our own labs, our suppliers or by selected trusted collaborators are covered by our Abpromise™ guarantee.</p> <p>In preparation for this, we have started to update the applications & species that this product is Abpromise guaranteed for.</p> <p>We are also updating the applications & species that this product has been “predicted to work with,” however this information is not covered by our Abpromise guarantee.</p> <p>Applications & species from publications and Abreviews that have not been tested in our own labs or in those of our suppliers are not covered by the Abpromise guarantee.</p>

Please check that this product meets your needs before purchasing. If you have any questions, special requirements or concerns, please send us an inquiry and/or contact our Support team ahead of purchase. Recommended alternatives for this product can be found below, as well as customer reviews and Q&As.

Properties

Form	Liquid
Storage instructions	Shipped at 4°C. Store at +4°C short term (1-2 weeks). Upon delivery aliquot. Store at -20°C long term. Avoid freeze / thaw cycle.
Storage buffer	pH: 7.40 Constituents: 50% Glycerol (glycerin, glycerine), PBS, 0.03% Proclin 300
Purity	Protein G purified
Purification notes	Purity >95%.
Clonality	Polyclonal
Isotype	IgG

Applications

Our [Abpromise guarantee](#) covers the use of **ab234837** in the following tested applications.

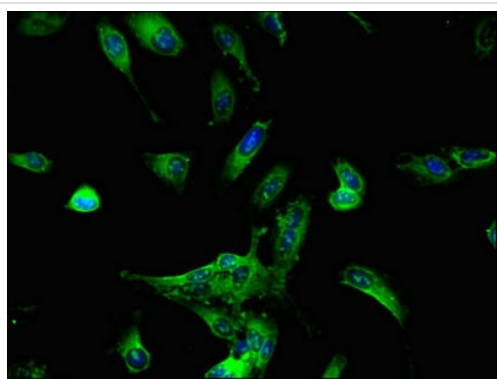
The application notes include recommended starting dilutions; optimal dilutions/concentrations should be determined by the end user.

Application	Abreviews	Notes
WB		1/1000 - 1/5000. Predicted molecular weight: 54 kDa.
ICC/IF		1/50 - 1/200.
IHC-P		1/20 - 1/200.

Target

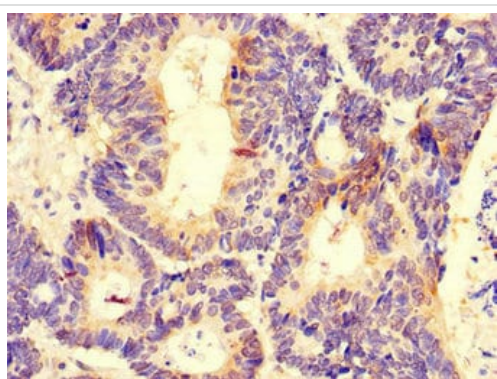
Relevance	DEAD box proteins, characterized by the conserved motif Asp-Glu-Ala-Asp (DEAD), are putative RNA helicases. They are implicated in a number of cellular processes involving alteration of RNA secondary structure such as translation initiation, nuclear and mitochondrial splicing, and ribosome and spliceosome assembly. Based on their distribution patterns, some members of this family are believed to be involved in embryogenesis, spermatogenesis and cellular growth and division. In the process of mRNA degradation, DDX6 may play a role in mRNA decapping. It forms a complex with DCP1A, DCP2, EDC3 and EDC4/HEDLS.
Cellular localization	Cytoplasm; P-body. Note: Processing bodies (PB).

Images



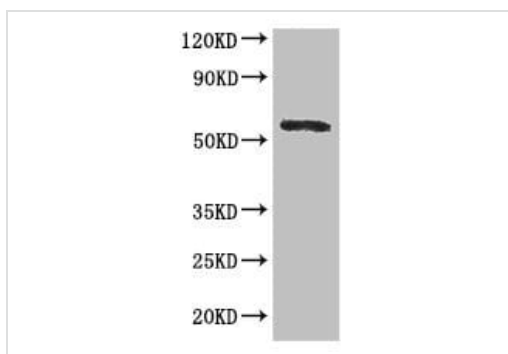
Immunocytochemistry/ Immunofluorescence - Anti-DDX6 antibody (ab234837)

HeLa (Human epithelial cell line from cervix adenocarcinoma) cells stained for DDX6 (green) using ab234837 at 1/100 dilution in ICC/IF, followed by Alexa Fluor 488[®] conjugated Goat Anti-Rabbit IgG (H+L).



Immunohistochemistry (Formalin/PFA-fixed paraffin-embedded sections) - Anti-DDX6 antibody (ab234837)

Paraffin-embedded human colon cancer tissue stained for DDX6 with ab234837 at 1/100 dilution in immunohistochemical analysis.



Western blot - Anti-DDX6 antibody (ab234837)

Anti-DDX6 antibody (ab234837) at 1/1000 dilution + HepG2 (Human liver hepatocellular carcinoma cell line) whole cell lysate

Secondary

Goat polyclonal to rabbit IgG at 1/50000 dilution

Predicted band size: 54 kDa

Please note: All products are "FOR RESEARCH USE ONLY. NOT FOR USE IN DIAGNOSTIC PROCEDURES"

Our Abpromise to you: Quality guaranteed and expert technical support

- Replacement or refund for products not performing as stated on the datasheet

- Valid for 12 months from date of delivery
- Response to your inquiry within 24 hours

- We provide support in Chinese, English, French, German, Japanese and Spanish
- Extensive multi-media technical resources to help you
- We investigate all quality concerns to ensure our products perform to the highest standards

If the product does not perform as described on this datasheet, we will offer a refund or replacement. For full details of the Abpromise, please visit <https://www.abcam.com/abpromise> or contact our technical team.

Terms and conditions

- Guarantee only valid for products bought direct from Abcam or one of our authorized distributors