

Product datasheet

Anti-DEDD2 antibody ab36858

1 Image

Overview

Product name	Anti-DEDD2 antibody
Description	Rabbit polyclonal to DEDD2
Host species	Rabbit
Tested applications	Suitable for: WB
Species reactivity	Reacts with: Mouse
Immunogen	A peptide corresponding to 11 amino acids near the amino-terminus of human DEDD2.
Positive control	RAW264.7 cell lysate.
General notes	<p>The Life Science industry has been in the grips of a reproducibility crisis for a number of years. Abcam is leading the way in addressing this with our range of recombinant monoclonal antibodies and knockout edited cell lines for gold-standard validation. Please check that this product meets your needs before purchasing.</p> <p>If you have any questions, special requirements or concerns, please send us an inquiry and/or contact our Support team ahead of purchase. Recommended alternatives for this product can be found below, along with publications, customer reviews and Q&As</p>

Properties

Form	Liquid
Storage instructions	Shipped at 4°C. Store at +4°C.
Storage buffer	pH: 7.2 Preservative: 0.02% Sodium azide Constituent: PBS
Purity	Immunogen affinity purified
Clonality	Polyclonal
Isotype	IgG

Applications

The Abpromise guarantee Our [Abpromise guarantee](#) covers the use of ab36858 in the following tested applications. The application notes include recommended starting dilutions; optimal dilutions/concentrations should be determined by the end user.

Application	Abreviews	Notes
WB		Use a concentration of 0.5 - 2 µg/ml. Detects a band of approximately 26 kDa (predicted molecular weight: 36 kDa).

Target

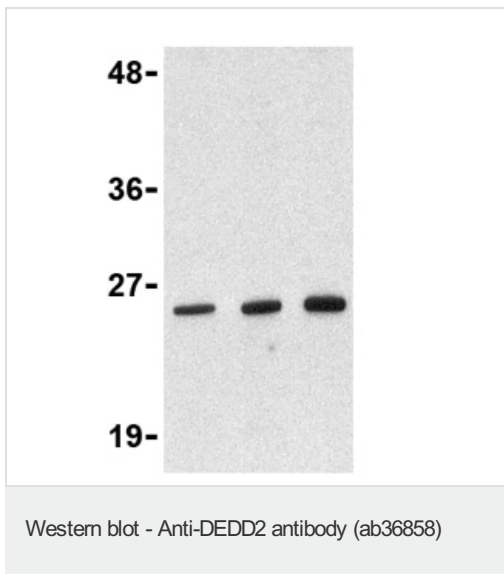
Relevance

Apoptotic signals are often triggered by cell surface death receptors through protein-protein interactions mediated by conserved domains such as the death effector domain. A novel death effector domain (DED)-containing protein, DEDD2, has been recently identified. Over-expression of DEDD2 in transfected cells induces moderate apoptosis and results in substantial sensitization to apoptosis induced by Fas, TRAIL, and FADD. More recently, it has been shown that DEDD2 can bind caspase-8 and -10 in addition to FLIP but not FADD. Like the related protein DEDD, DEDD2 translocates from the cytosol to the nucleus upon induction of apoptosis, and it has been suggested that DEDD2 may target caspase-8 to the nucleus and that DEDD2 thus plays a critical role in death receptor-induced apoptosis. At least two alternatively spliced transcript variants encoding distinct isoforms have been found for DEDD2.

Cellular localization

Nuclear, accumulated in subnuclear structures resembling nucleoli.

Images



Lane 1 : Anti-DEDD2 antibody (ab36858) at 0.5 µg/ml

Lane 2 : Anti-DEDD2 antibody (ab36858) at 1 µg/ml

Lane 3 : Anti-DEDD2 antibody (ab36858) at 2 µg/ml

All lanes : RAW264.7 cell lysate

Lysates/proteins at 15 µg/ml per lane.

Secondary

All lanes : Anti-rabbit IgG HRP at 1/10000 dilution

Predicted band size: 36 kDa

Observed band size: 26 kDa

Lanes read from left to right 1, 2 and 3.

Please note: All products are "FOR RESEARCH USE ONLY. NOT FOR USE IN DIAGNOSTIC PROCEDURES"

Our Abpromise to you: Quality guaranteed and expert technical support

- Replacement or refund for products not performing as stated on the datasheet
- Valid for 12 months from date of delivery
- Response to your inquiry within 24 hours

- We provide support in Chinese, English, French, German, Japanese and Spanish
- Extensive multi-media technical resources to help you
- We investigate all quality concerns to ensure our products perform to the highest standards

If the product does not perform as described on this datasheet, we will offer a refund or replacement. For full details of the Abpromise, please visit <https://www.abcam.com/abpromise> or contact our technical team.

Terms and conditions

- Guarantee only valid for products bought direct from Abcam or one of our authorized distributors