


Product datasheet

Anti-DEK antibody ab105175

1 Image

Overview

Product name	Anti-DEK antibody
Description	Rabbit polyclonal to DEK
Host species	Rabbit
Tested applications	Suitable for: WB
Species reactivity	Reacts with: Human Predicted to work with: Rat, Horse, Cow, Dog, Pig, Macaque monkey 
Immunogen	Synthetic peptide corresponding to Human DEK aa 50-150 conjugated to keyhole limpet haemocyanin. (Peptide available as ab116620)
Positive control	This antibody gave a positive signal in Human brain tissue lysate.
General notes	<p>Reproducibility is key to advancing scientific discovery and accelerating scientists' next breakthrough.</p> <p>Abcam is leading the way with our range of recombinant antibodies, knockout-validated antibodies and knockout cell lines, all of which support improved reproducibility.</p> <p>We are also planning to innovate the way in which we present recommended applications and species on our product datasheets, so that only applications & species that have been tested in our own labs, our suppliers or by selected trusted collaborators are covered by our Abpromise™ guarantee.</p> <p>In preparation for this, we have started to update the applications & species that this product is Abpromise guaranteed for.</p> <p>We are also updating the applications & species that this product has been “predicted to work with,” however this information is not covered by our Abpromise guarantee.</p> <p>Applications & species from publications and Abreviews that have not been tested in our own labs or in those of our suppliers are not covered by the Abpromise guarantee.</p> <p>Please check that this product meets your needs before purchasing. If you have any questions, special requirements or concerns, please send us an inquiry and/or contact our Support team ahead of purchase. Recommended alternatives for this product can be found below, as well as customer reviews and Q&As.</p>

Properties

Form	Liquid
Storage instructions	Shipped at 4°C. Store at +4°C short term (1-2 weeks). Upon delivery aliquot. Store at -20°C or -80°C. Avoid freeze / thaw cycle.
Storage buffer	pH: 7.40 Preservative: 0.02% Sodium azide Constituent: PBS
	Batches of this product that have a concentration < 1mg/ml may have BSA added as a stabilising agent. If you would like information about the formulation of a specific lot, please contact our scientific support team who will be happy to help.
Purity	Immunogen affinity purified
Clonality	Polyclonal
Isotype	IgG

Applications

Our [Abpromise guarantee](#) covers the use of **ab105175** in the following tested applications.

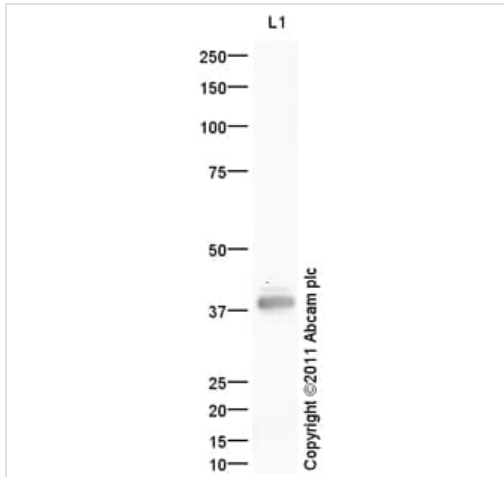
The application notes include recommended starting dilutions; optimal dilutions/concentrations should be determined by the end user.

Application	Abreviews	Notes
WB		Use a concentration of 1 µg/ml. Detects a band of approximately 43 kDa (predicted molecular weight: 43 kDa).

Target

Function	Involved in chromatin organization.
Tissue specificity	Ubiquitous. Expressed at relatively high levels.
Involvement in disease	A chromosomal aberration involving DEK is found in a subset of acute myeloid leukemia (AML); also known as acute non-lymphocytic leukemia (PubMed:1549122). Translocation t(6;9)(p23;q34) with NUP214/CAN (PubMed:1549122). It results in the formation of a DEK-NUP214 fusion gene (PubMed:1549122).
Sequence similarities	Contains 1 SAP domain.
Post-translational modifications	Phosphorylated by CK2. Phosphorylation fluctuates during the cell cycle with a moderate peak during G(1) phase, and weakens the binding of DEK to DNA.
Cellular localization	Nucleus. Enriched in regions where chromatin is decondensed or sparse in the interphase nuclei.

Images



Western blot - Anti-DEK antibody (ab105175)

Anti-DEK antibody (ab105175) at 1 µg/ml + Human brain tissue lysate - total protein (ab29466) at 10 µg

Secondary

Goat Anti-Rabbit IgG H&L (HRP) preadsorbed (ab97080) at 1/5000 dilution

Developed using the ECL technique.

Performed under reducing conditions.

Predicted band size: 43 kDa

Observed band size: 43 kDa

Exposure time: 8 minutes

Please note: All products are "FOR RESEARCH USE ONLY. NOT FOR USE IN DIAGNOSTIC PROCEDURES"

Our Abpromise to you: Quality guaranteed and expert technical support

- Replacement or refund for products not performing as stated on the datasheet
- Valid for 12 months from date of delivery
- Response to your inquiry within 24 hours
- We provide support in Chinese, English, French, German, Japanese and Spanish
- Extensive multi-media technical resources to help you
- We investigate all quality concerns to ensure our products perform to the highest standards

If the product does not perform as described on this datasheet, we will offer a refund or replacement. For full details of the Abpromise, please visit <https://www.abcam.com/abpromise> or contact our technical team.

Terms and conditions

- Guarantee only valid for products bought direct from Abcam or one of our authorized distributors