

Product datasheet

Anti-delta 1 Catenin/CAS antibody [EPR357(2)] ab92514

Recombinant RabMAb

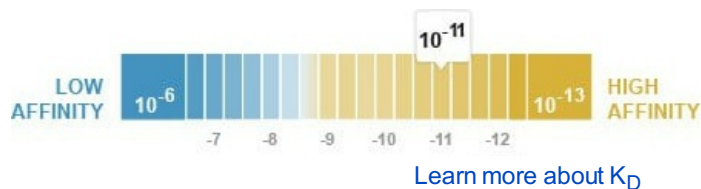
★★★★★ 10 Abreviews 15 References 8 Images

Overview

Product name	Anti-delta 1 Catenin/CAS antibody [EPR357(2)]
Description	Rabbit monoclonal [EPR357(2)] to delta 1 Catenin/CAS
Host species	Rabbit
Specificity	The mouse recommendation is based on the WB results. We do not guarantee IHC-P for mouse.
Tested applications	Suitable for: WB, IHC-P, Flow Cyt (Intra), ICC/IF
Species reactivity	Reacts with: Mouse, Human
Immunogen	Synthetic peptide within Human delta 1 Catenin/CAS aa 950 to the C-terminus. The exact sequence is proprietary.
Positive control	WB: HeLa, HEK-293T, RAW264.7, C2C12 and A431 cell lysates. IHC-P: Human breast carcinoma, ovarian cancer and colonic adenocarcinoma tissues. ICC/IF: A431 cells. Flow Cyt (intra): A431 cells.
General notes	<p>This product is a recombinant monoclonal antibody, which offers several advantages including:</p> <ul style="list-style-type: none"> - High batch-to-batch consistency and reproducibility - Improved sensitivity and specificity - Long-term security of supply - Animal-free production <p>For more information see here.</p> <p>Our RabMAb[®] technology is a patented hybridoma-based technology for making rabbit monoclonal antibodies. For details on our patents, please refer to RabMAb[®] patents.</p> <p>We are constantly working hard to ensure we provide our customers with best in class antibodies. As a result of this work we are pleased to now offer this antibody in purified format. We are in the process of updating our datasheets. The purified format is designated 'PUR' on our product labels. If you have any questions regarding this update, please contact our Scientific Support team.</p>

Properties

Form	Liquid
Storage instructions	Shipped at 4°C. Store at -20°C. Stable for 12 months at -20°C.
Dissociation constant (K_D)	K _D = 7.40 x 10 ⁻¹¹ M



Storage buffer	pH: 7.20 Preservative: 0.01% Sodium azide Constituents: 59% PBS, 40% Glycerol (glycerin, glycerine), 0.05% BSA
Purity	Protein A purified
Clonality	Monoclonal
Clone number	EPR357(2)
Isotype	IgG

Applications

The Abpromise guarantee Our [Abpromise guarantee](#) covers the use of ab92514 in the following tested applications. The application notes include recommended starting dilutions; optimal dilutions/concentrations should be determined by the end user.

Application	Abreviews	Notes
WB	★★★★★ (6)	1/1000 - 1/10000. Predicted molecular weight: 108 kDa.
IHC-P		1/50. Perform heat mediated antigen retrieval with Tris/EDTA buffer pH 9.0 before commencing with IHC staining protocol. Antigen retrieval and the use of an HRP/AP polymerized secondary antibody is recommended for enhanced staining. See IHC antigen retrieval protocols . For unpurified use at 1/100 - 1/250.
Flow Cyt (Intra)		1/20.
ICC/IF	★★★★★ (3)	1/100 - 1/250.

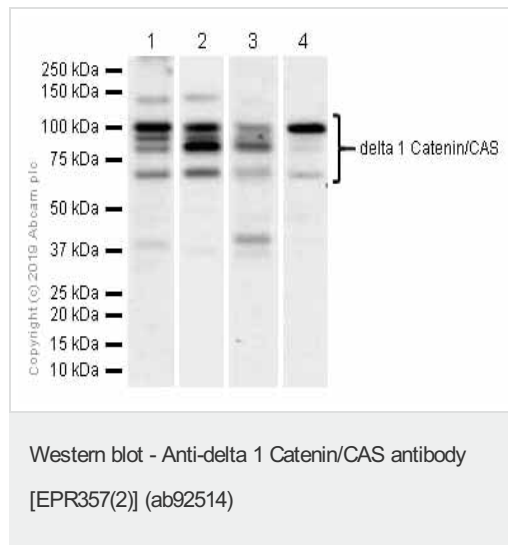
Target

Function	Binds to and inhibits the transcriptional repressor ZBTB33, which may lead to activation of target genes of the Wnt signaling pathway (By similarity). May associate with and regulate the cell adhesion properties of both C- and E-cadherins. Implicated both in cell transformation by SRC and in ligand-induced receptor signaling through the EGF, PDGF, CSF-1 and ERBB2 receptors. Promotes GLIS2 C-terminal cleavage.
Tissue specificity	Expressed in vascular endothelium.
Sequence similarities	Belongs to the beta-catenin family. Contains 10 ARM repeats.
Domain	A possible nuclear localization signal exists in all isoforms where Asp-626--631-Arg are deleted.
Post-translational modifications	Phosphorylated by protein-tyrosine kinases. Dephosphorylated by PTPRJ.

Cellular localization

Cytoplasm. Nucleus. Cell membrane. Interaction with GLIS2 promotes nuclear translocation (By similarity). NANOS1 induces its translocation from sites of cell-cell contact to the cytoplasm.

Images



All lanes : Anti-delta 1 Catenin/CAS antibody [EPR357(2)] (ab92514) at 1/1000 dilution (Purified)

Lane 1 : HeLa (Human cervix adenocarcinoma epithelial cell) whole cell lysates

Lane 2 : HEK-293 (Human epithelial cell line from embryonic kidney) whole cell lysates

Lane 3 : RAW264.7 (Mouse Abelson murine leukemia virus-induced tumor macrophage) whole cell lysates

Lane 4 : C2C12 (Mouse myoblasts myoblast) whole cell lysates

Lysates/proteins at 15 µg per lane.

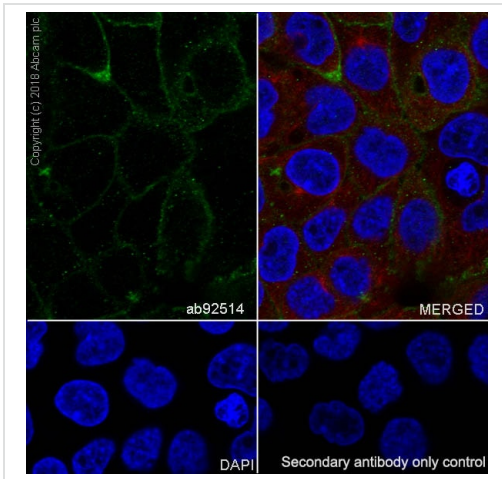
Secondary

All lanes : Goat Anti-Rabbit IgG H&L (HRP) (ab97051) at 1/20000 dilution

Predicted band size: 108 kDa

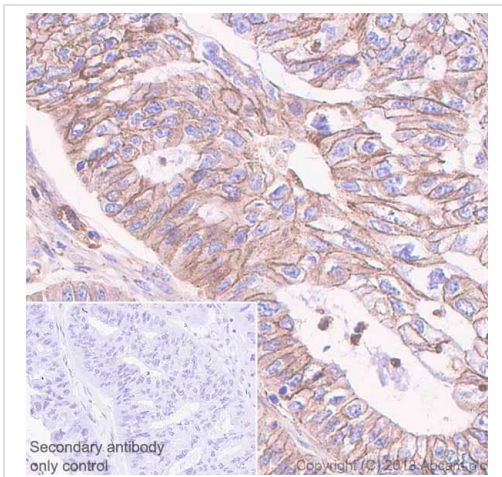
Observed band size: 70-120 kDa

The multiple bands are isoforms caused by alternatively splicing as was described in PMID 9653641 and are consistent with what has been described in PMID 15077190.



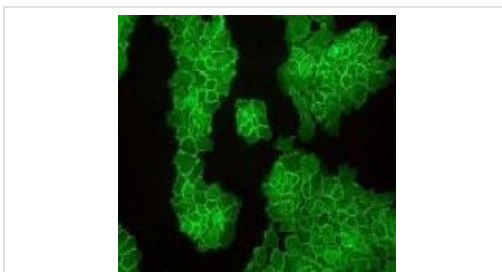
Immunocytochemistry/ Immunofluorescence - Anti-delta 1 Catenin/CAS antibody [EPR357(2)] (ab92514)

Immunocytochemistry/ Immunofluorescence analysis of A431 (Human epidermoid carcinoma epithelial cell) cells labeling delta 1 Catenin/CAS with purified ab92514 at 1:50 dilution (2.2 µg/ml). Cells were fixed in 4% Paraformaldehyde and permeabilized with 0.1% tritonX-100. Cells were counterstained with ab195889 Anti-alpha Tubulin antibody [DM1A] - Microtubule Marker (Alexa Fluor® 594) 1:200 (2.5 µg/ml). Goat anti rabbit IgG (Alexa Fluor® 488, ab150077) was used as the secondary antibody at 1:1000 (2 µg/ml) dilution. DAPI (blue) was used as nuclear counterstain. PBS instead of the primary antibody was used as the secondary antibody only control.



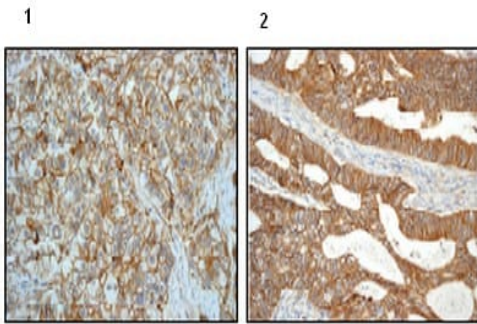
Immunohistochemistry (Formalin/PFA-fixed paraffin-embedded sections) - Anti-delta 1 Catenin/CAS antibody [EPR357(2)] (ab92514)

Immunohistochemistry (Formalin/PFA-fixed paraffin-embedded sections) analysis of human ovarian cancer tissue sections labeling delta 1 Catenin/CAS with purified ab92514 at 1:50 dilution (1.84 µg/ml). Heat mediated antigen retrieval was performed using ab93684 (Tris/EDTA buffer, pH 9.0). ImmunoHistoProbe one step HRP Polymer (ready to use) was used as the secondary antibody. Negative control: PBS instead of the primary antibody. Hematoxylin was used as a counterstain.



Immunocytochemistry/ Immunofluorescence - Anti-delta 1 Catenin/CAS antibody [EPR357(2)] (ab92514)

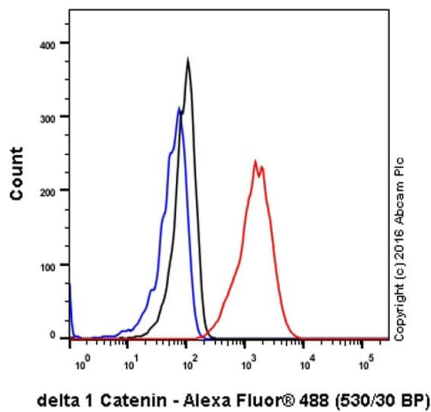
A431 (Human epidermoid carcinoma cell line) cells stained for delta 1 Catenin/CAS using unpurified ab92514 at a dilution of 1/100 in ICC/IF.



Immunohistochemistry (Formalin/PFA-fixed paraffin-embedded sections) - Anti-delta 1 Catenin/CAS antibody [EPR357(2)] (ab92514)

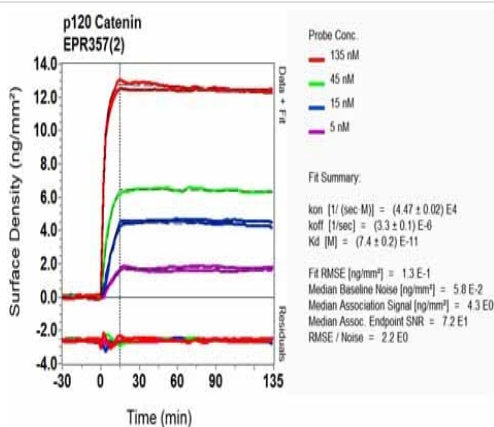
Paraffin embedded human breast carcinoma tissue (panel 1) and human colonic adenocarcinoma tissue (panel 2) labeled with unpurified ab92514 at 1/100 dilution.

Heat mediated antigen retrieval was performed with Tris/EDTA buffer pH 9.0 before commencing with IHC staining protocol.



Flow Cytometry (Intracellular) - Anti-delta 1 Catenin/CAS antibody [EPR357(2)] (ab92514)

Intracellular Flow Cytometry analysis of A431 (human epidermoid carcinoma) cells labeling delta 1 Catenin/CAS with unpurified ab92514 at 1/20 dilution (10µg/ml) (Red). Cells were fixed with 4% paraformaldehyde and permeabilized with 90% methanol. A Goat anti rabbit IgG (Alexa Fluor® 488) (1/2000 dilution) was used as the secondary antibody. Rabbit monoclonal IgG (Black) was used as the isotype control, cells without incubation with primary antibody and secondary antibody (Blue) was used as the unlabeled control.



OI-RD Scanning - Anti-delta 1 Catenin/CAS antibody [EPR357(2)] (ab92514)

Equilibrium disassociation constant (K_D)

Learn more about K_D

[Click here to learn more about \$K_D\$](#)

Why choose a recombinant antibody?



Research with confidence
Consistent and reproducible results



Long-term and scalable supply
Recombinant technology



Success from the first experiment
Confirmed specificity



Ethical standards compliant
Animal-free production

Anti-delta 1 Catenin/CAS antibody [EPR357(2)]
(ab92514)

Please note: All products are "FOR RESEARCH USE ONLY. NOT FOR USE IN DIAGNOSTIC PROCEDURES"

Our Abpromise to you: Quality guaranteed and expert technical support

- Replacement or refund for products not performing as stated on the datasheet
- Valid for 12 months from date of delivery
- Response to your inquiry within 24 hours
- We provide support in Chinese, English, French, German, Japanese and Spanish
- Extensive multi-media technical resources to help you
- We investigate all quality concerns to ensure our products perform to the highest standards

If the product does not perform as described on this datasheet, we will offer a refund or replacement. For full details of the Abpromise, please visit <https://www.abcam.com/abpromise> or contact our technical team.

Terms and conditions

- Guarantee only valid for products bought direct from Abcam or one of our authorized distributors