

## Product datasheet

# Anti-delta 1 Catenin/CAS antibody [YE372] ab32095

Recombinant RabMAb

★★★★☆ 1 Abreviews 1 References 5 Images

### Overview

<b>Product name</b>	Anti-delta 1 Catenin/CAS antibody [YE372]
<b>Description</b>	Rabbit monoclonal [YE372] to delta 1 Catenin/CAS
<b>Host species</b>	Rabbit
<b>Specificity</b>	This antibody is specific for human delta 1 Catenin/CAS (isoform 1ABC and 968AA). It also detects splice isoforms 1, 1A, 1B, 1C, 1AB, 1AC, 1BC, 2, 2A, 2B, 2C, 2AB, 2AC, 2BC and 2ABC of delta 1 Catenin/CAS.
<b>Tested applications</b>	<b>Suitable for:</b> WB, IHC-P, IP, Flow Cyt (Intra)
<b>Species reactivity</b>	<b>Reacts with:</b> Human
<b>Immunogen</b>	Synthetic peptide within Human delta 1 Catenin/CAS aa 50-150 (N terminal). The exact sequence is proprietary.
<b>Epitope</b>	ab32095 reacts with an epitope located in the N terminal region of delta 1 Catenin
<b>Positive control</b>	HeLa whole cell lysate ( <a href="#">ab150035</a> ). human breast carcinoma
<b>General notes</b>	<p>This product is a recombinant monoclonal antibody, which offers several advantages including:</p> <ul style="list-style-type: none"> <li>- High batch-to-batch consistency and reproducibility</li> <li>- Improved sensitivity and specificity</li> <li>- Long-term security of supply</li> <li>- Animal-free production</li> </ul> <p>For more information <a href="#">see here</a>.</p> <p>Our RabMAb<sup>®</sup> technology is a patented hybridoma-based technology for making rabbit monoclonal antibodies. For details on our patents, please refer to <a href="#">RabMAb<sup>®</sup> patents</a>.</p>

### Properties

<b>Form</b>	Liquid
<b>Storage instructions</b>	Shipped at 4°C. Upon delivery aliquot and store at -20°C. Avoid freeze / thaw cycles.
<b>Storage buffer</b>	<p>pH: 7.20</p> <p>Preservative: 0.01% Sodium azide</p> <p>Constituents: 49% PBS, 50% Glycerol (glycerin, glycerine), 0.05% BSA</p>
<b>Purity</b>	Protein A purified

<b>Clonality</b>	Monoclonal
<b>Clone number</b>	YE372
<b>Isotype</b>	IgG

## Applications

**The Abpromise guarantee** Our [Abpromise guarantee](#) covers the use of ab32095 in the following tested applications.

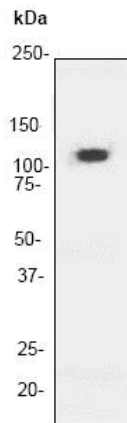
The application notes include recommended starting dilutions; optimal dilutions/concentrations should be determined by the end user.

Application	Abreviews	Notes
<b>WB</b>	★★★★☆ (1)	1/1000 - 1/5000. Predicted molecular weight: 108 kDa.
<b>IHC-P</b>		Use at an assay dependent concentration. Perform heat mediated antigen retrieval with citrate buffer pH 6 before commencing with IHC staining protocol.
<b>IP</b>		1/50.
<b>Flow Cyt (Intra)</b>		1/100. <a href="#">ab172730</a> - Rabbit monoclonal IgG, is suitable for use as an isotype control with this antibody.

## Target

<b>Function</b>	Binds to and inhibits the transcriptional repressor ZBTB33, which may lead to activation of target genes of the Wnt signaling pathway (By similarity). May associate with and regulate the cell adhesion properties of both C- and E-cadherins. Implicated both in cell transformation by SRC and in ligand-induced receptor signaling through the EGF, PDGF, CSF-1 and ERBB2 receptors. Promotes GLIS2 C-terminal cleavage.
<b>Tissue specificity</b>	Expressed in vascular endothelium.
<b>Sequence similarities</b>	Belongs to the beta-catenin family. Contains 10 ARM repeats.
<b>Domain</b>	A possible nuclear localization signal exists in all isoforms where Asp-626--631-Arg are deleted.
<b>Post-translational modifications</b>	Phosphorylated by protein-tyrosine kinases. Dephosphorylated by PTPRJ.
<b>Cellular localization</b>	Cytoplasm. Nucleus. Cell membrane. Interaction with GLIS2 promotes nuclear translocation (By similarity). NANOS1 induces its translocation from sites of cell-cell contact to the cytoplasm.

## Images

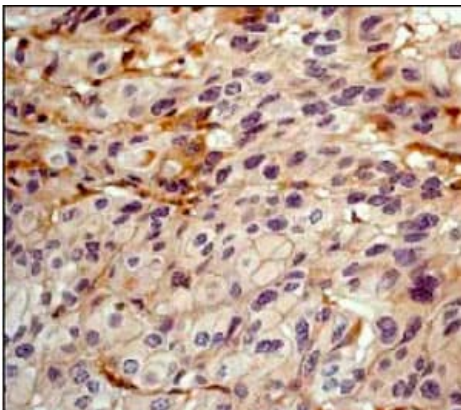


Western blot - Anti-delta 1 Catenin/CAS antibody [YE372] (ab32095)

Anti-delta 1 Catenin/CAS antibody [YE372] (ab32095) at 1/5000 dilution + Hela cell lysate.

**Predicted band size:** 108 kDa

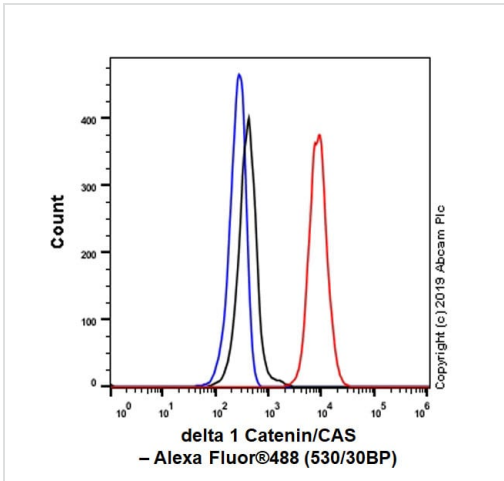
**Observed band size:** 120 kDa



Immunohistochemistry (Formalin/PFA-fixed paraffin-embedded sections) - Anti-delta 1 Catenin/CAS antibody [YE372] (ab32095)

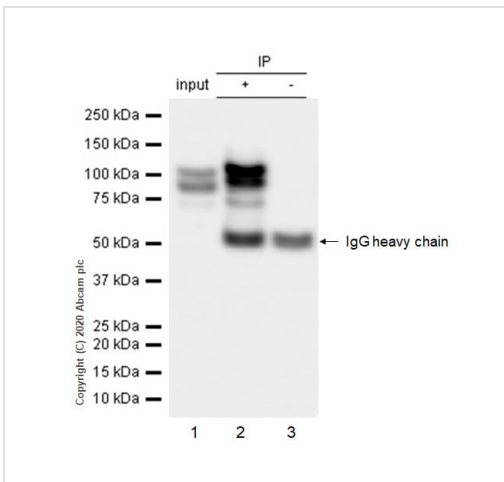
ab32095 at a 1/100 dilution staining delta 1 Catenin/CAS in human breast carcinoma, using Immunohistochemistry, Paraffin Embedded Tissue.

Perform heat mediated antigen retrieval with citrate buffer pH 6 before commencing with IHC staining protocol.



Flow Cytometry (Intracellular) - Anti-delta 1 Catenin/CAS antibody [YE372] (ab32095)

Intracellular Flow Cytometry analysis of HeLa (Human cervix adenocarcinoma epithelial cell) cells labeling delta 1 Catenin/CAS with purified ab32095 at 1/100 dilution (10 µg/mL) (Red). Cells were fixed with 4% Paraformaldehyde and permeabilised with 90% Methanol. A Goat anti rabbit IgG (Alexa Fluor® 488, [ab150077](#)) secondary antibody was used at 1/2000. Isotype control - Rabbit monoclonal IgG (Black). Unlabeled control - Cells without incubation with primary antibody and secondary antibody (Blue).



Immunoprecipitation - Anti-delta 1 Catenin/CAS antibody [YE372] (ab32095)

Purified ab32095 at 1/50 dilution (2µg) immunoprecipitating delta 1 Catenin/CAS in HeLa whole cell lysate.

Lane 1 (input): HeLa (Human cervix adenocarcinoma epithelial cell) whole cell lysate 10µg

Lane 2 (+): ab32095 + HeLa whole cell lysate.

Lane 3 (-): Rabbit monoclonal IgG ([ab172730](#)) instead of ab32095 in HeLa whole cell lysate.

VeriBlot for IP Detection Reagent (HRP) ([ab131366](#)) (1/1000 dilution) was used for Western blotting.

Blocking Buffer and concentration: 5% NFDm/TBST.

Diluting buffer and concentration: 5% NFDm/TBST.

Observed band size: 120 kDa

Multi-bands could be isoforms of delta 1 Catenin based on Uniprot.

**Why choose a recombinant antibody?**

**Research with confidence**  
Consistent and reproducible results

**Long-term and scalable supply**  
Recombinant technology

**Success from the first experiment**  
Confirmed specificity

**Ethical standards compliant**  
Animal-free production

Anti-delta 1 Catenin/CAS antibody [YE372] (ab32095)

**Please note:** All products are "FOR RESEARCH USE ONLY. NOT FOR USE IN DIAGNOSTIC PROCEDURES"

### **Our Abpromise to you: Quality guaranteed and expert technical support**

---

- Replacement or refund for products not performing as stated on the datasheet
- Valid for 12 months from date of delivery
- Response to your inquiry within 24 hours
  
- We provide support in Chinese, English, French, German, Japanese and Spanish
- Extensive multi-media technical resources to help you
- We investigate all quality concerns to ensure our products perform to the highest standards

If the product does not perform as described on this datasheet, we will offer a refund or replacement. For full details of the Abpromise, please visit <https://www.abcam.com/abpromise> or contact our technical team.

### **Terms and conditions**

---

- Guarantee only valid for products bought direct from Abcam or one of our authorized distributors