




Product datasheet

Anti-DEPDC7 antibody ab174659

1 References 2 Images

Overview

<b>Product name</b>	Anti-DEPDC7 antibody
<b>Description</b>	Rabbit polyclonal to DEPDC7
<b>Host species</b>	Rabbit
<b>Tested applications</b>	<b>Suitable for:</b> WB, IP
<b>Species reactivity</b>	<b>Reacts with:</b> Human <b>Predicted to work with:</b> Orangutan 
<b>Immunogen</b>	Synthetic peptide within Human DEPDC7 aa 461-511. The exact sequence is proprietary. NP_001070710.1. Sequence:  SNNTEKTTKDELLNLLKTLDEDSKLSAKEKKKLLGQFY KCHPDIFIEHFG D  Database link: <a href="#">Q96QD5</a>   <a href="#">Run BLAST with</a>  <a href="#">Run BLAST with</a>
<b>Positive control</b>	HeLa and 293T whole cell lysates.
<b>General notes</b>	This product was previously labelled as LOC91614

Properties

<b>Form</b>	Liquid
<b>Storage instructions</b>	Shipped at 4°C. Store at +4°C short term (1-2 weeks). Upon delivery aliquot. Store at -20°C long term. Avoid freeze / thaw cycle.
<b>Storage buffer</b>	Preservative: 0.09% Sodium azide Constituent: 99% Tris citrate/phosphate  pH 7-8
<b>Purity</b>	Immunogen affinity purified
<b>Purification notes</b>	ab174659 was affinity purified using an epitope specific to DEPDC7 immobilized on solid support.
<b>Clonality</b>	Polyclonal

Isotype

IgG

## Applications

Our [Abpromise guarantee](#) covers the use of **ab174659** in the following tested applications.

The application notes include recommended starting dilutions; optimal dilutions/concentrations should be determined by the end user.

Application	Abreviews	Notes
WB		1/1000 - 1/5000. Predicted molecular weight: 58 kDa.
IP		Use at 2-10 µg/mg of lysate.

## Target

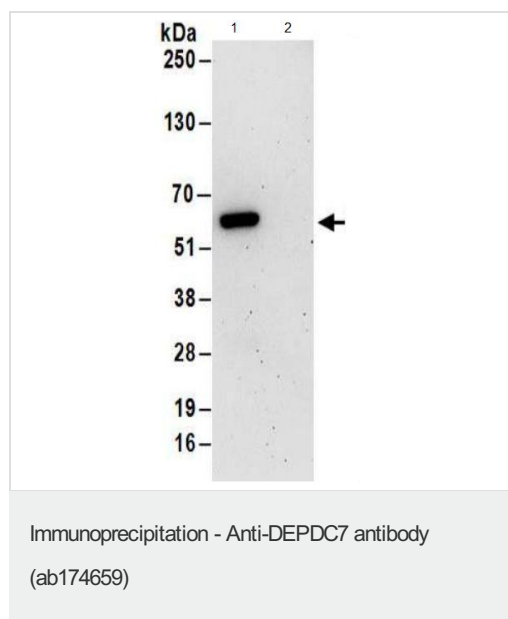
### Tissue specificity

Expressed in liver.

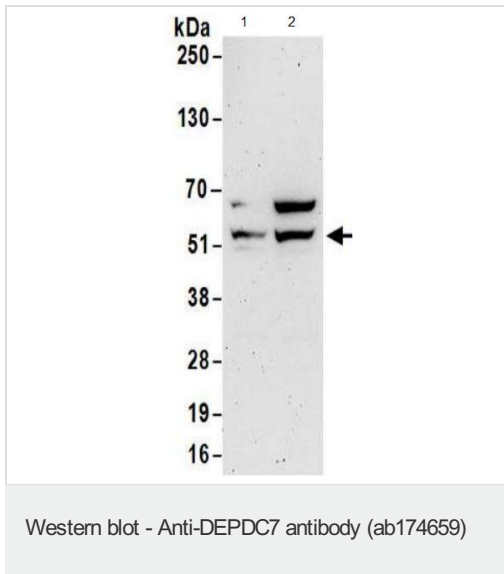
### Sequence similarities

Belongs to the DEPDC7 family.  
Contains 1 DEP domain.

## Images



Detection of DEPDC7 by Western Blot of Immunoprecipitate.



**All lanes :** Anti-DEPDC7 antibody (ab174659) at 0.400000005960464 µg/ml

**Lane 1 :** HeLa whole cell lysate

**Lane 2 :** 293T whole cell lysate

Lysates/proteins at 50 µg per lane.

Developed using the ECL technique.

**Predicted band size:** 58 kDa

**Exposure time:** 3 minutes

**Please note:** All products are "FOR RESEARCH USE ONLY. NOT FOR USE IN DIAGNOSTIC PROCEDURES"

### Our Abpromise to you: Quality guaranteed and expert technical support

- Replacement or refund for products not performing as stated on the datasheet
- Valid for 12 months from date of delivery
- Response to your inquiry within 24 hours
- We provide support in Chinese, English, French, German, Japanese and Spanish
- Extensive multi-media technical resources to help you
- We investigate all quality concerns to ensure our products perform to the highest standards

If the product does not perform as described on this datasheet, we will offer a refund or replacement. For full details of the Abpromise, please visit <https://www.abcam.com/abpromise> or contact our technical team.

### Terms and conditions

- Guarantee only valid for products bought direct from Abcam or one of our authorized distributors