

Product datasheet



Anti-Deptor antibody ab103298

2 Images

Overview

Product name	Anti-Deptor antibody
Description	Rabbit polyclonal to Deptor
Host species	Rabbit

Tested Applications & Species

Application	Species
WB	<ul style="list-style-type: none">  Mouse  Human

[See all applications and species data](#) ↓

Immunogen	Full length protein, corresponding to amino acids 1-409 of Human Deptor (AAH12040.1).
Positive control	Mouse liver tissue lysate; Deptor transfected 293T cell line

Properties

Form	Liquid
Storage instructions	Shipped at 4°C. Upon delivery aliquot and store at -20°C or -80°C. Avoid repeated freeze / thaw cycles.
Storage buffer	pH: 7.4 Constituent: PBS
Purity	Protein A purified
Clonality	Polyclonal
Isotype	IgG

Applications

The Abpromise guarantee Our [Abpromise guarantee](#) covers the use of **ab103298** in the following tested applications. The application notes include recommended starting dilutions; optimal dilutions/concentrations should be determined by the end user.

 **Guaranteed**

 **Predicted**

 **Incompatible**

Tested applications are guaranteed to work and covered by our Abpromise guarantee.

Predicted to work for this combination of applications and species but not guaranteed.

Does not work for this combination of applications and species.

Application	Species
WB	<input checked="" type="checkbox"/> Mouse <input checked="" type="checkbox"/> Human

Application	Abreviews	Notes
WB		1/500 - 1/1000. Predicted molecular weight: 46 kDa.

Target

Function

Negative regulator of the mTORC1 and mTORC2 signaling pathways. Inhibits the kinase activity of both complexes.

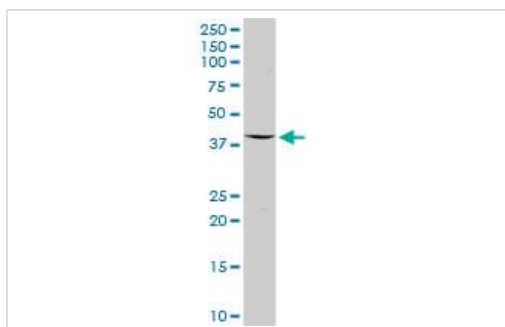
Sequence similarities

Contains 2 DEP domains.
Contains 1 PDZ (DHR) domain.

Post-translational modifications

Phosphorylated. Phosphorylation weakens interaction with MTOR within mTORC1 and mTORC2.

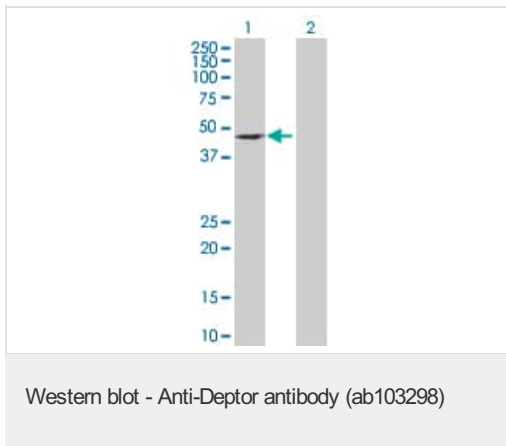
Images



Western blot - Anti-Deptor antibody (ab103298)

Anti-Deptor antibody (ab103298) at 1/500 dilution + Mouse liver tissue lysate at 50 μ g

Predicted band size: 46 kDa



All lanes : Anti-Deptor antibody (ab103298) at 1/500 dilution

Lane 1 : Deptor transfected 293T cell line lysate

Lane 2 : non transfected 293T cell line lysate

Lysates/proteins at 25 µg per lane.

Predicted band size: 46 kDa

Please note: All products are "FOR RESEARCH USE ONLY. NOT FOR USE IN DIAGNOSTIC PROCEDURES"

Our Abpromise to you: Quality guaranteed and expert technical support

- Replacement or refund for products not performing as stated on the datasheet
- Valid for 12 months from date of delivery
- Response to your inquiry within 24 hours
- We provide support in Chinese, English, French, German, Japanese and Spanish
- Extensive multi-media technical resources to help you
- We investigate all quality concerns to ensure our products perform to the highest standards

If the product does not perform as described on this datasheet, we will offer a refund or replacement. For full details of the Abpromise, please visit <https://www.abcam.com/abpromise> or contact our technical team.

Terms and conditions

- Guarantee only valid for products bought direct from Abcam or one of our authorized distributors