

Product datasheet

Anti-Desmin antibody ab8592

★★★★☆ 16 Abreviews 88 References 1 Image

Overview

Product name	Anti-Desmin antibody
Description	Rabbit polyclonal to Desmin
Host species	Rabbit
Specificity	In immunoblots, this antibody reacts with a 53 kD polypeptide. It does not react with vimentin or human cytokeratins. This antibody can be used to distinguish rhabdomyosarcomas and leiomyosarcomas from other soft tissue tumors, lymphomas, and carcinomas.
Tested applications	Suitable for: WB Unsuitable for: ICC/IF or IHC-P
Species reactivity	Reacts with: Mouse, Rat, Human
Immunogen	Full length protein corresponding to Human Desmin. Database link: P17661
General notes	Prolonged fixation in buffered formalin can destroy the epitope. The Life Science industry has been in the grips of a reproducibility crisis for a number of years. Abcam is leading the way in addressing this with our range of recombinant monoclonal antibodies and knockout edited cell lines for gold-standard validation. Please check that this product meets your needs before purchasing. If you have any questions, special requirements or concerns, please send us an inquiry and/or contact our Support team ahead of purchase. Recommended alternatives for this product can be found below, along with publications, customer reviews and Q&As

Properties

Form	Liquid
Storage instructions	Shipped at 4°C. Store at +4°C short term (1-2 weeks). Upon delivery aliquot. Store at -20°C long term. Avoid freeze / thaw cycle.
Storage buffer	pH: 7.40 Preservative: 0.1% Sodium azide Constituents: 0.01% PBS, 0.2% BSA
Purity	Protein G purified
Clonality	Polyclonal
Isotype	IgG

Applications

The Abpromise guarantee

Our [Abpromise guarantee](#) covers the use of ab8592 in the following tested applications.

The application notes include recommended starting dilutions; optimal dilutions/concentrations should be determined by the end user.

Application	Abreviews	Notes
WB	★★★★★ (5)	Use at an assay dependent concentration. Detects a band of approximately 53 kDa.

Application notes

Is unsuitable for ICC/IF or IHC-P.

Target

Function

Desmin are class-III intermediate filaments found in muscle cells. In adult striated muscle they form a fibrous network connecting myofibrils to each other and to the plasma membrane from the periphery of the Z-line structures.

Involvement in disease

Defects in DES are the cause of myopathy myofibrillar desmin-related (MFM-DES) [MIM:601419]; also known as desmin-related myopathy (DRM). A neuromuscular disorder characterized by skeletal muscle weakness associated with cardiac conduction blocks, arrhythmias, restrictive heart failure, and by myofibrillar destruction with intracytoplasmic accumulation of desmin-reactive deposits in cardiac and skeletal muscle cells.

Defects in DES are the cause of cardiomyopathy dilated type 1I (CMD1I) [MIM:604765]. Dilated cardiomyopathy is a disorder characterized by ventricular dilation and impaired systolic function, resulting in congestive heart failure and arrhythmia. Patients are at risk of premature death.

Defects in DES are the cause of neurogenic scapuloperoneal syndrome Kaeser type (Kaeser syndrome) [MIM:181400]. Kaeser syndrome is an autosomal dominant disorder with a peculiar scapuloperoneal distribution of weakness and atrophy. A large clinical variability is observed ranging from scapuloperoneal, limb girdle and distal phenotypes with variable cardiac or respiratory involvement. Facial weakness, dysphagia and gynaecomastia are frequent additional symptoms. Affected men seemingly bear a higher risk of sudden, cardiac death as compared to affected women. Histological and immunohistochemical examination of muscle biopsy specimens reveal a wide spectrum of findings ranging from near normal or unspecific pathology to typical, myofibrillar changes with accumulation of desmin.

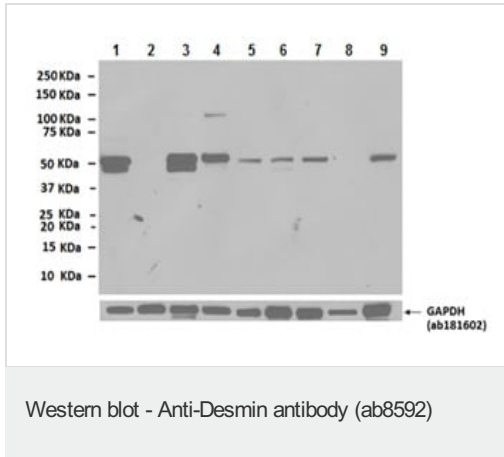
Sequence similarities

Belongs to the intermediate filament family.

Cellular localization

Cytoplasm.

Images



All lanes : Anti-Desmin antibody (ab8592) at 1/1000 dilution

Lane 1 : RMS13 cell lysate

Lane 2 : A431 cell lysate

Lane 3 : Human skeletal muscle tissue lysate

Lane 4 : Human heart tissue lysate

Lane 5 : C2C12 cell lysate

Lane 6 : Mouse skeletal muscle tissue lysate

Lane 7 : Mouse heart tissue lysate

Lane 8 : L6 cell lysate

Lane 9 : Rat heart tissue lysate

Lysates/proteins at 20 µg per lane.

Secondary

All lanes : Goat Anti-Rabbit IgG H&L (HRP) ([ab97051](#)) at 1/20000 dilution

Observed band size: 53 kDa

Exposure time: 3 minutes

Blocking and dilution buffer: 5% NFDm/TBST.

Please note: All products are "FOR RESEARCH USE ONLY. NOT FOR USE IN DIAGNOSTIC PROCEDURES"

Our Promise to you: Quality guaranteed and expert technical support

- Replacement or refund for products not performing as stated on the datasheet
- Valid for 12 months from date of delivery
- Response to your inquiry within 24 hours
- We provide support in Chinese, English, French, German, Japanese and Spanish
- Extensive multi-media technical resources to help you
- We investigate all quality concerns to ensure our products perform to the highest standards

If the product does not perform as described on this datasheet, we will offer a refund or replacement. For full details of the Abpromise, please visit <https://www.abcam.com/abpromise> or contact our technical team.

Terms and conditions

- Guarantee only valid for products bought direct from Abcam or one of our authorized distributors