


Product datasheet

Anti-Desmoglein 2/DSG2 antibody ab226184

2 Images

Overview

| | |
|----------------------------|---|
| Product name | Anti-Desmoglein 2/DSG2 antibody |
| Description | Rabbit polyclonal to Desmoglein 2/DSG2 |
| Host species | Rabbit |
| Tested applications | Suitable for: WB, IP |
| Species reactivity | Reacts with: Human Predicted to work with: Chimpanzee, Gorilla  |
| Immunogen | Synthetic peptide within Human Desmoglein 2/DSG2 aa 925-975. The exact sequence is proprietary. (NP_001934.2). Database link: Q14126 |
| Positive control | WB: HeLa and HEK-293T whole cell lysates. IP: HeLa whole cell lysate. |
| General notes | This product was previously labelled as Desmoglein 2 |

Properties

| | |
|-----------------------------|---|
| Form | Liquid |
| Storage instructions | Shipped at 4°C. Store at +4°C short term (1-2 weeks). Upon delivery aliquot. Store at -20°C long term. Avoid freeze / thaw cycle. |
| Storage buffer | Preservative: 0.09% Sodium azide Constituent: Tris citrate/phosphate pH 7 to 8 |
| Purity | Immunogen affinity purified |
| Purification notes | ab226184 was affinity purified using an epitope specific to Desmoglein 2/DSG2 immobilized on solid support. |
| Clonality | Polyclonal |
| Isotype | IgG |

Applications

Our [Abpromise guarantee](#) covers the use of **ab226184** in the following tested applications.

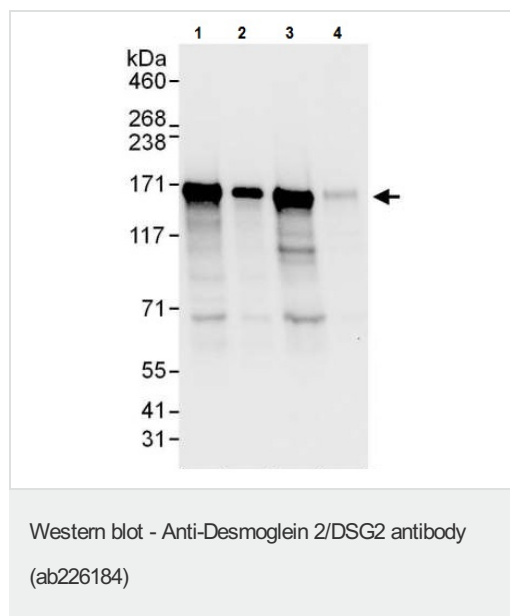
The application notes include recommended starting dilutions; optimal dilutions/concentrations should be determined by the end user.

| Application | Abreviews | Notes |
|-------------|-----------|--|
| WB | | 1/2000 - 1/10000. Predicted molecular weight: 122 kDa. |
| IP | | Use at 2-10 µg/mg of lysate. |

Target

| | |
|-------------------------------|---|
| Function | Component of intercellular desmosome junctions. Involved in the interaction of plaque proteins and intermediate filaments mediating cell-cell adhesion. |
| Tissue specificity | All of the tissues tested and carcinomas. |
| Involvement in disease | Defects in DSG2 are the cause of familial arrhythmogenic right ventricular dysplasia type 10 (ARVD10) [MIM:610193]; also known as arrhythmogenic right ventricular cardiomyopathy 10 (ARVC10). ARVD is an autosomal dominant disease characterized by partial degeneration of the myocardium of the right ventricle, electrical instability, and sudden death. It is clinically defined by electrocardiographic and angiographic criteria; pathologic findings, replacement of ventricular myocardium with fatty and fibrous elements, preferentially involve the right ventricular free wall. Genetic variations in DSG2 are the cause of susceptibility to cardiomyopathy dilated type 1BB (CMD1BB) [MIM:612877]. A disorder characterized by ventricular dilation and impaired systolic function, resulting in congestive heart failure and arrhythmia. Patients are at risk of premature death. |
| Sequence similarities | Contains 4 cadherin domains. |
| Domain | Calcium may be bound by the cadherin-like repeats. |
| Cellular localization | Cell membrane. Cell junction > desmosome. |

Images



All lanes : Anti-Desmoglein 2/DSG2 antibody (ab226184) at 0.1 µg/ml

Lane 1 : HeLa (human epithelial cell line from cervix adenocarcinoma) whole cell lysate at 50 µg

Lane 2 : HeLa (human epithelial cell line from cervix adenocarcinoma) whole cell lysate at 15 µg

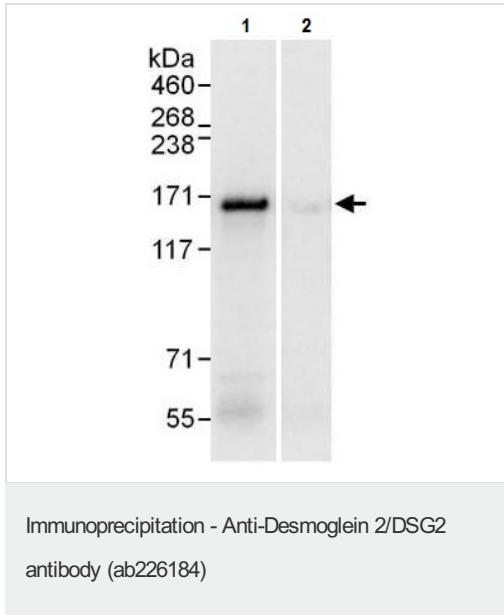
Lane 3 : HEK-293T (human epithelial cell line from embryonic kidney transformed with large T antigen) whole cell lysate at 50 µg

Lane 4 : Jurkat (human T cell leukemia cell line from peripheral blood) whole cell lysate at 50 µg

Developed using the ECL technique.

Predicted band size: 122 kDa

Exposure time: 3 seconds



Desmoglein 2/DSG2 was immunoprecipitated from HeLa (human epithelial cell line from cervix adenocarcinoma) whole cell lysate (1 mg for IP, 20% of IP loaded) with ab226184 at 6 µg/mg lysate. Western blot was performed from the immunoprecipitate using ab226184 at 1 µg/ml.

Lane 1: ab226184 IP in HeLa whole cell lysate.

Lane 2: Control IgG IP in HeLa whole cell lysate.

Detection: Chemiluminescence with exposure time of 1 second.

Please note: All products are "FOR RESEARCH USE ONLY. NOT FOR USE IN DIAGNOSTIC PROCEDURES"

Our Abpromise to you: Quality guaranteed and expert technical support

- Replacement or refund for products not performing as stated on the datasheet
- Valid for 12 months from date of delivery
- Response to your inquiry within 24 hours
- We provide support in Chinese, English, French, German, Japanese and Spanish
- Extensive multi-media technical resources to help you
- We investigate all quality concerns to ensure our products perform to the highest standards

If the product does not perform as described on this datasheet, we will offer a refund or replacement. For full details of the Abpromise, please visit <https://www.abcam.com/abpromise> or contact our technical team.

Terms and conditions

- Guarantee only valid for products bought direct from Abcam or one of our authorized distributors