

Product datasheet

Anti-DGCR6L antibody ab171394

1 Image

Overview

Product name	Anti-DGCR6L antibody
Description	Rabbit polyclonal to DGCR6L
Host species	Rabbit
Tested applications	Suitable for: WB
Species reactivity	Reacts with: Human
Immunogen	Synthetic peptide within Human DGCR6L aa 107-135 (internal sequence) conjugated to Keyhole Limpet Haemocyanin (KLH). The exact sequence is proprietary. Database link: Q9BY27
Positive control	DGCR6L transiently transfected 293 cell lysates

Properties

Form	Liquid
Storage instructions	Shipped at 4°C. Store at +4°C short term (1-2 weeks). Upon delivery aliquot. Store at -20°C long term. Avoid freeze / thaw cycle.
Storage buffer	Preservative: 0.09% Sodium azide Constituent: 99.91% PBS
Purity	Immunogen affinity purified
Clonality	Polyclonal
Isotype	IgG

Applications

Our [Abpromise guarantee](#) covers the use of **ab171394** in the following tested applications.

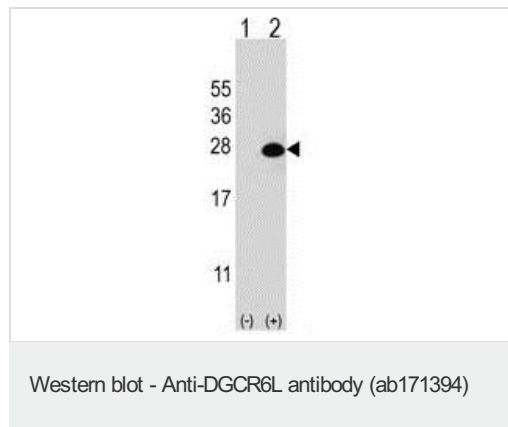
The application notes include recommended starting dilutions; optimal dilutions/concentrations should be determined by the end user.

Application	Abreviews	Notes
WB		1/100 - 1/500. Predicted molecular weight: 25 kDa.

Target

Function	May play a role in neural crest cell migration into the third and fourth pharyngeal pouches.
Tissue specificity	Widely expressed in fetal and adult tissues. Highest expression in liver, heart and skeletal muscle. Lower levels in pancreas and placenta. Weak expression in brain.
Sequence similarities	Belongs to the gonadal family.
Cellular localization	Nucleus. Predominantly nuclear.

Images



All lanes : Anti-DGCR6L antibody (ab171394) at 1/100 dilution

Lane 1 : Non transfected 293 cell lysate

Lane 2 : transiently transfected 293 cell lysate with DGCR6L

Lysates/proteins at 2 µg per lane.

Predicted band size: 25 kDa

Please note: All products are "FOR RESEARCH USE ONLY AND ARE NOT INTENDED FOR DIAGNOSTIC OR THERAPEUTIC USE"

Our Abpromise to you: Quality guaranteed and expert technical support

- Replacement or refund for products not performing as stated on the datasheet
- Valid for 12 months from date of delivery
- Response to your inquiry within 24 hours
- We provide support in Chinese, English, French, German, Japanese and Spanish
- Extensive multi-media technical resources to help you
- We investigate all quality concerns to ensure our products perform to the highest standards

If the product does not perform as described on this datasheet, we will offer a refund or replacement. For full details of the Abpromise, please visit <https://www.abcam.com/abpromise> or contact our technical team.

Terms and conditions

- Guarantee only valid for products bought direct from Abcam or one of our authorized distributors