


Product datasheet

Anti-DIAPH3 antibody ab189373

1 Image

Overview

Product name	Anti-DIAPH3 antibody
Description	Rabbit Polyclonal to DIAPH3
Host species	Rabbit
Specificity	ab189373 is reactive against recombinant protein, detects immunogen.
Tested applications	Suitable for: WB, IHC-P
Species reactivity	Reacts with: Human Predicted to work with: Cow 
Positive control	Human adrenal tissue.

Properties

Form	Liquid
Storage instructions	Shipped at 4°C. Store at +4°C short term (1-2 weeks). Upon delivery aliquot. Store at -20°C long term. Avoid freeze / thaw cycle.
Storage buffer	pH: 7 Preservative: 0.01% Thimerosal (merthiolate) Constituents: 1.79% Tris glycine, 10% Glycerol
Purity	Immunogen affinity purified
Clonality	Polyclonal
Isotype	IgG

Applications

Our [Abpromise guarantee](#) covers the use of **ab189373** in the following tested applications.

The application notes include recommended starting dilutions; optimal dilutions/concentrations should be determined by the end user.

Application	Abreviews	Notes
WB		Use at an assay dependent concentration. Predicted molecular weight: 137 kDa.

Application	Abreviews	Notes
IHC-P		Use a concentration of 10 µg/ml. Perform heat mediated antigen retrieval before commencing with IHC staining protocol.

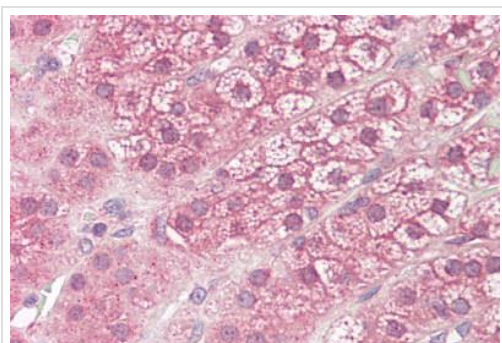
Target

Function Binds to GTP-bound form of Rho and to profilin. Acts in a Rho-dependent manner to recruit profilin to the membrane, where it promotes actin polymerization. It is required for cytokinesis, stress fiber formation, and transcriptional activation of the serum response factor. DFR proteins couple Rho and Src tyrosine kinase during signaling and the regulation of actin dynamics.

Sequence similarities Belongs to the formin homology family. Diaphanous subfamily.
 Contains 1 DAD (diaphanous autoregulatory) domain.
 Contains 1 FH1 (formin homology 1) domain.
 Contains 1 FH2 (formin homology 2) domain.
 Contains 1 GBD/FH3 (Rho GTPase-binding/formin homology 3) domain.

Domain DRFs are regulated by intramolecular GBD-DAD binding where Rho-GTP activates the DRFs by disrupting the GBD-DAD interaction.

Images



Immunohistochemical analysis of formalin-fixed, paraffin-embedded human adrenal tissue, labeling DIAPH3 using ab189373 at 10 µg/ml.

Immunohistochemistry (Formalin/PFA-fixed paraffin-embedded sections) - Anti-DIAPH3 antibody (ab189373)

Please note: All products are "FOR RESEARCH USE ONLY. NOT FOR USE IN DIAGNOSTIC PROCEDURES"

Our Abpromise to you: Quality guaranteed and expert technical support

- Replacement or refund for products not performing as stated on the datasheet
- Valid for 12 months from date of delivery
- Response to your inquiry within 24 hours
- We provide support in Chinese, English, French, German, Japanese and Spanish

- Extensive multi-media technical resources to help you
- We investigate all quality concerns to ensure our products perform to the highest standards

If the product does not perform as described on this datasheet, we will offer a refund or replacement. For full details of the Abpromise, please visit <https://www.abcam.com/abpromise> or contact our technical team.

Terms and conditions

- Guarantee only valid for products bought direct from Abcam or one of our authorized distributors