

Product datasheet

# Anti-Diphtheria Toxin antibody ab151222

1 References 1 Image

Overview

---

<b>Product name</b>	Anti-Diphtheria Toxin antibody
<b>Description</b>	Rabbit polyclonal to Diphtheria Toxin
<b>Host species</b>	Rabbit
<b>Specificity</b>	Reacts with Diphtheria Toxin as well as its CRM197 mutant toxin.
<b>Tested applications</b>	<b>Suitable for:</b> WB, IP, ELISA, Dot blot
<b>Species reactivity</b>	<b>Reacts with:</b> Other species
<b>Immunogen</b>	Purified non-toxic mutant Diphtheria Toxin CRM 197.
<b>General notes</b>	<b>For a recombinant antibody to Diphtheria Toxin, please see - <a href="#">ab209329</a>.</b>

Reproducibility is key to advancing scientific discovery and accelerating scientists' next breakthrough.

Abcam is leading the way with our range of recombinant antibodies, knockout-validated antibodies and knockout cell lines, all of which support improved reproducibility.

We are also planning to innovate the way in which we present recommended applications and species on our product datasheets, so that only applications & species that have been tested in our own labs, our suppliers or by selected trusted collaborators are covered by our Abpromise™ guarantee.

In preparation for this, we have started to update the applications & species that this product is Abpromise guaranteed for.

We are also updating the applications & species that this product has been “predicted to work with,” however this information is not covered by our Abpromise guarantee.

Applications & species from publications and Abreviews that have not been tested in our own labs or in those of our suppliers are not covered by the Abpromise guarantee.

Please check that this product meets your needs before purchasing. If you have any questions, special requirements or concerns, please send us an inquiry and/or contact our Support team ahead of purchase. Recommended alternatives for this product can be found below, as well as customer reviews and Q&As.

Properties

---

<b>Form</b>	Liquid
-------------	--------

<b>Storage instructions</b>	Shipped at 4°C. Upon delivery aliquot. Store at -20°C or -80°C. Avoid freeze / thaw cycle.
<b>Storage buffer</b>	pH: 6 Constituent: 100% Whole serum
<b>Purity</b>	Whole antiserum
<b>Clonality</b>	Polyclonal
<b>Isotype</b>	IgG

## Applications

Our [Abpromise guarantee](#) covers the use of **ab151222** in the following tested applications.

The application notes include recommended starting dilutions; optimal dilutions/concentrations should be determined by the end user.

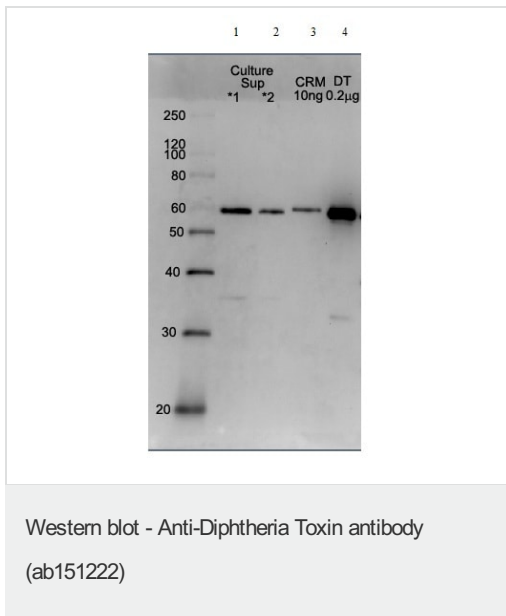
Application	Abreviews	Notes
WB		1/2000. Can detect 1 ng or less of the toxin
IP		1/200 - 1/1000.
ELISA		1/2000 - 1/7000.
Dot blot		1/1000. Can detect 1 ng or less of the toxin

## Target

**Relevance** Corynebacterium diphtheriae is a gram-positive, nonmotile bacteria found in soil and animal feces. C. diphtheriae infect the epithelial cells of the upper respiratory tract from where they produce and secrete a potent toxin. This toxin is absorbed and disseminated through lymph channels and blood to the susceptible tissues of the body.

**Cellular localization** Secreted

## Images



**All lanes :** Anti-Diphtheria Toxin antibody (ab151222) at 1/2000 dilution

**Lane 1 :** Crude culture medium of Corynebacterium Diphtheria.

**Lane 2 :** The two-fold diluted culture medium.

**Lane 3 :** Purified CRM197 (10ng)

**Lane 4 :** Purified Diphtheria toxin (200ng)

**Please note:** All products are "FOR RESEARCH USE ONLY. NOT FOR USE IN DIAGNOSTIC PROCEDURES"

### Our Abpromise to you: Quality guaranteed and expert technical support

- Replacement or refund for products not performing as stated on the datasheet
- Valid for 12 months from date of delivery
- Response to your inquiry within 24 hours
- We provide support in Chinese, English, French, German, Japanese and Spanish
- Extensive multi-media technical resources to help you
- We investigate all quality concerns to ensure our products perform to the highest standards

If the product does not perform as described on this datasheet, we will offer a refund or replacement. For full details of the Abpromise, please visit <https://www.abcam.com/abpromise> or contact our technical team.

### Terms and conditions

- Guarantee only valid for products bought direct from Abcam or one of our authorized distributors