

Product datasheet

Anti-DIS3L2 antibody [6C7B2] ab181743

6 Images

Overview

<b>Product name</b>	Anti-DIS3L2 antibody [6C7B2]
<b>Description</b>	Mouse monoclonal [6C7B2] to DIS3L2
<b>Host species</b>	Mouse
<b>Tested applications</b>	<b>Suitable for:</b> Flow Cyt, IHC-P, WB
<b>Species reactivity</b>	<b>Reacts with:</b> Human
<b>Immunogen</b>	Recombinant fragment corresponding to Human DIS3L2 aa 27-250. Expressed in E. Coli.

Sequence:

```
DIGASPGDKKSKNRSTRGKKKSFETYMSKEDVSEGL
KRGTLIQGVLRIN
PKKFHEAFIPSPDGDRDIFIDGVVARNRALNGDLVVVK
LLPEEHWKVVKP
ESNDKETEAAYESDIPEELCGHHLPQQSLKSYNDSPD
VIVEAQFDGSDSE
DGHGITQNVLVDGVKKLSVCVSEKGREDDGAPVTKD
ETTCISQDTRALSE KSLQRSKVVYILEKKHSRAATGF
```

Database link: [Q8IYB7](#)

 [Run BLAST with](#)

 [Run BLAST with](#)

<b>Positive control</b>	HeLa and HepG2 cell lysates; DIS3L2 recombinant protein; DIS3L2 (aa 27-250)-hlgGfc transfected HEK293 cell lysate; Jurkat cells; Human endometrial cancer and Human bladder cancer tissues.
-------------------------	---

Properties

<b>Form</b>	Liquid
<b>Storage instructions</b>	Shipped at 4°C. Store at +4°C short term (1-2 weeks). Upon delivery aliquot. Store at -20°C long term. Avoid freeze / thaw cycle.
<b>Storage buffer</b>	Preservative: 0.05% Sodium azide Constituent: 99% PBS
<b>Purity</b>	0.5% protein stabilizer Protein G purified

<b>Purification notes</b>	Purified from tissue culture supernatant.
<b>Clonality</b>	Monoclonal
<b>Clone number</b>	6C7B2
<b>Isotype</b>	IgG1

## Applications

Our [Abpromise guarantee](#) covers the use of **ab181743** in the following tested applications.

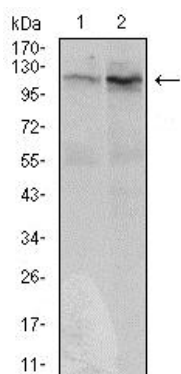
The application notes include recommended starting dilutions; optimal dilutions/concentrations should be determined by the end user.

Application	Abreviews	Notes
Flow Cyt		1/200 - 1/400. <a href="#">ab170190</a> - Mouse monoclonal IgG1, is suitable for use as an isotype control with this antibody.
IHC-P		1/200 - 1/1000.
WB		1/500 - 1/2000. Predicted molecular weight: 99 kDa.

## Target

<b>Function</b>	Ribonuclease that plays a critical role in RNA metabolism. It is essential for correct mitosis, and negatively regulates cell proliferation.
<b>Involvement in disease</b>	Defects in DIS3L2 are the cause of Perlman syndrome (PRLMNS) [MIM:267000]. An autosomal recessive congenital overgrowth syndrome. Affected children are large at birth, are hypotonic, and show organomegaly, characteristic facial dysmorphisms (inverted V-shaped upper lip, prominent forehead, deep-set eyes, broad and flat nasal bridge, and low-set ears), renal anomalies (nephromegaly and hydronephrosis), frequent neurodevelopmental delay, and high neonatal mortality. Perlman syndrome is associated with a high risk of Wilms tumor. Histologic examination of the kidneys in affected children shows frequent nephroblastomatosis, which is a precursor lesion for Wilms tumor.
<b>Sequence similarities</b>	Belongs to the RNR ribonuclease family.
<b>Cellular localization</b>	Cytoplasm.

## Images



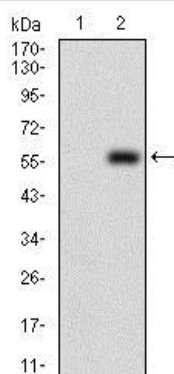
Western blot - Anti-DIS3L2 antibody [6C7B2]  
(ab181743)

**All lanes** : Anti-DIS3L2 antibody [6C7B2] (ab181743) at 1/500 dilution

**Lane 1** : HeLa cell lysate

**Lane 2** : HepG2 cell lysate

**Predicted band size:** 99 kDa



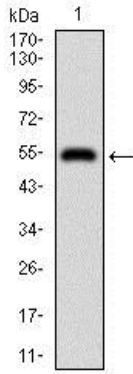
Western blot - Anti-DIS3L2 antibody [6C7B2]  
(ab181743)

**All lanes** : Anti-DIS3L2 antibody [6C7B2] (ab181743) at 1/500 dilution

**Lane 1** : non-transfected HEK293 cell lysate

**Lane 2** : DIS3L2 (aa 27-250)-hlgGFc transfected HEK293 cell lysate

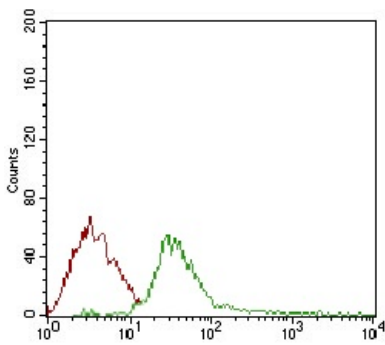
**Predicted band size:** 99 kDa



Western blot - Anti-DIS3L2 antibody [6C7B2]  
(ab181743)

Anti-DIS3L2 antibody [6C7B2] (ab181743) at 1/500 dilution +  
DIS3L2 recombinant protein

**Predicted band size:** 99 kDa

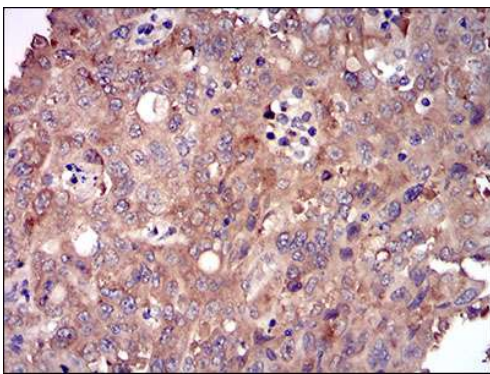


Flow Cytometry - Anti-DIS3L2 antibody [6C7B2]  
(ab181743)

Flow Cytometrical analysis of Jurkat cells labeling DIS3L2 with  
ab181743 at 1/200 (green) compared to a negative control  
antibody (red).

Immunohistochemistry (Formalin/PFA-fixed paraffin-  
embedded sections) - Anti-DIS3L2 antibody [6C7B2]  
(ab181743)

Immunohistochemical analysis of paraffin embedded Human  
bladder cancer tissue labeling DIS3L2 with ab181743 at 1/200.



Immunohistochemistry (Formalin/PFA-fixed paraffin-  
embedded sections) - Anti-DIS3L2 antibody [6C7B2]  
(ab181743)

Immunohistochemical analysis of paraffin embedded  
Human endometrial cancer tissue labeling DIS3L2 with ab181743  
at 1/200.

**Please note:** All products are "FOR RESEARCH USE ONLY. NOT FOR USE IN DIAGNOSTIC PROCEDURES"

### **Our Abpromise to you: Quality guaranteed and expert technical support**

---

- Replacement or refund for products not performing as stated on the datasheet
- Valid for 12 months from date of delivery
- Response to your inquiry within 24 hours
  
- We provide support in Chinese, English, French, German, Japanese and Spanish
- Extensive multi-media technical resources to help you
- We investigate all quality concerns to ensure our products perform to the highest standards

If the product does not perform as described on this datasheet, we will offer a refund or replacement. For full details of the Abpromise, please visit <https://www.abcam.com/abpromise> or contact our technical team.

### **Terms and conditions**

---

- Guarantee only valid for products bought direct from Abcam or one of our authorized distributors