

Product datasheet

Anti-Dkk3 antibody ab2459

★★★★★ 3 Abreviews 5 References 2 Images

Overview

Product name	Anti-Dkk3 antibody
Description	Goat polyclonal to Dkk3
Host species	Goat
Specificity	This antibody is expected to recognise the 350 aa isoform only.
Tested applications	Suitable for: WB, ICC/IF, IHC-P
Species reactivity	Reacts with: Human
Immunogen	Synthetic peptide: AAAALLGEEI , corresponding to C terminal amino acids 340-350 of 350 aa isoform DKK3. Run BLAST with Run BLAST with
Positive control	293 lysate.

Properties

Form	Liquid
Storage instructions	Shipped at 4°C. Upon delivery aliquot and store at -20°C or -80°C. Avoid repeated freeze / thaw cycles.
Storage buffer	Preservative: 0.02% Sodium Azide Constituents: 0.5% BSA, Tris buffered saline, pH 7.3
Purity	Immunogen affinity purified
Purification notes	Purified from goat serum by ammonium sulphate precipitation followed by antigen affinity chromatography using the immunizing peptide.
Clonality	Polyclonal
Isotype	IgG

Applications

Our [Abpromise guarantee](#) covers the use of **ab2459** in the following tested applications.

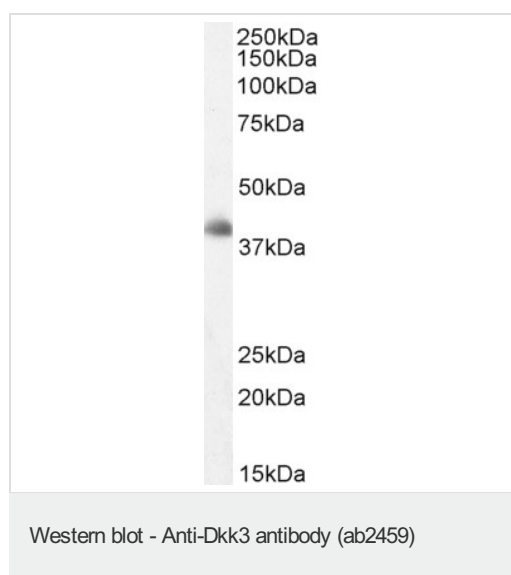
The application notes include recommended starting dilutions; optimal dilutions/concentrations should be determined by the end user.

Application	Abreviews	Notes
WB	★★★★★	Use a concentration of 0.03 - 0.1 µg/ml.
ICC/IF		Use at an assay dependent concentration. PubMed: 25029272
IHC-P	★★★★★	Use at an assay dependent concentration. Perform heat mediated antigen retrieval before commencing with IHC staining protocol.

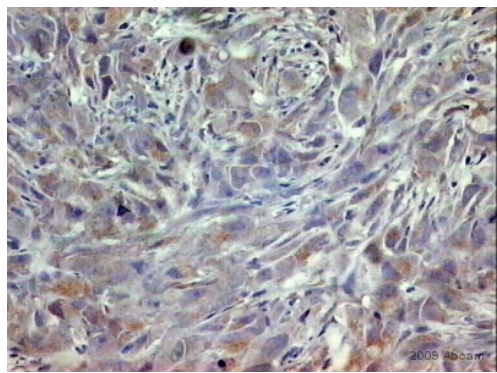
Target

Function	Antagonizes canonical Wnt signaling by inhibiting LRP5/6 interaction with Wnt and by forming a ternary complex with the transmembrane protein KREMEN that promotes internalization of LRP5/6. DKKs play an important role in vertebrate development, where they locally inhibit Wnt regulated processes such as antero-posterior axial patterning, limb development, somitogenesis and eye formation. In the adult, Dkks are implicated in bone formation and bone disease, cancer and Alzheimer disease.
Tissue specificity	Highest expression in heart, brain, and spinal cord.
Sequence similarities	Belongs to the dickkopf family.
Domain	The C-terminal cysteine-rich domain mediates interaction with LRP5 and LRP6.
Post-translational modifications	N- and O-glycosylated.
Cellular localization	Secreted.

Images



Anti-Dkk3 antibody (ab2459) at 2 µg/ml + Human Cerebellum lysate at 35 µg



Immunohistochemistry (Formalin/PFA-fixed paraffin-embedded sections) - Anti-Dkk3 antibody (ab2459)
This image is courtesy of an anonymous Abreview

ab2459 staining DKK3 in human MDA-MB 436 cells by immunohistochemistry (formalin/PFA-fixed paraffin-embedded sections). Cells were paraformaldehyde fixed prior to blocking in 10% casein for 30 minutes at 22°C. The primary antibody was diluted 1/75 and incubated with the sample for 30 minutes at 22°C. A biotin conjugated rabbit polyclonal to goat Ig, diluted 1/200, was used as the secondary.

Please note: All products are "FOR RESEARCH USE ONLY AND ARE NOT INTENDED FOR DIAGNOSTIC OR THERAPEUTIC USE"

Our Abpromise to you: Quality guaranteed and expert technical support

- Replacement or refund for products not performing as stated on the datasheet
- Valid for 12 months from date of delivery
- Response to your inquiry within 24 hours

- We provide support in Chinese, English, French, German, Japanese and Spanish
- Extensive multi-media technical resources to help you
- We investigate all quality concerns to ensure our products perform to the highest standards

If the product does not perform as described on this datasheet, we will offer a refund or replacement. For full details of the Abpromise, please visit <https://www.abcam.com/abpromise> or contact our technical team.

Terms and conditions

- Guarantee only valid for products bought direct from Abcam or one of our authorized distributors