




## Product datasheet

# Anti-Dlx1 antibody [OT1E6] ab236381

★★★★☆ 1 Abreviews 3 Images

### Overview

<b>Product name</b>	Anti-Dlx1 antibody [OT1E6]
<b>Description</b>	Mouse monoclonal [OT1E6] to Dlx1
<b>Host species</b>	Mouse
<b>Tested applications</b>	<b>Suitable for:</b> WB, IHC-P
<b>Species reactivity</b>	<b>Reacts with:</b> Human <b>Predicted to work with:</b> Mouse 
<b>Immunogen</b>	Recombinant full length protein corresponding to Human Dlx1 aa 1-255. (NP_835221) produced in E.coli. Sequence: MTMTMPESLNSPVSGKAVFMEFGPPNQQMSPSPM SHGHYSMHCLHSAGH SQPDGAYSSASSFSRPLGYPVNSVSSHASSPYISSV QSYPGSASLAQSR LEDPGADSEKSTVVEGGEVRFNGKGKKIRKPRTIYSSL QLQALNRRFQQT QYLALPERAELAASLGLTQTQVKIWFQNKRSKFKKLM KQGGAALEGSALA NGRALSAGSPPVPPGWNPNSSSGKGSNGNAGSYIPS YTSWYPSAHQEAMQ QPQLM  Database link: <a href="#">P56177-1</a>   <a href="#">Run BLAST with</a>  <a href="#">Run BLAST with</a>
<b>Positive control</b>	IHC-P: Human adult brain and embryonic cerebellum tissue. WB: pCMV6-ENTRY Dlx1 cDNA transfected HEK-293T cell lysate.

### Properties

<b>Form</b>	Liquid
<b>Storage instructions</b>	Shipped at 4°C. Store at +4°C short term (1-2 weeks). Upon delivery aliquot. Store at -20°C long term. Avoid freeze / thaw cycle.
<b>Storage buffer</b>	pH: 7.3 Preservative: 0.02% Sodium azide

	Constituents: PBS, 1% BSA, 50% Glycerol
<b>Purity</b>	Affinity purified
<b>Purification notes</b>	Purified from cell culture supernatant.
<b>Clonality</b>	Monoclonal
<b>Clone number</b>	OT11E6
<b>Isotype</b>	IgG2b

## Applications

Our [Abpromise guarantee](#) covers the use of **ab236381** in the following tested applications.

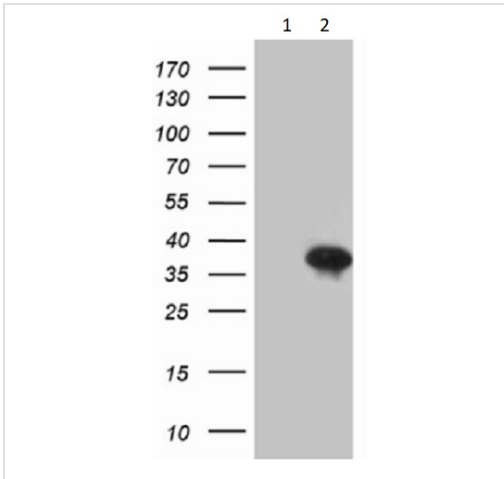
The application notes include recommended starting dilutions; optimal dilutions/concentrations should be determined by the end user.

Application	Abreviews	Notes
WB		1/2000. Predicted molecular weight: 27 kDa.
IHC-P		1/500. Heat-induced epitope retrieval by 1 mM EDTA in 10 mM Tris buffer (pH 8.5) at 120°C for 3 minutes.

## Target

<b>Function</b>	Likely to play a regulatory role in the development of the ventral forebrain. May play a role in craniofacial patterning and morphogenesis and may be involved in the early development of diencephalic subdivisions.
<b>Sequence similarities</b>	Belongs to the distal-less homeobox family. Contains 1 homeobox DNA-binding domain.
<b>Cellular localization</b>	Nucleus.

## Images



Western blot - Anti-Dlx1 antibody [OT11E6]  
(ab236381)

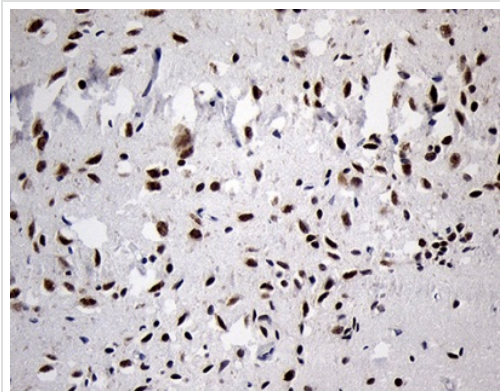
**All lanes :** Anti-Dlx1 antibody [OT11E6] (ab236381) at 1/2000 dilution

**Lane 1 :** pCMV6-ENTRY control cDNA transfected HEK-293T (Human epithelial cell line from embryonic kidney transformed with large T antigen) cell lysate

**Lane 2 :** pCMV6-ENTRY Dlx1 cDNA transfected HEK-293T (Human epithelial cell line from embryonic kidney transformed with large T antigen) cell lysate

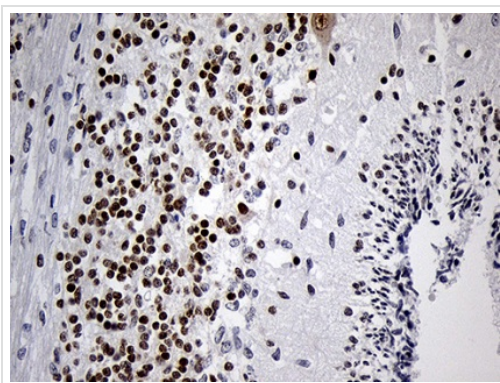
Lysates/proteins at 5 µg per lane.

**Predicted band size:** 27 kDa



Immunohistochemistry (Formalin/PFA-fixed paraffin-embedded sections) - Anti-Dlx1 antibody [OT11E6]  
(ab236381)

Paraffin-embedded human adult brain tissue stained for Dlx1 with ab236381 at a 1/500 dilution in immunohistochemical analysis.



Immunohistochemistry (Formalin/PFA-fixed paraffin-embedded sections) - Anti-Dlx1 antibody [OT11E6]  
(ab236381)

Paraffin-embedded human embryonic cerebellum tissue stained for Dlx1 with ab236381 at a 1/500 dilution in immunohistochemical analysis.

## **Our Abpromise to you: Quality guaranteed and expert technical support**

---

- Replacement or refund for products not performing as stated on the datasheet
- Valid for 12 months from date of delivery
- Response to your inquiry within 24 hours
  
- We provide support in Chinese, English, French, German, Japanese and Spanish
- Extensive multi-media technical resources to help you
- We investigate all quality concerns to ensure our products perform to the highest standards

If the product does not perform as described on this datasheet, we will offer a refund or replacement. For full details of the Abpromise, please visit <https://www.abcam.com/abpromise> or contact our technical team.

## **Terms and conditions**

---

- Guarantee only valid for products bought direct from Abcam or one of our authorized distributors