

Product datasheet

Anti-DMRT1 antibody [EPR6936] ab126741

Recombinant RabMAb

1 Image

Overview

Product name	Anti-DMRT1 antibody [EPR6936]
Description	Rabbit monoclonal [EPR6936] to DMRT1
Host species	Rabbit
Tested applications	Suitable for: WB, IP Unsuitable for: Flow Cyt, ICC or IHC-P
Species reactivity	Reacts with: Human
Immunogen	Synthetic peptide corresponding to amino acid residues near the N-terminus of Human DMRT1. (Q9Y5R6)
Positive control	Human testis, HL-60 and Human seminoma lysates.
General notes	Our RabMAb [®] technology is a patented hybridoma-based technology for making rabbit monoclonal antibodies. For details on our patents, please refer to RabMab[®] patents . This product is a recombinant rabbit monoclonal antibody .

Properties

Form	Liquid
Storage instructions	Shipped at 4°C. Store at -20°C. Stable for 12 months at -20°C.
Storage buffer	pH: 7.20 Preservative: 0.01% Sodium azide Constituents: 9% PBS, 40% Glycerol, 0.05% BSA, 50% Tissue culture supernatant
Purity	Tissue culture supernatant
Clonality	Monoclonal
Clone number	EPR6936
Isotype	IgG

Applications

Our [Abpromise guarantee](#) covers the use of **ab126741** in the following tested applications.

The application notes include recommended starting dilutions; optimal dilutions/concentrations should be determined by the end user.

Application	Abreviews	Notes
WB		1/1000 - 1/10000. Detects a band of approximately 34 kDa (predicted molecular weight: 39 kDa).
IP		1/100 - 1/500.

Application notes Is unsuitable for Flow Cyt, ICC or IHC-P.

Target

Function May be required for testis development.

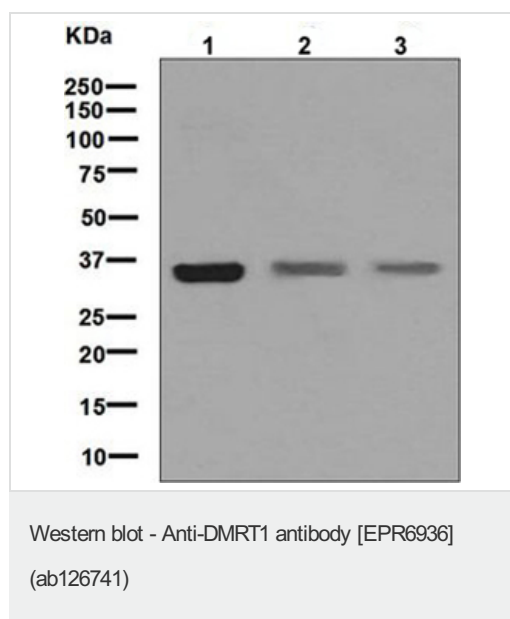
Tissue specificity Testis specific.

Sequence similarities Belongs to the DMRT family.
Contains 1 DM DNA-binding domain.

Developmental stage Expressed in the genital ridges of six-week-old male embryos. Becomes confined to the forming seminiferous tubules (possibly Sertoli cells) at seven weeks. Not detected in female embryos.

Cellular localization Nucleus.

Images



All lanes : Anti-DMRT1 antibody [EPR6936] (ab126741) at 1/1000 dilution

Lane 1 : Human testis lysate

Lane 2 : HL-60 lysate

Lane 3 : Human seminoma lysate

Lysates/proteins at 10 µg per lane.

Secondary

All lanes : Goat-anti-rabbit HRP at 1/2000 dilution

Developed using the ECL technique.

Predicted band size: 39 kDa

Observed band size: 34 kDa

[why is the actual band size different from the predicted?](#)

Please note: All products are "FOR RESEARCH USE ONLY. NOT FOR USE IN DIAGNOSTIC PROCEDURES"

Our Abpromise to you: Quality guaranteed and expert technical support

- Replacement or refund for products not performing as stated on the datasheet
- Valid for 12 months from date of delivery
- Response to your inquiry within 24 hours

- We provide support in Chinese, English, French, German, Japanese and Spanish
- Extensive multi-media technical resources to help you
- We investigate all quality concerns to ensure our products perform to the highest standards

If the product does not perform as described on this datasheet, we will offer a refund or replacement. For full details of the Abpromise, please visit <https://www.abcam.com/abpromise> or contact our technical team.

Terms and conditions

- Guarantee only valid for products bought direct from Abcam or one of our authorized distributors