

Product datasheet

Anti-DNA Gyrase A antibody ab75594

2 References 1 Image

Overview

Product name	Anti-DNA Gyrase A antibody
Description	Rabbit polyclonal to DNA Gyrase A
Host species	Rabbit
Tested applications	Suitable for: WB
Species reactivity	Reacts with: Escherichia coli, Staphylococcus aureus
Immunogen	Purified <i>E. coli</i> DNA Gyrase A protein (over expressed from <i>E. coli</i>)
Positive control	<i>E.coli</i> cell lysate
General notes	<p>Reproducibility is key to advancing scientific discovery and accelerating scientists' next breakthrough.</p> <p>Abcam is leading the way with our range of recombinant antibodies, knockout-validated antibodies and knockout cell lines, all of which support improved reproducibility.</p> <p>We are also planning to innovate the way in which we present recommended applications and species on our product datasheets, so that only applications & species that have been tested in our own labs, our suppliers or by selected trusted collaborators are covered by our Abpromise™ guarantee.</p> <p>In preparation for this, we have started to update the applications & species that this product is Abpromise guaranteed for.</p> <p>We are also updating the applications & species that this product has been “predicted to work with,” however this information is not covered by our Abpromise guarantee.</p> <p>Applications & species from publications and Abreviews that have not been tested in our own labs or in those of our suppliers are not covered by the Abpromise guarantee.</p> <p>Please check that this product meets your needs before purchasing. If you have any questions, special requirements or concerns, please send us an inquiry and/or contact our Support team ahead of purchase. Recommended alternatives for this product can be found below, as well as customer reviews and Q&As.</p>

Properties

Form	Liquid
Storage instructions	Shipped at 4°C. Upon delivery aliquot and store at -20°C. Avoid freeze / thaw cycles.

Storage buffer	pH: 7.20 Preservative: 0.01% Sodium azide Constituent: PBS
Purity	Protein A purified
Purification notes	The antibody is isolated from rabbit blood and further purified on a Protein A column using the low salt method.
Clonality	Polyclonal
Isotype	IgG

Applications

Our [Abpromise guarantee](#) covers the use of **ab75594** in the following tested applications.

The application notes include recommended starting dilutions; optimal dilutions/concentrations should be determined by the end user.

Application	Abreviews	Notes
-------------	-----------	-------

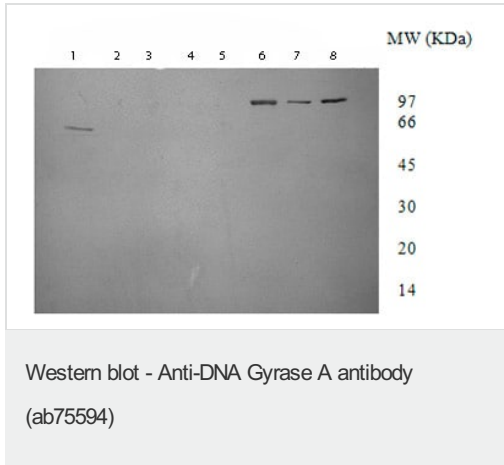
WB

Application notes	WB: 1/1000. Can be used in Western Blots to detect purified over expressed Gyrase A and unexpressed gyrase in cell extracts. The antibody is diluted 1/1000 for detection of purified proteins and 1/200 for cell extracts. Not yet tested in other applications. Optimal dilutions/concentrations should be determined by the end user.
--------------------------	--

Target

Relevance	DNA Gyrase A belongs to the topoisomerase gyrA/parC subunit family. DNA gyrase negatively supercoils closed circular double stranded DNA in an ATP dependent manner and also catalyzes the interconversion of other topological isomers of double stranded DNA rings, including catenanes and knotted rings. It is made up of two chains. The A chain is responsible for DNA breakage and rejoining; the B chain catalyzes ATP hydrolysis. The enzyme forms an A2B2 tetramer. When the enzyme transiently cleaves DNA a phosphotyrosine bond is formed between the gyrA and DNA.
------------------	--

Images



All lanes : Anti-DNA Gyrase A antibody (ab75594) at 1/1000 dilution

Lane 1 : *E coli* cell lysate (Gyrase A, A59 domain) at 0.1 µg

Lane 2 : *E coli* cell lysate (Gyrase B, B43 domain) at 0.1 µg

Lane 3 : *E coli* cell lysate (Gyrase B, whole protein) at 1 µg

Lane 4 : *E coli* cell lysate (Gyrase B, whole protein) at 0.5 µg

Lane 5 : *E coli* cell lysate (Gyrase B, whole protein) at 0.1 µg

Lane 6 : *E coli* cell lysate (Gyrase A, whole protein) at 1 µg

Lane 7 : *E coli* cell lysate (Gyrase A, whole protein) at 0.5 µg

Lane 8 : *E coli* cell lysate (Gyrase A, whole protein) at 0.1 µg

Secondary

All lanes : goat anti rabbit Igs at 1/5000 dilution

Observed band size: 97 kDa

[why is the actual band size different from the predicted?](#)

Please note: All products are "FOR RESEARCH USE ONLY. NOT FOR USE IN DIAGNOSTIC PROCEDURES"

Our Abpromise to you: Quality guaranteed and expert technical support

- Replacement or refund for products not performing as stated on the datasheet
- Valid for 12 months from date of delivery
- Response to your inquiry within 24 hours
- We provide support in Chinese, English, French, German, Japanese and Spanish
- Extensive multi-media technical resources to help you
- We investigate all quality concerns to ensure our products perform to the highest standards

If the product does not perform as described on this datasheet, we will offer a refund or replacement. For full details of the Abpromise, please visit <https://www.abcam.com/abpromise> or contact our technical team.

Terms and conditions

- Guarantee only valid for products bought direct from Abcam or one of our authorized distributors