


Product datasheet

Anti-DNA Ligase III/LIG3 antibody ab224820

2 Images

Overview

Product name	Anti-DNA Ligase III/LIG3 antibody
Description	Rabbit polyclonal to DNA Ligase III/LIG3
Host species	Rabbit
Tested applications	Suitable for: IP, WB
Species reactivity	Reacts with: Human Predicted to work with: Chimpanzee, Gorilla 
Immunogen	Synthetic peptide within Human DNA Ligase III/LIG3 aa 800-850. The exact sequence is proprietary. (CAA59230.1). Database link: P49916-3
Positive control	WB: HeLa whole cell lysate. IP: HeLa whole cell lysate.
General notes	This product was previously labelled as DNA Ligase III

Properties

Form	Liquid
Storage instructions	Shipped at 4°C. Store at +4°C short term (1-2 weeks). Upon delivery aliquot. Store at -20°C long term. Avoid freeze / thaw cycle.
Storage buffer	Preservative: 0.09% Sodium azide Constituents: 0.1% BSA, Tris buffered saline
Purity	Immunogen affinity purified
Purification notes	ab224820 was affinity purified using an epitope specific to DNA Ligase III/LIG3 immobilized on solid support.
Clonality	Polyclonal
Isotype	IgG

Applications

Our [Abpromise guarantee](#) covers the use of **ab224820** in the following tested applications.

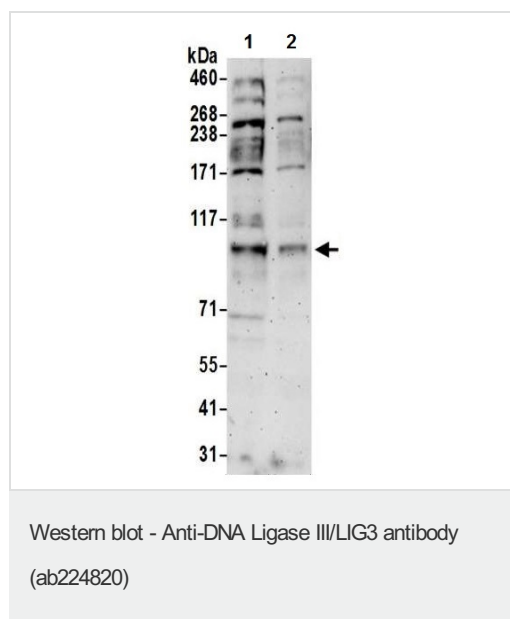
The application notes include recommended starting dilutions; optimal dilutions/concentrations should be determined by the end user.

Application	Abreviews	Notes
IP		Use at 2-10 µg/mg of lysate.
WB		1/2000 - 1/10000. Predicted molecular weight: 103 kDa.

Target

Function	Interacts with DNA-repair protein XRCC1 and can correct defective DNA strand-break repair and sister chromatid exchange following treatment with ionizing radiation and alkylating agents.
Tissue specificity	Testis, thymus, prostate and heart.
Sequence similarities	Belongs to the ATP-dependent DNA ligase family. Contains 1 BRCT domain. Contains 1 PARP-type zinc finger.
Cellular localization	Nucleus.

Images



All lanes : Anti-DNA Ligase III/LIG3 antibody (ab224820) at 0.1 µg/ml

Lane 1 : HeLa (human epithelial cell line from cervix adenocarcinoma) whole cell lysate at 50 µg

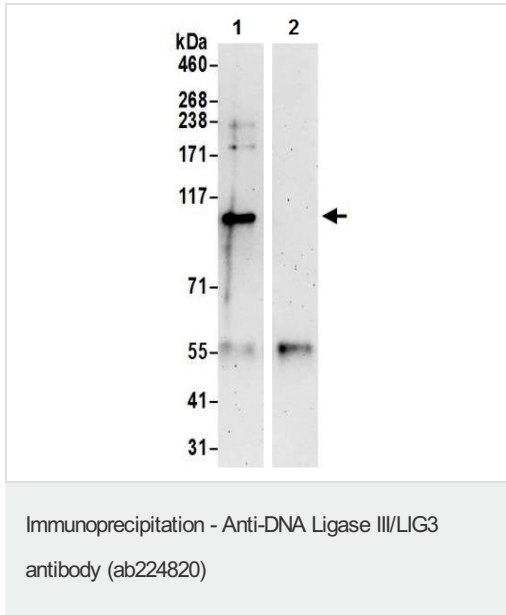
Lane 2 : HeLa (human epithelial cell line from cervix adenocarcinoma) whole cell lysate at 15 µg

Developed using the ECL technique.

Predicted band size: 103 kDa

Exposure time: 3 minutes

Lysates prepared using NETN lysis buffer.



DNA Ligase III/LIG3 was immunoprecipitated from HeLa (human epithelial cell line from cervix adenocarcinoma) whole cell lysate (prepared using NETN lysis buffer) with ab224820 at 6 µg/mg lysate. Western blot was performed from the immunoprecipitate using ab224820 at 1 µg/ml.

Lane 1: ab224820 IP in HeLa whole cell lysate.

Lane 2: Control IgG IP in HeLa whole cell lysate.

Detection: Chemiluminescence with exposure time of 3 minutes.

Please note: All products are "FOR RESEARCH USE ONLY. NOT FOR USE IN DIAGNOSTIC PROCEDURES"

Our Abpromise to you: Quality guaranteed and expert technical support

- Replacement or refund for products not performing as stated on the datasheet
- Valid for 12 months from date of delivery
- Response to your inquiry within 24 hours
- We provide support in Chinese, English, French, German, Japanese and Spanish
- Extensive multi-media technical resources to help you
- We investigate all quality concerns to ensure our products perform to the highest standards

If the product does not perform as described on this datasheet, we will offer a refund or replacement. For full details of the Abpromise, please visit <https://www.abcam.com/abpromise> or contact our technical team.

Terms and conditions

- Guarantee only valid for products bought direct from Abcam or one of our authorized distributors