


Product datasheet

Anti-DNA mismatch repair protein MutL antibody ab225917

1 Image

Overview

Product name	Anti-DNA mismatch repair protein MutL antibody
Description	Rabbit polyclonal to DNA mismatch repair protein MutL
Host species	Rabbit
Tested applications	Suitable for: WB
Species reactivity	Reacts with: Recombinant fragment Predicted to work with: Escherichia coli 
Immunogen	Recombinant full length protein corresponding to Escherichia coli DNA mismatch repair protein MutL aa 1-615. Sequence: MPIQVLPPQLANQIAAGEVVERPASVVKELVENS LDAGAT RIDIDI ERGG AKLIRIRDNGCGIKKDELALALARHATSKIASLDDLEAIISLG FRGEALA SISSVSRLTLTSRTAEQQEAWQAYAEGRDMNVTVKPAAH PVGTTLEVLDL FYNTPARRKFLRTEKTEFNHIDEIIRRIALARFDVTINLSHNG KIVRQYR AVPEGGQKERRLGAICGTAFLEQALAI EWQHGD LTLRGW VADPNHTTPAL AEIQYCYVNGRMMRDRLINHAI RQACEDKLGADQQPAFVL YLEIDPHQVD VNVHPAKHEVRFHQSRLVHDFIYQGVLSVLQQQLETP LPL DDEPQPAPRS IPENRVAAGR NHFAEPAAREPVAPRYTPAPASGSRPAAP WPNAQPGYQKQ QGEVYRQLLQTPAPMQKLKAPEPQEPALAANSQS FGRVL TMHSDCALLE RDGNISLLSLPVAERWLRQAQLTPGEAPVCAQPLLIPLRL KVSAAEEKSAL EKAQSALAE LGIDFQSDAQHV TIRAVPLPLRQQNLQILPELI GYLAKQS VFEPGNAQWIARNLMSEHAQWSMAQAITLLADVERLCPQ LVKTPPGLL QSVDLHPAIKALKDE

Database link: [P23367](#)

 [Run BLAST with](#)

 [Run BLAST with](#)

Positive control

WB: Recombinant Escherichia coli DNA mismatch repair protein MutL protein.

General notes

Reproducibility is key to advancing scientific discovery and accelerating scientists' next breakthrough.

Abcam is leading the way with our range of recombinant antibodies, knockout-validated antibodies and knockout cell lines, all of which support improved reproducibility.

We are also planning to innovate the way in which we present recommended applications and species on our product datasheets, so that only applications & species that have been tested in our own labs, our suppliers or by selected trusted collaborators are covered by our Abpromise™ guarantee.

In preparation for this, we have started to update the applications & species that this product is Abpromise guaranteed for.

We are also updating the applications & species that this product has been “predicted to work with,” however this information is not covered by our Abpromise guarantee.

Applications & species from publications and Abreviews that have not been tested in our own labs or in those of our suppliers are not covered by the Abpromise guarantee.

Please check that this product meets your needs before purchasing. If you have any questions, special requirements or concerns, please send us an inquiry and/or contact our Support team ahead of purchase. Recommended alternatives for this product can be found below, as well as customer reviews and Q&As.

Properties

Form	Liquid
Storage instructions	Shipped at 4°C. Store at +4°C short term (1-2 weeks). Upon delivery aliquot. Store at -20°C long term. Avoid freeze / thaw cycle.
Storage buffer	pH: 7.40 Constituents: 50% Glycerol (glycerin, glycerine), PBS, 0.03% Proclin 300
Purity	Protein G purified
Purification notes	Purity >95%.
Clonality	Polyclonal
Isotype	IgG

Applications

Our [Abpromise guarantee](#) covers the use of **ab225917** in the following tested applications.

The application notes include recommended starting dilutions; optimal dilutions/concentrations should be determined by the end user.

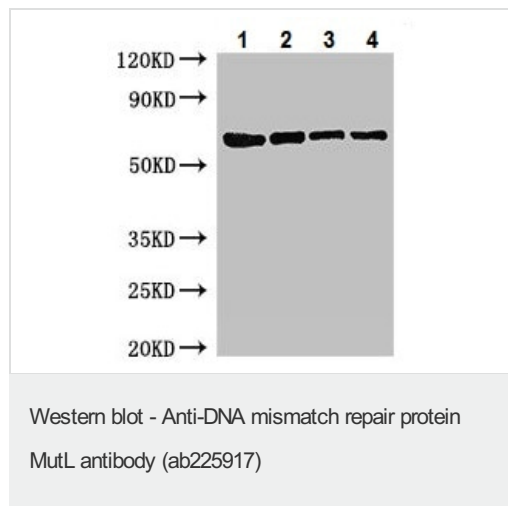
Application	Abreviews	Notes
WB		1/500 - 1/5000. Detects a band of approximately 68 kDa (predicted molecular weight: 68 kDa).

Target

Relevance

This protein is involved in the repair of mismatches in DNA. It is required for dam-dependent methyl-directed DNA mismatch repair. May act as a "molecular matchmaker", a protein that promotes the formation of a stable complex between two or more DNA-binding proteins in an ATP-dependent manner without itself being part of the final effector complex. The ATPase activity of MutL is stimulated by DNA.

Images



All lanes : Anti-DNA mismatch repair protein MutL antibody (ab225917) at 1/500 dilution

Lane 1 : Recombinant Escherichia coli DNA mismatch repair protein MutL protein at 0.2 µg

Lane 2 : Recombinant Escherichia coli DNA mismatch repair protein MutL protein at 0.1 µg

Lane 3 : Recombinant Escherichia coli DNA mismatch repair protein MutL protein at 0.05 µg

Lane 4 : Recombinant Escherichia coli DNA mismatch repair protein MutL protein at 0.025 µg

Secondary

All lanes : Goat polyclonal to rabbit IgG at 1/50000 dilution

Predicted band size: 68 kDa

Observed band size: 68 kDa

Please note: All products are "FOR RESEARCH USE ONLY. NOT FOR USE IN DIAGNOSTIC PROCEDURES"

Our Abpromise to you: Quality guaranteed and expert technical support

- Replacement or refund for products not performing as stated on the datasheet
- Valid for 12 months from date of delivery
- Response to your inquiry within 24 hours
- We provide support in Chinese, English, French, German, Japanese and Spanish
- Extensive multi-media technical resources to help you
- We investigate all quality concerns to ensure our products perform to the highest standards

If the product does not perform as described on this datasheet, we will offer a refund or replacement. For full details of the Abpromise, please visit <https://www.abcam.com/abpromise> or contact our technical team.

Terms and conditions

-
- Guarantee only valid for products bought direct from Abcam or one of our authorized distributors