

Product datasheet

Anti-DNA PKcs antibody [18-2] ab44815

KO VALIDATED

★★★★☆ 3 Abreviews 1 References 2 Images

Overview

Product name	Anti-DNA PKcs antibody [18-2]
Description	Mouse monoclonal [18-2] to DNA PKcs
Host species	Mouse
Tested applications	Suitable for: ICC/IF, WB
Species reactivity	Reacts with: Rat, Human
Immunogen	Other Immunogen Type corresponding to Human DNA PKcs aa 1-2713. Immunogen is purified from HeLa cells. Database link: P78527
Epitope	amino acids 1-2713
Positive control	WB: Wildtype HAP1, SHSY5Y and K562 cell lysates. ICC/IF: Wildtype HAP1 cells.
General notes	<p>Reproducibility is key to advancing scientific discovery and accelerating scientists' next breakthrough.</p> <p>Abcam is leading the way with our range of recombinant antibodies, knockout-validated antibodies and knockout cell lines, all of which support improved reproducibility.</p> <p>We are also planning to innovate the way in which we present recommended applications and species on our product datasheets, so that only applications & species that have been tested in our own labs, our suppliers or by selected trusted collaborators are covered by our Abpromise™ guarantee.</p> <p>In preparation for this, we have started to update the applications & species that this product is Abpromise guaranteed for.</p> <p>We are also updating the applications & species that this product has been “predicted to work with,” however this information is not covered by our Abpromise guarantee.</p> <p>Applications & species from publications and Abreviews that have not been tested in our own labs or in those of our suppliers are not covered by the Abpromise guarantee.</p> <p>Please check that this product meets your needs before purchasing. If you have any questions, special requirements or concerns, please send us an inquiry and/or contact our Support team ahead of purchase. Recommended alternatives for this product can be found below, as well as customer reviews and Q&As.</p>

Properties

Form	Liquid
Storage instructions	Shipped at 4°C. Store at +4°C short term (1-2 weeks). Store at -20°C or -80°C. Avoid freeze / thaw cycle.
Storage buffer	pH: 7.40 Preservative: 0.1% Sodium azide Constituent: PBS
Purity	Protein G purified
Clonality	Monoclonal
Clone number	18-2
Isotype	IgG1

Applications

Our [Abpromise guarantee](#) covers the use of **ab44815** in the following tested applications.

The application notes include recommended starting dilutions; optimal dilutions/concentrations should be determined by the end user.

Application	Abreviews	Notes
ICC/IF		1/100.
WB	★★★★★	1/200. Predicted molecular weight: 469 kDa.

Target

Function

Serine/threonine-protein kinase that acts as a molecular sensor for DNA damage. Involved in DNA nonhomologous end joining (NHEJ) required for double-strand break (DSB) repair and V(D)J recombination. Must be bound to DNA to express its catalytic properties. Promotes processing of hairpin DNA structures in V(D)J recombination by activation of the hairpin endonuclease artemis (DCLRE1C). The assembly of the DNA-PK complex at DNA ends is also required for the NHEJ ligation step. Required to protect and align broken ends of DNA. May also act as a scaffold protein to aid the localization of DNA repair proteins to the site of damage. Found at the ends of chromosomes, suggesting a further role in the maintenance of telomeric stability and the prevention of chromosomal end fusion. Also involved in modulation of transcription. Recognizes the substrate consensus sequence [ST]-Q. Phosphorylates 'Ser-139' of histone variant H2AX/H2AFX, thereby regulating DNA damage response mechanism. Phosphorylates DCLRE1C, c-Abl/ABL1, histone H1, HSPCA, c-jun/JUN, p53/TP53, PARP1, POU2F1, DHX9, SRF, XRCC1, XRCC1, XRCC4, XRCC5, XRCC6, WRN, MYC and RFA2. Can phosphorylate C1D not only in the presence of linear DNA but also in the presence of supercoiled DNA. Ability to phosphorylate p53/TP53 in the presence of supercoiled DNA is dependent on C1D.

Sequence similarities

Belongs to the PI3/PI4-kinase family.
Contains 1 FAT domain.
Contains 1 FATC domain.
Contains 2 HEAT repeats.
Contains 1 PI3K/PI4K domain.

Contains 3 TPR repeats.

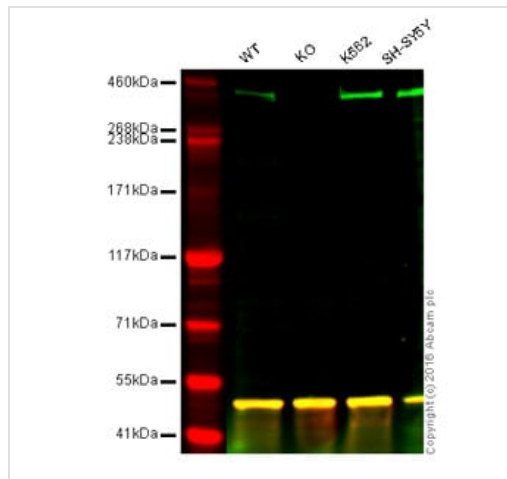
Post-translational modifications

Phosphorylated upon DNA damage, probably by ATM or ATR. Autophosphorylated on Thr-2609, Thr-2638 and Thr-2647. Thr-2609 is a DNA damage-inducible phosphorylation site (inducible with ionizing radiation, IR). Autophosphorylation induces a conformational change that leads to remodeling of the DNA-PK complex, requisite for efficient end processing and DNA repair. S-nitrosylated by GAPDH.

Cellular localization

Nucleus.

Images



Western blot - Anti-DNA PKcs antibody [18-2] (ab44815)

Lane 1: Wild-type HAP1 cell lysate (40 µg)

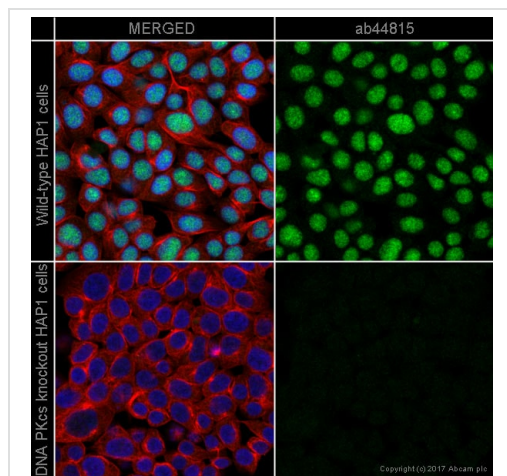
Lane 2: DNA PKcs knockout HAP1 cell lysate (40 µg)

Lane 3: K562 cell lysate (20 µg)

Lane 4: SHSY5Y cell lysate (20 µg)

Lanes 1 - 4: Merged signal (red and green). Green - ab44815 observed at 460 kDa. Red - loading control, ab18251, observed at 52 kDa.

ab44815 was shown to specifically react with DNA PKcs in wild-type HAP1 cells. No band was observed when DNA PKcs knockout samples were examined. Wild-type and DNA PKcs knockout samples were subjected to SDS-PAGE. Ab44815 and ab18251 (loading control to alpha tubulin) were diluted at 1/200 and 1/10,000 dilution respectively and incubated overnight at 4°C. Blots were developed with Goat anti-Mouse IgG H&L (IRDye® 800CW) preadsorbed ab216772 and Goat Anti-Rabbit IgG H&L (IRDye® 680RD) preadsorbed ab216777 secondary antibodies at 1/10,000 dilution for 1 hour at room temperature before imaging.



Immunocytochemistry/ Immunofluorescence - Anti-DNA PKcs antibody [18-2] (ab44815)

ab44815 staining DNA PKcs in wild-type HAP1 cells (top panel) and PRKDC knockout HAP1 cells (bottom panel). The cells were fixed with 4% formaldehyde (10min), permeabilized with 0.1% Triton X-100 for 5 minutes and then blocked with 1% BSA/10% normal goat serum/0.3M glycine in 0.1% PBS-Tween for 1h. The cells were then incubated with ab44815 at 1/100 dilution and ab202272 at 1/250 dilution (shown in pseudocolour red) overnight at +4°C, followed by a further incubation at room temperature for 1h with a goat secondary antibody to Mouse IgG (Alexa Fluor® 488) (ab150117) at 2 µg/ml (shown in green). Nuclear DNA was labelled in blue with DAPI.

Image was taken with a confocal microscope (Leica-Microsystems, TCS SP8).

Please note: All products are "FOR RESEARCH USE ONLY. NOT FOR USE IN DIAGNOSTIC PROCEDURES"

Our Abpromise to you: Quality guaranteed and expert technical support

- Replacement or refund for products not performing as stated on the datasheet
- Valid for 12 months from date of delivery
- Response to your inquiry within 24 hours

- We provide support in Chinese, English, French, German, Japanese and Spanish
- Extensive multi-media technical resources to help you
- We investigate all quality concerns to ensure our products perform to the highest standards

If the product does not perform as described on this datasheet, we will offer a refund or replacement. For full details of the Abpromise, please visit <https://www.abcam.com/abpromise> or contact our technical team.

Terms and conditions

- Guarantee only valid for products bought direct from Abcam or one of our authorized distributors