


Product datasheet

Anti-DNAJC19 antibody ab70092

1 Image

Overview

Product name	Anti-DNAJC19 antibody
Description	Mouse polyclonal to DNAJC19
Host species	Mouse
Tested applications	Suitable for: WB
Species reactivity	Reacts with: Human Predicted to work with: Mouse, Cow, Orangutan 
Immunogen	DNAJC19 full-length human protein (NP_660304.1, 1 a.a. ~ 116 a.a).

Properties

Form	Liquid
Storage instructions	Shipped at 4°C. Upon delivery aliquot. Store at -20°C or -80°C. Avoid freeze / thaw cycle.
Storage buffer	pH: 7.4 Constituent: 2.68% PBS
Purity	Protein G purified
Clonality	Polyclonal
Isotype	IgG

Applications

Our [Abpromise guarantee](#) covers the use of **ab70092** in the following tested applications.

The application notes include recommended starting dilutions; optimal dilutions/concentrations should be determined by the end user.

Application	Abreviews	Notes
WB		1/500 - 1/1000. Predicted molecular weight: 12 kDa.

Target

Function	Probable component of the PAM complex, a complex required for the translocation of transit
-----------------	--

peptide-containing proteins from the inner membrane into the mitochondrial matrix in an ATP-dependent manner. May act as a co-chaperone that stimulate the ATP-dependent activity.

Tissue specificity

Ubiquitously expressed.

Involvement in disease

Defects in DNAJC19 are the cause of 3-methylglutaconic aciduria type 5 (MGA5) [MIM:610198]; also known as dilated cardiomyopathy with ataxia (DCMA). MGA5 is an autosomal recessive disorder characterized by early-onset dilated cardiomyopathy, growth failure, cerebellar ataxia causing significant motor delays, testicular dysgenesis, growth failure, and significant increases in urine organic acids, particularly 3-methylglutaconic acid and 3-methylglutaric acid.

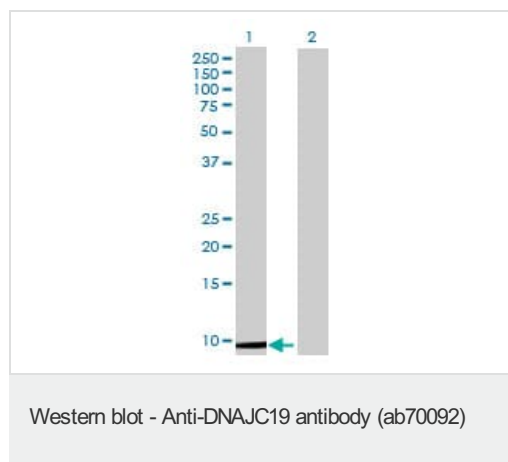
Sequence similarities

Belongs to the TIM14 family.
Contains 1 J domain.

Cellular localization

Mitochondrion inner membrane.

Images



All lanes : Anti-DNAJC19 antibody (ab70092) at 1/500 dilution

Lane 1 : DNAJC19 transfected lysate

Lane 2 : Non-transfected lysate

Lysates/proteins at 25 µg per lane.

Predicted band size: 12 kDa

Please note: All products are "FOR RESEARCH USE ONLY. NOT FOR USE IN DIAGNOSTIC PROCEDURES"

Our Abpromise to you: Quality guaranteed and expert technical support

- Replacement or refund for products not performing as stated on the datasheet
- Valid for 12 months from date of delivery
- Response to your inquiry within 24 hours
- We provide support in Chinese, English, French, German, Japanese and Spanish
- Extensive multi-media technical resources to help you
- We investigate all quality concerns to ensure our products perform to the highest standards

If the product does not perform as described on this datasheet, we will offer a refund or replacement. For full details of the Abpromise, please visit <https://www.abcam.com/abpromise> or contact our technical team.

Terms and conditions

- Guarantee only valid for products bought direct from Abcam or one of our authorized distributors