

## Product datasheet

# Anti-DNase gamma antibody ab152118

[1 References](#) [7 Images](#)

### Overview

---

<b>Product name</b>	Anti-DNase gamma antibody
<b>Description</b>	Rabbit polyclonal to DNase gamma
<b>Host species</b>	Rabbit
<b>Tested applications</b>	<b>Suitable for:</b> WB, ICC/IF
<b>Species reactivity</b>	<b>Reacts with:</b> Human
<b>Immunogen</b>	Recombinant fragment, corresponding to a region within amino acids 115-305 of Human DNase gamma (UniProt; Q13609).
<b>Positive control</b>	A549, HeLa, HepG2 and HCT116 whole cell lysates; HeLa cells.
<b>General notes</b>	<p>The Life Science industry has been in the grips of a reproducibility crisis for a number of years. Abcam is leading the way in addressing this with our range of recombinant monoclonal antibodies and knockout edited cell lines for gold-standard validation. Please check that this product meets your needs before purchasing.</p> <p>If you have any questions, special requirements or concerns, please send us an inquiry and/or contact our Support team ahead of purchase. Recommended alternatives for this product can be found below, along with publications, customer reviews and Q&amp;As</p>

### Properties

---

<b>Form</b>	Liquid
<b>Storage instructions</b>	Shipped at 4°C. Upon delivery aliquot. Store at -20°C or -80°C. Avoid freeze / thaw cycle.
<b>Storage buffer</b>	pH: 7.00 Preservative: 0.01% Thimerosal (merthiolate) Constituents: 1.21% Tris, 0.75% Glycine, 20% Glycerol (glycerin, glycerine)
<b>Purity</b>	Immunogen affinity purified
<b>Clonality</b>	Polyclonal
<b>Isotype</b>	IgG

### Applications

---

**The Abpromise guarantee** Our [Abpromise guarantee](#) covers the use of ab152118 in the following tested applications.

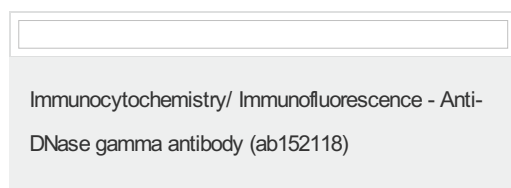
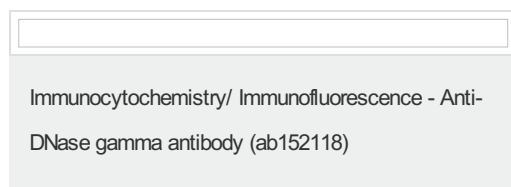
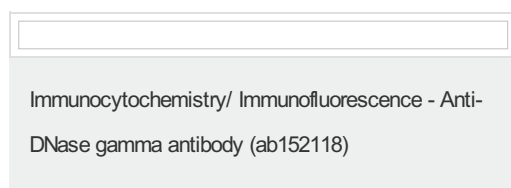
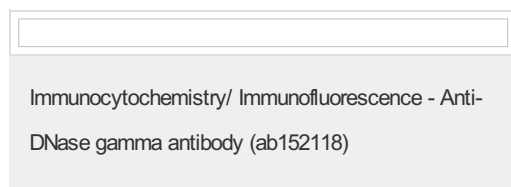
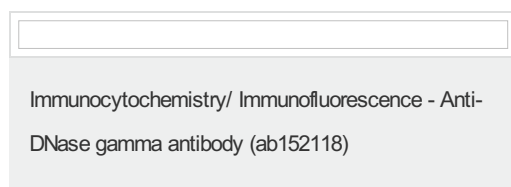
The application notes include recommended starting dilutions; optimal dilutions/concentrations should be determined by the end user.

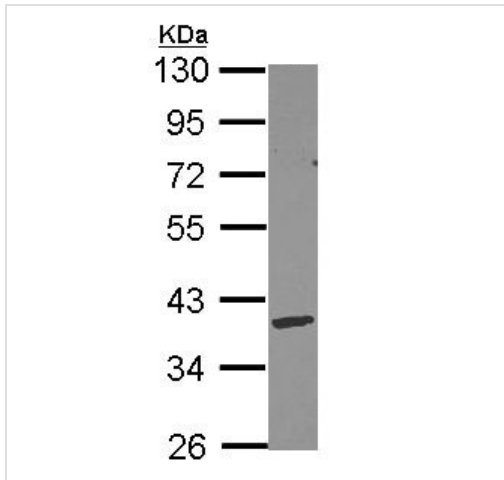
Application	Abreviews	Notes
WB		1/500 - 1/3000. Predicted molecular weight: 36 kDa.
ICC/IF		1/100 - 1/1000.

## Target

<b>Function</b>	Has DNA hydrolytic activity. Does not bind to actin. Cleaves chromatin DNA to nucleosomal units.
<b>Tissue specificity</b>	Liver and spleen.
<b>Sequence similarities</b>	Belongs to the DNase I family.
<b>Cellular localization</b>	Nucleus. May first pass through the ER membrane before being imported in the nucleus.

## Images



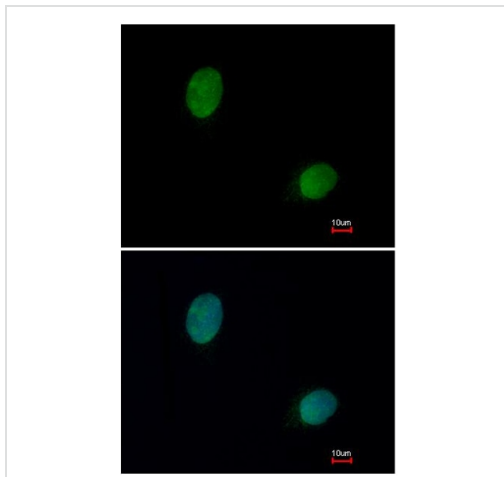


Anti-DNase gamma antibody (ab152118) at 1/1000 dilution +  
HCT116 whole cell lysate at 30 µg

**Predicted band size:** 36 kDa

10% SDS PAGE

Western blot - Anti-DNase gamma antibody  
(ab152118)



Immunofluorescent analysis of paraformaldehyde-fixed HeLa cells,  
labeling DNase gamma with ab152118 at 1/200 dilution. Lower  
image shows cells co-stained with Hoechst 33342.

Immunocytochemistry/ Immunofluorescence - Anti-  
DNase gamma antibody (ab152118)

**Please note:** All products are "FOR RESEARCH USE ONLY. NOT FOR USE IN DIAGNOSTIC PROCEDURES"

### Our Abpromise to you: Quality guaranteed and expert technical support

- Replacement or refund for products not performing as stated on the datasheet
- Valid for 12 months from date of delivery
- Response to your inquiry within 24 hours
- We provide support in Chinese, English, French, German, Japanese and Spanish
- Extensive multi-media technical resources to help you
- We investigate all quality concerns to ensure our products perform to the highest standards

If the product does not perform as described on this datasheet, we will offer a refund or replacement. For full details of the Abpromise, please visit <https://www.abcam.com/abpromise> or contact our technical team.

## Terms and conditions

---

- Guarantee only valid for products bought direct from Abcam or one of our authorized distributors