




Product datasheet

Anti-DOC2B antibody ab234643

2 Images

Overview

Product name	Anti-DOC2B antibody
Description	Rabbit polyclonal to DOC2B
Host species	Rabbit
Tested applications	Suitable for: IHC-P, ICC/IF
Species reactivity	Reacts with: Human Predicted to work with: Mouse, Rat 
Immunogen	Recombinant fragment corresponding to Human DOC2B aa 7-180. Sequence: GEKATISIQEHMAIDVCPGPIRPIKQISDYFPRFPRGLPPDA GPRAAAPP DAPARPAVAGAGRRRSPSDGAREDDDEDVDQLFGAYGSSP GPSPGPSPARPP AKPPEDEPDADGYESDDCTALGTLDFSLLYDQENNALHC TITKAKGLKPM DHNGLADPYVKLHLLPGASKANKL Database link: Q14184  Run BLAST with  Run BLAST with
Positive control	IHC-P: Human placenta tissue. ICC/IF: HepG2 cells.
General notes	<p>Reproducibility is key to advancing scientific discovery and accelerating scientists' next breakthrough.</p> <p>Abcam is leading the way with our range of recombinant antibodies, knockout-validated antibodies and knockout cell lines, all of which support improved reproducibility.</p> <p>We are also planning to innovate the way in which we present recommended applications and species on our product datasheets, so that only applications & species that have been tested in our own labs, our suppliers or by selected trusted collaborators are covered by our Abpromise™ guarantee.</p> <p>In preparation for this, we have started to update the applications & species that this product is Abpromise guaranteed for.</p> <p>We are also updating the applications & species that this product has been “predicted to work with,” however this information is not covered by our Abpromise guarantee.</p> <p>Applications & species from publications and Abreviews that have not been tested in our own labs or in those of our suppliers are not covered by the Abpromise guarantee.</p>

Please check that this product meets your needs before purchasing. If you have any questions, special requirements or concerns, please send us an inquiry and/or contact our Support team ahead of purchase. Recommended alternatives for this product can be found below, as well as customer reviews and Q&As.

Properties

Form	Liquid
Storage instructions	Shipped at 4°C. Store at +4°C short term (1-2 weeks). Upon delivery aliquot. Store at -20°C long term. Avoid freeze / thaw cycle.
Storage buffer	pH: 7.40 Constituents: 50% Glycerol (glycerin, glycerine), PBS, 0.03% Proclin 300
Purity	Protein G purified
Purification notes	Purity >95%.
Clonality	Polyclonal
Isotype	IgG

Applications

Our [Abpromise guarantee](#) covers the use of **ab234643** in the following tested applications.

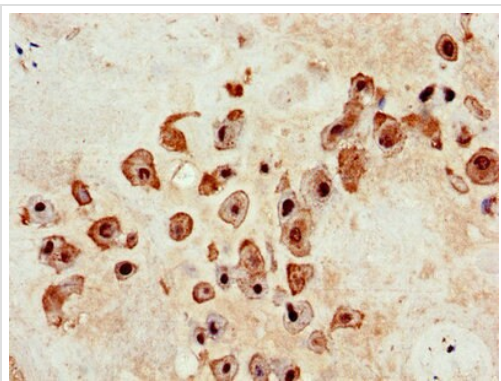
The application notes include recommended starting dilutions; optimal dilutions/concentrations should be determined by the end user.

Application	Abreviews	Notes
IHC-P		1/20 - 1/200.
ICC/IF		1/50 - 1/200.

Target

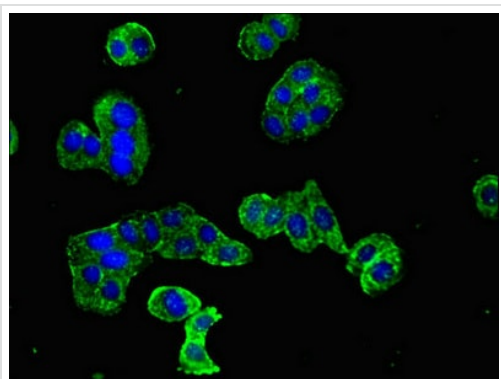
Function	Calcium sensor which positively regulates SNARE-dependent fusion of vesicles with membranes. Binds phospholipids in a calcium-dependent manner and may act at the priming stage of fusion by modifying membrane curvature to stimulate fusion. Involved in calcium-triggered exocytosis in chromaffin cells and calcium-dependent spontaneous release of neurotransmitter in absence of action potentials in neuronal cells. Involved both in glucose-stimulated insulin secretion in pancreatic cells and insulin-dependent GLUT4 transport to the plasma membrane in adipocytes.
Tissue specificity	Widely expressed with highest levels in brain and kidney. Expressed in pancreatic islet cells (at protein level).
Sequence similarities	Contains 2 C2 domains.
Domain	C2 domain 1 is involved in binding calcium and phospholipids. C2 domain 2 may also play a role in the calcium-dependent targeting to membranes.
Cellular localization	Cytoplasm. Cytoplasmic granule. Cell membrane. Translocates to the plasma membrane in a calcium-dependent manner.

Images



Immunohistochemistry (Formalin/PFA-fixed paraffin-embedded sections) - Anti-DOC2B antibody (ab234643)

Paraffin-embedded human placenta tissue stained for DOC2B using ab234643 at 1/100 dilution in immunohistochemical analysis.



Immunocytochemistry/ Immunofluorescence - Anti-DOC2B antibody (ab234643)

HepG2 cells (Human liver hepatocellular carcinoma cell line) cells stained for DOC2B (green) using ab234643 at 1/100 dilution in ICC/IF, followed by Alexa-Fluor 488[®] conjugated Goat Anti-Rabbit IgG (H+L).

Please note: All products are "FOR RESEARCH USE ONLY. NOT FOR USE IN DIAGNOSTIC PROCEDURES"

Our Abpromise to you: Quality guaranteed and expert technical support

- Replacement or refund for products not performing as stated on the datasheet
- Valid for 12 months from date of delivery
- Response to your inquiry within 24 hours
- We provide support in Chinese, English, French, German, Japanese and Spanish
- Extensive multi-media technical resources to help you
- We investigate all quality concerns to ensure our products perform to the highest standards

If the product does not perform as described on this datasheet, we will offer a refund or replacement. For full details of the Abpromise, please visit <https://www.abcam.com/abpromise> or contact our technical team.

Terms and conditions

- Guarantee only valid for products bought direct from Abcam or one of our authorized distributors