




Product datasheet

Anti-DOCK2 antibody ab204372

2 Images

Overview

Product name	Anti-DOCK2 antibody
Description	Rabbit polyclonal to DOCK2
Host species	Rabbit
Tested applications	Suitable for: ICC/IF, IHC-P
Species reactivity	Reacts with: Human Predicted to work with: Mouse 
Immunogen	Recombinant fragment corresponding to Human DOCK2 aa 1746-1826. Sequence: SVLSQMSFASQSMPTIPALALSVAGIPGLDEANTSPRL SQTFLQLSDGDK KTLTRKKVNQFFKTMLASKSAEEGKQIPDSL Database link: Q92608  Run BLAST with  Run BLAST with
Positive control	Human lymph node tissue and U-251 MG cells.

Properties

Form	Liquid
Storage instructions	Shipped at 4°C. Store at +4°C short term (1-2 weeks). Upon delivery aliquot. Store at -20°C long term. Avoid freeze / thaw cycle.
Storage buffer	pH: 7.20 Preservative: 0.02% Sodium azide Constituents: 40% Glycerol, 59% PBS
Purity	Immunogen affinity purified
Clonality	Polyclonal
Isotype	IgG

Applications

Our [Abpromise guarantee](#) covers the use of **ab204372** in the following tested applications.

The application notes include recommended starting dilutions; optimal dilutions/concentrations should be determined by the end user.

Application	Abreviews	Notes
ICC/IF		Use a concentration of 1 - 4 µg/ml.
IHC-P		1/200 - 1/500. Perform heat mediated antigen retrieval with citrate buffer pH 6 before commencing with IHC staining protocol.

Target

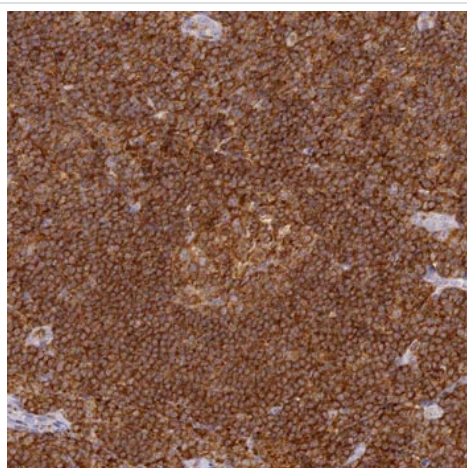
Relevance

DOCK2 (dedicator of cytokinesis 2) is a hematopoietic cell-specific protein that participates in the cytoskeletal rearrangements required for lymphocyte migration in response to chemokines. DOCK2 activates the small GTPases RAC1 and RAC2 and may also be involved in IL2 transcriptional activation via the activation of RAC2.

Cellular localization

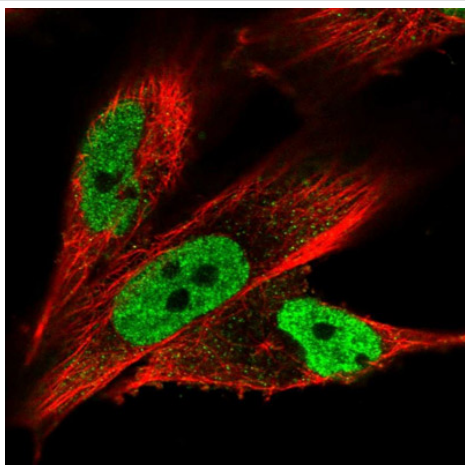
Intracytoplasmic membrane. Peripheral membrane protein. Note=Colocalizes with F-actin.

Images



Immunohistochemical analysis of paraffin embedded Human lymph node tissue, labeling DOCK2 with ab204372 at 1/200 dilution.

Immunohistochemistry (Formalin/PFA-fixed paraffin-embedded sections) - Anti-DOCK2 antibody (ab204372)



Immunofluorescence analysis of PFA-fixed, Triton X-100 permeabilized U-251 MG cells, labeling DOCK2 (green) with ab204372 at 4 µg/ml.

Immunocytochemistry/ Immunofluorescence - Anti-DOCK2 antibody (ab204372)

Please note: All products are "FOR RESEARCH USE ONLY. NOT FOR USE IN DIAGNOSTIC PROCEDURES"

Our Abpromise to you: Quality guaranteed and expert technical support

- Replacement or refund for products not performing as stated on the datasheet
- Valid for 12 months from date of delivery
- Response to your inquiry within 24 hours
- We provide support in Chinese, English, French, German, Japanese and Spanish
- Extensive multi-media technical resources to help you
- We investigate all quality concerns to ensure our products perform to the highest standards

If the product does not perform as described on this datasheet, we will offer a refund or replacement. For full details of the Abpromise, please visit <https://www.abcam.com/abpromise> or contact our technical team.

Terms and conditions

- Guarantee only valid for products bought direct from Abcam or one of our authorized distributors