




Product datasheet

Anti-DOCK6 antibody ab188558

2 Images

Overview

<b>Product name</b>	Anti-DOCK6 antibody
<b>Description</b>	Rabbit polyclonal to DOCK6
<b>Host species</b>	Rabbit
<b>Tested applications</b>	<b>Suitable for:</b> ICC/IF, IHC-P
<b>Species reactivity</b>	<b>Reacts with:</b> Human <b>Predicted to work with:</b> Mouse, Rat 
<b>Immunogen</b>	Recombinant fragment corresponding to Human DOCK6 aa 1164-1261. Sequence: LYLPLLSIARDTLPRRLHDFAE GPGQRSRLASMLDSDTEGE GDIAGTINPS VAMA IAGGPLAPGSRASISQGPPTASRAGCALSAESSRTL LACVLWVL  Database link: <a href="#">Q96HP0</a>   <a href="#">Run BLAST with</a>  <a href="#">Run BLAST with</a>
<b>Positive control</b>	IHC-P: Human liver tissue. ICC/IF: U-2 OS cells.
<b>General notes</b>	This product was previously labelled as Dedicator of cytokinesis protein 6

Properties

<b>Form</b>	Liquid
<b>Storage instructions</b>	Shipped at 4°C. Store at +4°C short term (1-2 weeks). Upon delivery aliquot. Store at -20°C long term. Avoid freeze / thaw cycle.
<b>Storage buffer</b>	pH: 7.20 Preservative: 0.02% Sodium azide Constituents: 59% PBS, 40% Glycerol
<b>Purity</b>	Immunogen affinity purified
<b>Clonality</b>	Polyclonal
<b>Isotype</b>	IgG

## Applications

Our [Abpromise guarantee](#) covers the use of **ab188558** in the following tested applications.

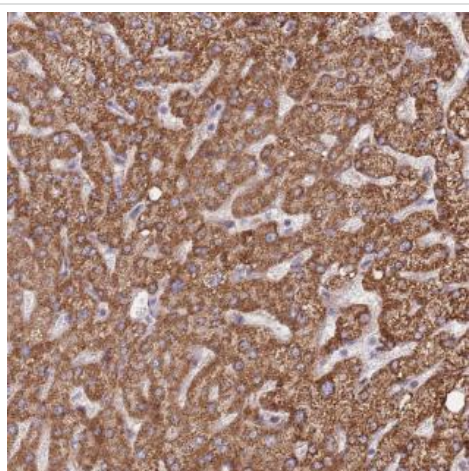
The application notes include recommended starting dilutions; optimal dilutions/concentrations should be determined by the end user.

Application	Abreviews	Notes
ICC/IF		Use a concentration of 0.25 - 2 µg/ml.
IHC-P		1/500 - 1/1000. Perform heat mediated antigen retrieval with citrate buffer pH 6 before commencing with IHC staining protocol.

## Target

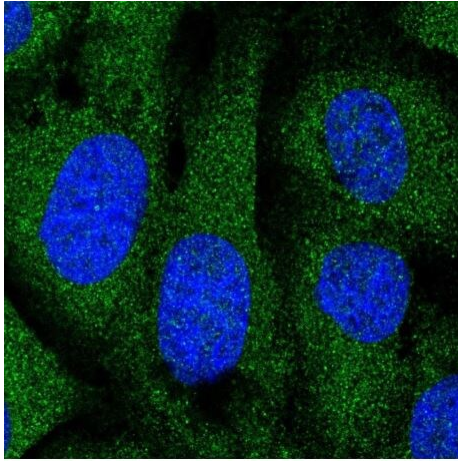
<b>Function</b>	Acts as guanine nucleotide exchange factor (GEF) for CDC42 and RAC1 small GTPases. Through its activation of CDC42 and RAC1, may regulate neurite outgrowth.
<b>Tissue specificity</b>	Widely expressed. Expressed at low level in spleen, cerebellum, hippocampus and in substantia nigra.
<b>Involvement in disease</b>	Adams-Oliver syndrome 2
<b>Sequence similarities</b>	Belongs to the DOCK family. Contains 1 DHR-1 domain. Contains 1 DHR-2 domain.
<b>Domain</b>	The DHR-2 domain may mediate some GEF activity.
<b>Cellular localization</b>	Cytoplasm. Cytoplasm > perinuclear region. Mainly located near the cell surface.

## Images



Immunohistochemical analysis of paraffin-embedded Human liver tissue labeling DOCK6 with ab188558 at 1/1000 dilution.

Immunohistochemistry (Formalin/PFA-fixed paraffin-embedded sections) - Anti-DOCK6 antibody (ab188558)



U-2 OS cells stained for DOCK6 (green) using ab188558 at 2 µg/ml in ICC/IF.

Immunocytochemistry/ Immunofluorescence - Anti-DOCK6 antibody (ab188558)

**Please note:** All products are "FOR RESEARCH USE ONLY. NOT FOR USE IN DIAGNOSTIC PROCEDURES"

### Our Abpromise to you: Quality guaranteed and expert technical support

---

- Replacement or refund for products not performing as stated on the datasheet
- Valid for 12 months from date of delivery
- Response to your inquiry within 24 hours
- We provide support in Chinese, English, French, German, Japanese and Spanish
- Extensive multi-media technical resources to help you
- We investigate all quality concerns to ensure our products perform to the highest standards

If the product does not perform as described on this datasheet, we will offer a refund or replacement. For full details of the Abpromise, please visit <https://www.abcam.com/abpromise> or contact our technical team.

### Terms and conditions

---

- Guarantee only valid for products bought direct from Abcam or one of our authorized distributors