


Product datasheet

Anti-DP1 antibody [EPR4959(2)] ab124678

Recombinant RabMAb

★★★★☆ 3 Abreviews 1 References 3 Images

Overview

Product name	Anti-DP1 antibody [EPR4959(2)]
Description	Rabbit monoclonal [EPR4959(2)] to DP1
Host species	Rabbit
Tested applications	Suitable for: Flow Cyt (Intra), WB Unsuitable for: ICC,IHC-P or IP
Species reactivity	Reacts with: Human Predicted to work with: Mouse, Rat 
Immunogen	Synthetic peptide within Human DP1 aa 350-450. The exact sequence is proprietary.
Positive control	Raji cell lysate; HeLa cells.
General notes	This product is a recombinant monoclonal antibody, which offers several advantages including: <ul style="list-style-type: none"> - High batch-to-batch consistency and reproducibility - Improved sensitivity and specificity - Long-term security of supply - Animal-free production For more information see here . Our RabMAb [®] technology is a patented hybridoma-based technology for making rabbit monoclonal antibodies. For details on our patents, please refer to RabMAb[®] patents .

Properties

Form	Liquid
Storage instructions	Shipped at 4°C. Upon delivery aliquot. Store at -20°C. Avoid freeze / thaw cycle.
Storage buffer	pH: 7.2 Preservative: 0.05% Sodium azide Constituents: 40% Glycerol (glycerin, glycerine), 9.85% Tris glycine, 50% Tissue culture supernatant
Purity	Protein A purified
Clonality	Monoclonal
Clone number	EPR4959(2)

Isotype

IgG

Applications

The Abpromise guarantee

Our [Abpromise guarantee](#) covers the use of ab124678 in the following tested applications.

The application notes include recommended starting dilutions; optimal dilutions/concentrations should be determined by the end user.

Application	Abreviews	Notes
Flow Cyt (Intra)		1/10 - 1/100. ab172730 - Rabbit monoclonal IgG, is suitable for use as an isotype control with this antibody.
WB	★★★★★ (2)	1/10000 - 1/50000. Detects a band of approximately 49 kDa (predicted molecular weight: 45 kDa).

Application notes

Is unsuitable for ICC, IHC-P or IP.

Target

Function

Can stimulate E2F-dependent transcription. Binds DNA cooperatively with E2F family members through the E2 recognition site, 5'-TTTC[CG]CGC-3', found in the promoter region of a number of genes whose products are involved in cell cycle regulation or in DNA replication. The DP2/E2F complex functions in the control of cell-cycle progression from G1 to S phase. The E2F-1/DP complex appears to mediate both cell proliferation and apoptosis.

Tissue specificity

Highest levels in muscle. Also expressed in brain, placenta, liver and kidney. Lower levels in lung and pancreas. Not detected in heart.

Sequence similarities

Belongs to the E2F/DP family.

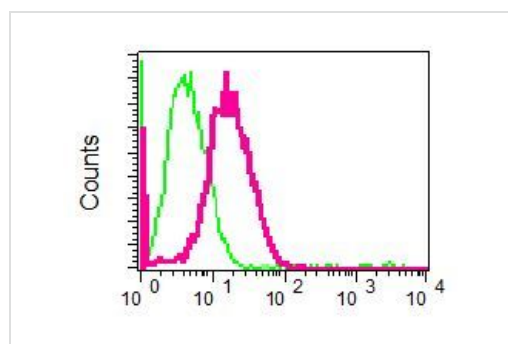
Post-translational modifications

Phosphorylation by E2F-1-bound cyclin A-CDK2, in the S phase, inhibits E2F-mediated DNA binding and transactivation.

Cellular localization

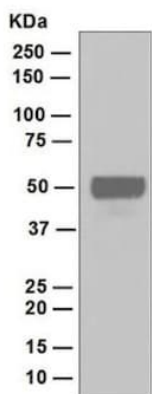
Nucleus.

Images



ab124678 at 1/10 dilution staining DP1 in permeabilized HeLa cells by intracellular flow cytometry (red). Rabbit IgG negative control (green).

Flow Cytometry (Intracellular) - Anti-DP1 antibody
[EPR4959(2)] (ab124678)



Anti-DP1 antibody [EPR4959(2)] (ab124678) at 1/10000 dilution +
Raji cell lysate at 10 µg

Secondary

Goat anti-Rabbit HRP at 1/2000 dilution

Predicted band size: 45 kDa

Observed band size: 49 kDa

Western blot - Anti-DP1 antibody [EPR4959(2)]
(ab124678)

Why choose a recombinant antibody?



Research with confidence
Consistent and reproducible results



Long-term and scalable supply
Recombinant technology



Success from the first experiment
Confirmed specificity



Ethical standards compliant
Animal-free production

Anti-DP1 antibody [EPR4959(2)] (ab124678)

Please note: All products are "FOR RESEARCH USE ONLY. NOT FOR USE IN DIAGNOSTIC PROCEDURES"

Our Abpromise to you: Quality guaranteed and expert technical support

- Replacement or refund for products not performing as stated on the datasheet
- Valid for 12 months from date of delivery
- Response to your inquiry within 24 hours
- We provide support in Chinese, English, French, German, Japanese and Spanish
- Extensive multi-media technical resources to help you
- We investigate all quality concerns to ensure our products perform to the highest standards

If the product does not perform as described on this datasheet, we will offer a refund or replacement. For full details of the Abpromise, please visit <https://www.abcam.com/abpromise> or contact our technical team.

Terms and conditions

- Guarantee only valid for products bought direct from Abcam or one of our authorized distributors