


Product datasheet

Anti-Draxin antibody ab119707

2 Images

Overview

Product name	Anti-Draxin antibody
Description	Rabbit polyclonal to Draxin
Host species	Rabbit
Tested applications	Suitable for: WB, ICC
Species reactivity	Reacts with: Mouse, Rat, Chicken Predicted to work with: Human 
Immunogen	Synthetic peptide corresponding to Human Draxin (C terminal) conjugated to keyhole limpet haemocyanin.
Positive control	Rat PC12 cells and cell lysate; Rat P1 brain, chick E9 brain and adult Mouse brain lysates.
General notes	<p>Do not aliquot.</p> <p>Reproducibility is key to advancing scientific discovery and accelerating scientists' next breakthrough.</p> <p>Abcam is leading the way with our range of recombinant antibodies, knockout-validated antibodies and knockout cell lines, all of which support improved reproducibility.</p> <p>We are also planning to innovate the way in which we present recommended applications and species on our product datasheets, so that only applications & species that have been tested in our own labs, our suppliers or by selected trusted collaborators are covered by our Abpromise™ guarantee.</p> <p>In preparation for this, we have started to update the applications & species that this product is Abpromise guaranteed for.</p> <p>We are also updating the applications & species that this product has been “predicted to work with,” however this information is not covered by our Abpromise guarantee.</p> <p>Applications & species from publications and Abreviews that have not been tested in our own labs or in those of our suppliers are not covered by the Abpromise guarantee.</p> <p>Please check that this product meets your needs before purchasing. If you have any questions, special requirements or concerns, please send us an inquiry and/or contact our Support team ahead of purchase. Recommended alternatives for this product can be found below, as well as customer reviews and Q&As.</p>

Properties

Form	Liquid
Storage instructions	Shipped at 4°C. Store at -20°C. Stable for 12 months at -20°C.
Storage buffer	Preservative: 0.05% Sodium azide Constituents: 49% PBS, 50% Glycerol, 0.1% BSA
Purity	Immunogen affinity purified
Purification notes	ab119707 was peptide affinity purified.
Clonality	Polyclonal
Isotype	IgG

Applications

Our [Abpromise guarantee](#) covers the use of **ab119707** in the following tested applications.

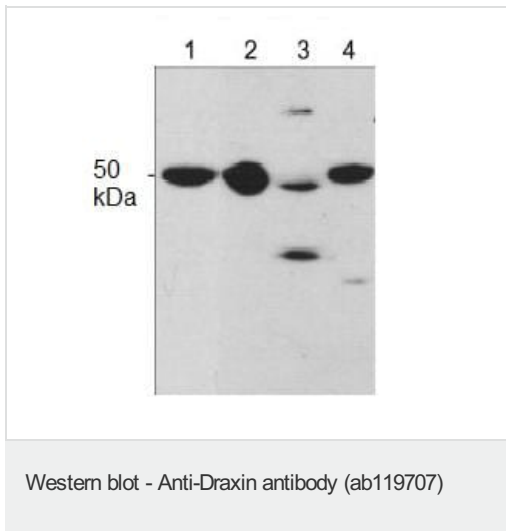
The application notes include recommended starting dilutions; optimal dilutions/concentrations should be determined by the end user.

Application	Abreviews	Notes
WB		1/1000. Detects a band of approximately 50 kDa (predicted molecular weight: 38 kDa).
ICC		1/100.

Target

Function	Chemorepulsive axon guidance protein required for the development of spinal cord and forebrain commissures. Acts as a chemorepulsive guidance protein for commissural axons during development. Able to inhibit or repel neurite outgrowth from dorsal spinal cord. Inhibits the stabilization of cytosolic beta-catenin (CTNNB1) via its interaction with LRP6, thereby acting as an antagonist of Wnt signaling pathway.
Sequence similarities	Belongs to the draxin family.
Cellular localization	Secreted.

Images



All lanes : Anti-Draxin antibody (ab119707) at 1/1000 dilution

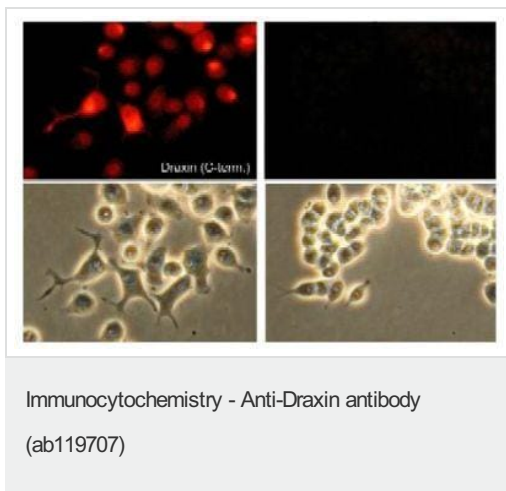
Lane 1 : Rat PC12 cell lysate

Lane 2 : Rat P1 brain lysate

Lane 3 : Adult mouse brain lysate

Lane 4 : Chick E9 brain lysate

Predicted band size: 38 kDa



ab119707 at 1/100 dilution staining Draxin in Rat PC12 cells, differentiated with NGF, by Immunocytochemistry in the absence (left) or presence (right) of blocking peptide. The lower images show corresponding phase images.

detection used an appropriate secondary antibody conjugated to Cy3.

Please note: All products are "FOR RESEARCH USE ONLY. NOT FOR USE IN DIAGNOSTIC PROCEDURES"

Our Abpromise to you: Quality guaranteed and expert technical support

- Replacement or refund for products not performing as stated on the datasheet
- Valid for 12 months from date of delivery
- Response to your inquiry within 24 hours
- We provide support in Chinese, English, French, German, Japanese and Spanish
- Extensive multi-media technical resources to help you
- We investigate all quality concerns to ensure our products perform to the highest standards

If the product does not perform as described on this datasheet, we will offer a refund or replacement. For full details of the Abpromise, please visit <https://www.abcam.com/abpromise> or contact our technical team.

Terms and conditions

- Guarantee only valid for products bought direct from Abcam or one of our authorized distributors