


Product datasheet

Anti-DRG1 antibody ab229475

1 Image

Overview

|                            |  |
|----------------------------|--|
| <b>Product name</b>        | Anti-DRG1 antibody   |
| <b>Description</b>         | Rabbit polyclonal to DRG1  |
| <b>Host species</b>        | Rabbit   |
| <b>Tested applications</b> | <b>Suitable for:</b> WB  |
| <b>Species reactivity</b>  | <b>Reacts with:</b> Human<br><b>Predicted to work with:</b> Mouse, Rat, Rabbit, Chicken, Cow, Xenopus laevis, Zebrafish, Rhesus monkey  |
| <b>Immunogen</b>           | Recombinant fragment within Human DRG1 (internal sequence). The exact sequence is proprietary.<br>Database link: <a href="#">Q9Y295</a>  |
| <b>Positive control</b>    | WB: HEK-293T, A431, HeLa and HepG2 whole cell extracts.  |

Properties

|                             |   |
|-----------------------------|---|
| <b>Form</b>                 | Liquid  |
| <b>Storage instructions</b> | Shipped at 4°C. Store at +4°C short term (1-2 weeks). Upon delivery aliquot. Store at -20°C long term. Avoid freeze / thaw cycle. |
| <b>Storage buffer</b>       | pH: 7.00<br>Preservative: 0.025% Proclin<br>Constituents: PBS, 20% Glycerol   |
| <b>Purity</b>               | Immunogen affinity purified   |
| <b>Clonality</b>            | Polyclonal  |
| <b>Isotype</b>              | IgG   |

Applications

Our [Abpromise guarantee](#) covers the use of **ab229475** in the following tested applications.

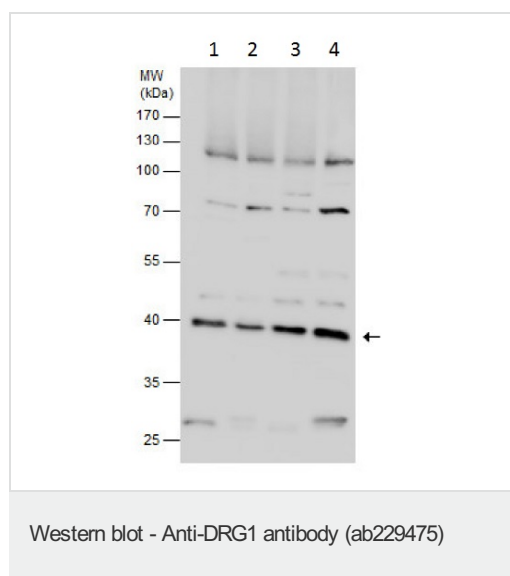
The application notes include recommended starting dilutions; optimal dilutions/concentrations should be determined by the end user.

| Application | Abreviews | Notes   |
|-------------|-----------|---|
| WB          |           | 1/500 - 1/3000. Predicted molecular weight: 41 kDa. |

## Target

|   |   |
|---|---|
| <b>Function</b>                         | May play a role in cell proliferation, differentiation and death.   |
| <b>Tissue specificity</b>               | High levels in skeletal muscle, heart, and kidney. Intermediate levels in liver, placenta and brain. Low levels in colon, thymus, spleen, small intestine, lung and leukocytes. |
| <b>Sequence similarities</b>            | Belongs to the GTP1/OBG family.<br>Contains 1 G (guanine nucleotide-binding) domain.  |
| <b>Domain</b>                           | Its C-terminal domain interacts with TAL1.  |
| <b>Post-translational modifications</b> | Polyubiquitinated; which induces proteolytic degradation and is impaired by interaction with ZC3H15.<br>Sumoylated by UBE2I in response to MEKK1-mediated stimuli.              |
| <b>Cellular localization</b>            | Cytoplasm.  |

## Images



**All lanes :** Anti-DRG1 antibody (ab229475) at 1/1000 dilution

**Lane 1 :** HEK-293T (Human epithelial cell line from embryonic kidney transformed with large T antigen) whole cell extracts

**Lane 2 :** A431 (Human epidermoid carcinoma cell line) whole cell extracts

**Lane 3 :** HeLa (Human epithelial cell line from cervix adenocarcinoma) whole cell extracts

**Lane 4 :** HepG2 (Human liver hepatocellular carcinoma cell line) whole cell extracts

Lysates/proteins at 30 µg per lane.

Developed using the ECL technique.

**Predicted band size:** 41 kDa

10% SDS-PAGE gel.

**Please note:** All products are "FOR RESEARCH USE ONLY. NOT FOR USE IN DIAGNOSTIC PROCEDURES"

## **Our Abpromise to you: Quality guaranteed and expert technical support**

---

- Replacement or refund for products not performing as stated on the datasheet
- Valid for 12 months from date of delivery
- Response to your inquiry within 24 hours
  
- We provide support in Chinese, English, French, German, Japanese and Spanish
- Extensive multi-media technical resources to help you
- We investigate all quality concerns to ensure our products perform to the highest standards

If the product does not perform as described on this datasheet, we will offer a refund or replacement. For full details of the Abpromise, please visit <https://www.abcam.com/abpromise> or contact our technical team.

## **Terms and conditions**

---

- Guarantee only valid for products bought direct from Abcam or one of our authorized distributors