




Product datasheet

Anti-DSE antibody ab238873

3 Images

Overview

<b>Product name</b>	Anti-DSE antibody
<b>Description</b>	Rabbit polyclonal to DSE
<b>Host species</b>	Rabbit
<b>Tested applications</b>	<b>Suitable for:</b> ICC/IF, IHC-P
<b>Species reactivity</b>	<b>Reacts with:</b> Human <b>Predicted to work with:</b> Mouse, Cow 
<b>Immunogen</b>	Recombinant fragment corresponding to Human DSE aa 23-270. Sequence:  YITDENPEVMIPFTNANYDSHPMLYFSRAEVAELQLRAASS HEHIAARLT EAVHTMLSSPLEYLPWPDPKDYSARWNEIFGNNLGALAM FCVLYPENIEA RDMAKDYMERMAAQPSWLVKDAPWDEVPLAHSLVGFA TAYDFLYNLSKT QQEKFLEVIANASGYMYETSYRRGWGFQYLHNNHQPTNCM ALLTGSLVLMN QGYLQEAYLWTKQVLTIMEKSLVLLREVTDGSLYEGVAYG SYTTRSLF  Database link: <a href="#">Q9UL01</a>   <a href="#">Run BLAST with</a>  <a href="#">Run BLAST with</a>
<b>Positive control</b>	IHC-P: Human kidney and liver cancer tissue. ICC/IF: U-251 MG cells.
<b>General notes</b>	This product was previously labelled as SART2

Reproducibility is key to advancing scientific discovery and accelerating scientists' next breakthrough.

Abcam is leading the way with our range of recombinant antibodies, knockout-validated antibodies and knockout cell lines, all of which support improved reproducibility.

We are also planning to innovate the way in which we present recommended applications and species on our product datasheets, so that only applications & species that have been tested in our own labs, our suppliers or by selected trusted collaborators are covered by our Abpromise™ guarantee.

In preparation for this, we have started to update the applications & species that this product is Abpromise guaranteed for.

We are also updating the applications & species that this product has been “predicted to work with,” however this information is not covered by our Abpromise guarantee.

Applications & species from publications and Abreviews that have not been tested in our own labs or in those of our suppliers are not covered by the Abpromise guarantee.

Please check that this product meets your needs before purchasing. If you have any questions, special requirements or concerns, please send us an inquiry and/or contact our Support team ahead of purchase. Recommended alternatives for this product can be found below, as well as customer reviews and Q&As.

## Properties

<b>Form</b>	Liquid
<b>Storage instructions</b>	Shipped at 4°C. Store at +4°C short term (1-2 weeks). Upon delivery aliquot. Store at -20°C long term. Avoid freeze / thaw cycle.
<b>Storage buffer</b>	pH: 7.40 Constituents: 50% Glycerol (glycerin, glycerine), PBS, 0.03% Proclin 300
<b>Purity</b>	Protein G purified
<b>Purification notes</b>	Purity greater than 95%.
<b>Clonality</b>	Polyclonal
<b>Isotype</b>	IgG

## Applications

Our [Abpromise guarantee](#) covers the use of **ab238873** in the following tested applications.

The application notes include recommended starting dilutions; optimal dilutions/concentrations should be determined by the end user.

Application	Abreviews	Notes
ICC/IF		1/50 - 1/200.
IHC-P		1/20 - 1/200.

## Target

<b>Function</b>	Converts D-glucuronic acid to L-iduronic acid (IdoUA) residues.
<b>Tissue specificity</b>	Ubiquitously expressed with higher expression in kidney and ovary and lower expression in brain, colon and thymus. Also expressed in renal cell carcinomas, brain tumors, and in a part of melanomas and adenocarcinomas from organs other than the breast. Expressed in squamous cell carcinomas (SCC), glioma, and some adenocarcinoma cell lines, but not in breast cancer cell lines or any normal tissues (at protein level).
<b>Pathway</b>	Glycan metabolism; chondroitin sulfate biosynthesis. Glycan metabolism; heparan sulfate biosynthesis.

**Sequence similarities**

Belongs to the dermatan-sulfate isomerase family.

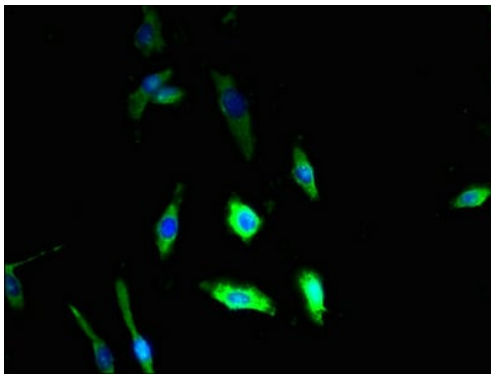
**Cellular localization**

Membrane.

---

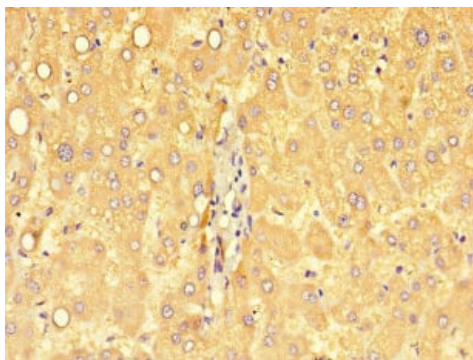
**Images**

---



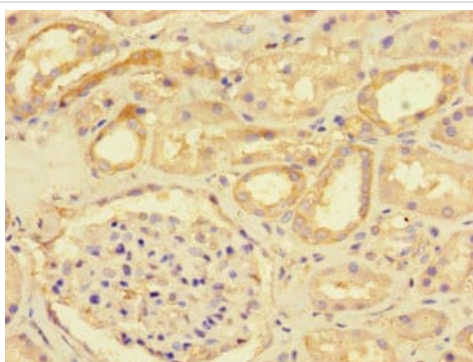
U-251 MG (human brain glioma cell line) cells stained for DSE (green) using ab238873 at 1/100 dilution in ICC/IF. Secondary antibody is Alexa Fluor<sup>®</sup> 488-conjugated Goat Anti-Rabbit IgG (H+L).

Immunocytochemistry/ Immunofluorescence - Anti-DSE antibody (ab238873)



Paraffin-embedded human liver cancer tissue stained for DSE using ab238873 at 1/100 dilution in immunohistochemical analysis.

Immunohistochemistry (Formalin/PFA-fixed paraffin-embedded sections) - Anti-DSE antibody (ab238873)



Paraffin-embedded human kidney tissue stained for DSE using ab238873 at 1/100 dilution in immunohistochemical analysis.

Immunohistochemistry (Formalin/PFA-fixed paraffin-embedded sections) - Anti-DSE antibody (ab238873)

**Please note:** All products are "FOR RESEARCH USE ONLY. NOT FOR USE IN DIAGNOSTIC PROCEDURES"

### **Our Abpromise to you: Quality guaranteed and expert technical support**

---

- Replacement or refund for products not performing as stated on the datasheet
- Valid for 12 months from date of delivery
- Response to your inquiry within 24 hours
  
- We provide support in Chinese, English, French, German, Japanese and Spanish
- Extensive multi-media technical resources to help you
- We investigate all quality concerns to ensure our products perform to the highest standards

If the product does not perform as described on this datasheet, we will offer a refund or replacement. For full details of the Abpromise, please visit <https://www.abcam.com/abpromise> or contact our technical team.

### **Terms and conditions**

---

- Guarantee only valid for products bought direct from Abcam or one of our authorized distributors