


## Product datasheet

# Anti-DTX3L antibody ab70621

2 Images

### Overview

---

<b>Product name</b>	Anti-DTX3L antibody
<b>Description</b>	Rabbit polyclonal to DTX3L
<b>Host species</b>	Rabbit
<b>Tested applications</b>	<b>Suitable for:</b> WB, IP
<b>Species reactivity</b>	<b>Reacts with:</b> Human <b>Predicted to work with:</b> Mouse, Chimpanzee, Lizard, Rhesus monkey, Gorilla, Chinese hamster, Orangutan 
<b>Immunogen</b>	Synthetic peptide corresponding to a region between residue 700 and the C-terminus (residue 740) of human DTX3L (NP_612144.1)
<b>Positive control</b>	Whole cell lysates from HeLa, 293T and NIH3T3 cells.
<b>General notes</b>	<p>Reproducibility is key to advancing scientific discovery and accelerating scientists' next breakthrough.</p> <p>Abcam is leading the way with our range of recombinant antibodies, knockout-validated antibodies and knockout cell lines, all of which support improved reproducibility.</p> <p>We are also planning to innovate the way in which we present recommended applications and species on our product datasheets, so that only applications &amp; species that have been tested in our own labs, our suppliers or by selected trusted collaborators are covered by our Abpromise™ guarantee.</p> <p>In preparation for this, we have started to update the applications &amp; species that this product is Abpromise guaranteed for.</p> <p>We are also updating the applications &amp; species that this product has been “predicted to work with,” however this information is not covered by our Abpromise guarantee.</p> <p>Applications &amp; species from publications and Abreviews that have not been tested in our own labs or in those of our suppliers are not covered by the Abpromise guarantee.</p> <p>Please check that this product meets your needs before purchasing. If you have any questions, special requirements or concerns, please send us an inquiry and/or contact our Support team ahead of purchase. Recommended alternatives for this product can be found below, as well as customer reviews and Q&amp;As.</p>

### Properties

---

<b>Form</b>	Liquid
<b>Storage instructions</b>	Shipped at 4°C. Upon delivery aliquot and store at -20°C. Avoid freeze / thaw cycles.
<b>Storage buffer</b>	pH: 7 Preservative: 0.09% Sodium azide Constituents: 1.815% Tris, 1.764% Sodium citrate, 0.021% PBS
<b>Purity</b>	Immunogen affinity purified
<b>Clonality</b>	Polyclonal
<b>Isotype</b>	IgG

## Applications

Our [Abpromise guarantee](#) covers the use of **ab70621** in the following tested applications.

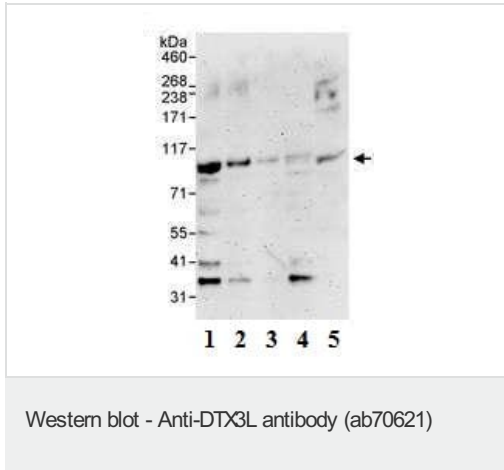
The application notes include recommended starting dilutions; optimal dilutions/concentrations should be determined by the end user.

Application	Abreviews	Notes
WB		1/2000 - 1/10000. Detects a band of approximately 90 kDa (predicted molecular weight: 83 kDa).
IP		Use at 2-5 µg/mg of lysate.

## Target

<b>Function</b>	Ubiquitin ligase that mediates monoubiquitination of 'Lys-91' of histone H4 (H4K91ub1), in response to DNA damage. Protects cells exposed to DNA-damaging agents. The exact role of H4K91ub1 in DNA damage response is still unclear but it may function as a licensing signal for additional histone H4 post-translational modifications such as H4 'Lys-20' methylation (H4K20me). Involved in the recruitment of 53BP1/TP53BP1 to sites of DNA damage by mediating H4K91ub1 formation.
<b>Pathway</b>	Protein modification; protein ubiquitination.
<b>Sequence similarities</b>	Belongs to the Deltex family. Contains 1 RING-type zinc finger.
<b>Cellular localization</b>	Cytoplasm. Nucleus.

## Images



**All lanes :** Anti-DTX3L antibody (ab70621) at 0.4 µg/ml

**Lane 1 :** HeLa whole cell lysate at 50 µg

**Lane 2 :** HeLa whole cell lysate at 15 µg

**Lane 3 :** HeLa whole cell lysate at 5 µg

**Lane 4 :** 293T whole cell lysate at 50 µg

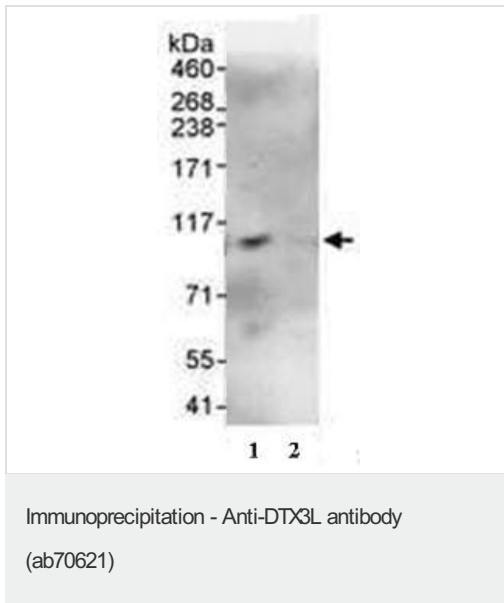
**Lane 5 :** NIH3T3 whole cell lysate at 50 µg

**Predicted band size:** 83 kDa

**Observed band size:** 90 kDa

[why is the actual band size different from the predicted?](#)

**Additional bands at:** 35 kDa, 40 kDa. We are unsure as to the identity of these extra bands.



Immunoprecipitation of HeLa whole cell lysate (1mg) using ab70621 at 3 µg/mg lysate (lane 1) or control IgG (lane 2). 20% of the immunoprecipitate was analysed by Western blot using ab70621 at 1 µg/ml.

**Please note:** All products are "FOR RESEARCH USE ONLY. NOT FOR USE IN DIAGNOSTIC PROCEDURES"

### Our Abpromise to you: Quality guaranteed and expert technical support

- Replacement or refund for products not performing as stated on the datasheet
- Valid for 12 months from date of delivery
- Response to your inquiry within 24 hours
- We provide support in Chinese, English, French, German, Japanese and Spanish
- Extensive multi-media technical resources to help you
- We investigate all quality concerns to ensure our products perform to the highest standards

If the product does not perform as described on this datasheet, we will offer a refund or replacement. For full details of the Abpromise, please visit <https://www.abcam.com/abpromise> or contact our technical team.

## Terms and conditions

---

- Guarantee only valid for products bought direct from Abcam or one of our authorized distributors