




Product datasheet

Anti-DUSP6 antibody ab166922

2 Images

Overview

Product name	Anti-DUSP6 antibody
Description	Goat polyclonal to DUSP6
Host species	Goat
Tested applications	Suitable for: WB
Species reactivity	<p>Reacts with: Mouse, Rat, Human, Pig</p> <p>Predicted to work with: Cow, Dog, Xenopus laevis, Chimpanzee, Cynomolgus monkey, Rhesus monkey, Chinese hamster </p>
Immunogen	<p>Synthetic peptide corresponding to Human DUSP6 aa 367-381 (C terminal) (Cysteine residue). Sequence:</p> <p>PSNQNVYQVDSLQST</p> <p>Database link: NP_001937.2</p> <p style="text-align: right;">  Run BLAST with  Run BLAST with </p>
Positive control	WB: Human, mouse, pig and rat heart lysates.
General notes	<p>Reproducibility is key to advancing scientific discovery and accelerating scientists' next breakthrough.</p> <p>Abcam is leading the way with our range of recombinant antibodies, knockout-validated antibodies and knockout cell lines, all of which support improved reproducibility.</p> <p>We are also planning to innovate the way in which we present recommended applications and species on our product datasheets, so that only applications & species that have been tested in our own labs, our suppliers or by selected trusted collaborators are covered by our Abpromise™ guarantee.</p> <p>In preparation for this, we have started to update the applications & species that this product is Abpromise guaranteed for.</p> <p>We are also updating the applications & species that this product has been “predicted to work with,” however this information is not covered by our Abpromise guarantee.</p> <p>Applications & species from publications and Abreviews that have not been tested in our own labs or in those of our suppliers are not covered by the Abpromise guarantee.</p> <p>Please check that this product meets your needs before purchasing. If you have any questions, special requirements or concerns, please send us an inquiry and/or contact our Support team ahead of purchase. Recommended alternatives for this product can be found below, as well as customer reviews and Q&As.</p>

Properties

Form	Liquid
Storage instructions	Shipped at 4°C. Store at +4°C short term (1-2 weeks). Upon delivery aliquot. Store at -20°C. Avoid freeze / thaw cycle.
Storage buffer	pH: 7.30 Preservative: 0.02% Sodium azide Constituents: 0.05% Tris buffered saline, 0.5% BSA
Purity	Immunogen affinity purified
Purification notes	ab166922 was purified from goat serum by ammonium sulphate precipitation followed by antigen affinity chromatography using the immunizing peptide.
Clonality	Polyclonal
Isotype	IgG

Applications

Our [Abpromise guarantee](#) covers the use of **ab166922** in the following tested applications.

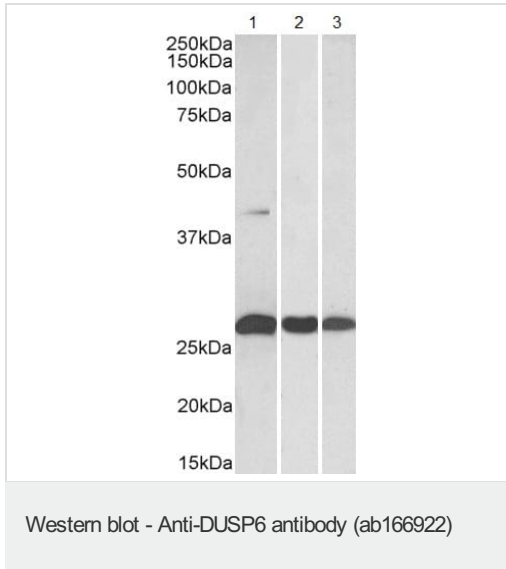
The application notes include recommended starting dilutions; optimal dilutions/concentrations should be determined by the end user.

Application	Abreviews	Notes
WB		Use a concentration of 0.3 - 1 µg/ml. Detects a band of approximately 26 kDa (predicted molecular weight: 26, 42 kDa). 1 hour primary incubation is recommended for this product.

Target

Function	Inactivates MAP kinases. Has a specificity for the ERK family.
Sequence similarities	Belongs to the protein-tyrosine phosphatase family. Non-receptor class dual specificity subfamily. Contains 1 rhodanese domain. Contains 1 tyrosine-protein phosphatase domain.
Cellular localization	Cytoplasm.

Images



All lanes : Anti-DUSP6 antibody (ab166922) at 0.3 µg/ml

Lane 1 : Human heart lysate (in RIPA buffer)

Lane 2 : Mouse heart lysate (in RIPA buffer)

Lane 3 : Rat heart lysate (in RIPA buffer)

Lysates/proteins at 35 µg per lane.

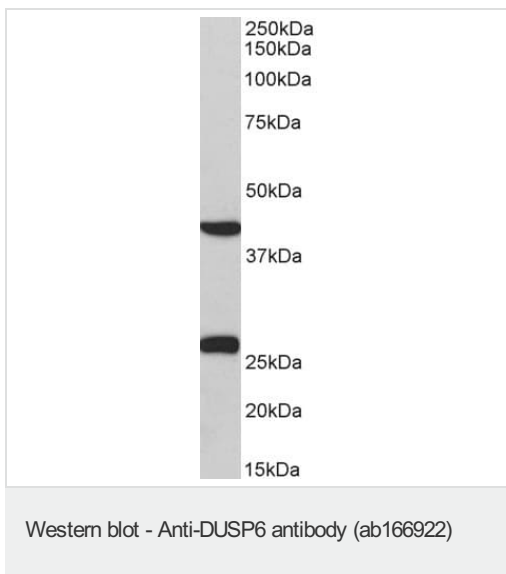
Developed using the ECL technique.

Predicted band size: 26, 42 kDa

Observed band size: 26,40 kDa

[why is the actual band size different from the predicted?](#)

Primary incubation was 1 hour.



Anti-DUSP6 antibody (ab166922) at 0.3 µg/ml + Pig heart lysate (in RIPA buffer) at 0.3 µg

Developed using the ECL technique.

Predicted band size: 26, 42 kDa

Observed band size: 26,40 kDa

[why is the actual band size](#)

[different from the predicted?](#)

Primary incubation was 1 hour.

Please note: All products are "FOR RESEARCH USE ONLY. NOT FOR USE IN DIAGNOSTIC PROCEDURES"

Our Abpromise to you: Quality guaranteed and expert technical support

- Replacement or refund for products not performing as stated on the datasheet

- Valid for 12 months from date of delivery
- Response to your inquiry within 24 hours

- We provide support in Chinese, English, French, German, Japanese and Spanish
- Extensive multi-media technical resources to help you
- We investigate all quality concerns to ensure our products perform to the highest standards

If the product does not perform as described on this datasheet, we will offer a refund or replacement. For full details of the Abpromise, please visit <https://www.abcam.com/abpromise> or contact our technical team.

Terms and conditions

- Guarantee only valid for products bought direct from Abcam or one of our authorized distributors