


Product datasheet

Anti-Dynamin 2 antibody - C-terminal ab227136

3 Images

Overview

Product name	Anti-Dynamin 2 antibody - C-terminal
Description	Rabbit polyclonal to Dynamin 2 - C-terminal
Host species	Rabbit
Tested applications	Suitable for: WB, ICC/IF, IHC-P
Species reactivity	Reacts with: Human Predicted to work with: Rhesus monkey 
Immunogen	Synthetic peptide within Human Dynamin 2 (C terminal). The exact sequence is proprietary. Conjugated to a carrier protein. Database link: P50570
Positive control	ICC/IF: HeLa cells. IHC-P: Human breast cancer tissue. WB: MOLT-4 and Raji whole cell lysates.
General notes	<p>Reproducibility is key to advancing scientific discovery and accelerating scientists' next breakthrough.</p> <p>Abcam is leading the way with our range of recombinant antibodies, knockout-validated antibodies and knockout cell lines, all of which support improved reproducibility.</p> <p>We are also planning to innovate the way in which we present recommended applications and species on our product datasheets, so that only applications & species that have been tested in our own labs, our suppliers or by selected trusted collaborators are covered by our Abpromise™ guarantee.</p> <p>In preparation for this, we have started to update the applications & species that this product is Abpromise guaranteed for.</p> <p>We are also updating the applications & species that this product has been “predicted to work with,” however this information is not covered by our Abpromise guarantee.</p> <p>Applications & species from publications and Abreviews that have not been tested in our own labs or in those of our suppliers are not covered by the Abpromise guarantee.</p> <p>Please check that this product meets your needs before purchasing. If you have any questions, special requirements or concerns, please send us an inquiry and/or contact our Support team ahead of purchase. Recommended alternatives for this product can be found below, as well as customer reviews and Q&As.</p>

Properties

Form	Liquid
Storage instructions	Shipped at 4°C. Store at +4°C short term (1-2 weeks). Upon delivery aliquot. Store at -20°C long term. Avoid freeze / thaw cycle.
Storage buffer	pH: 7.00 Preservative: 0.01% Thimerosal (merthiolate) Constituents: 1.21% Tris, 0.75% Glycine, 10% Glycerol (glycerin, glycerine)
Purity	Immunogen affinity purified
Clonality	Polyclonal
Isotype	IgG

Applications

Our [Abpromise guarantee](#) covers the use of **ab227136** in the following tested applications.

The application notes include recommended starting dilutions; optimal dilutions/concentrations should be determined by the end user.

Application	Abreviews	Notes
WB		1/500 - 1/3000. Predicted molecular weight: 98 kDa.
ICC/IF		1/100 - 1/1000.
IHC-P		1/100 - 1/1000.

Target

Function Microtubule-associated force-producing protein involved in producing microtubule bundles and able to bind and hydrolyze GTP. Most probably involved in vesicular trafficking processes, in particular endocytosis.

Tissue specificity Ubiquitously expressed.

Involvement in disease Defects in DNM2 are a cause of centronuclear myopathy autosomal dominant (ADCNM) [MIM:160150]; also known as autosomal dominant myotubular myopathy. Centronuclear myopathies (CNMs) are congenital muscle disorders characterized by progressive muscular weakness and wasting involving mainly limb girdle, trunk, and neck muscles. It may also affect distal muscles. Weakness may be present during childhood or adolescence or may not become evident until the third decade of life. Ptosis is a frequent clinical feature. CNMs comprise a wide spectrum of phenotypes, ranging from severe neonatal to mild late-onset familial forms. The most prominent histopathologic features include high frequency of centrally located nuclei in muscle fibers not secondary to regeneration, radial arrangement of sarcoplasmic strands around the central nuclei, and predominance and hypotrophy of type 1 fibers. Defects in DNM2 are the cause of Charcot-Marie-Tooth disease dominant intermediate type B (CMTDIB) [MIM:606482]. Charcot-Marie-Tooth disease (CMT) is a clinically and genetically heterogeneous disorder of the peripheral nervous system, characterized by progressive weakness and atrophy, initially of the peroneal muscles and later of the distal muscles of the arms. CMTDIB is a form of Charcot-Marie-Tooth disease characterized by clinical and pathologic features intermediate between demyelinating and axonal peripheral neuropathies, and motor median nerve conduction velocities ranging from 25 to 45 m/sec.

Sequence similarities Belongs to the dynamin family.

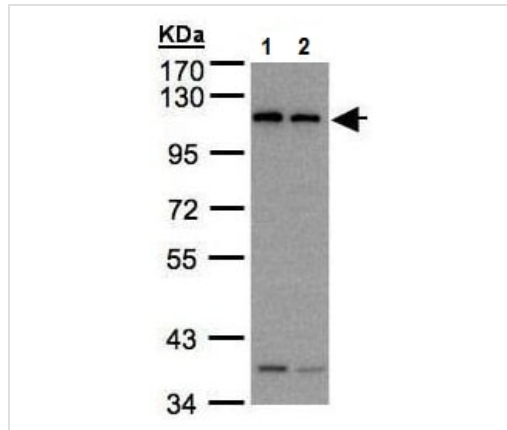
Contains 1 GED domain.

Contains 1 PH domain.

Cellular localization

Cytoplasm. Cytoplasm > cytoskeleton. Cell junction > synapse > postsynaptic cell membrane > postsynaptic density. Cell junction > synapse. Microtubule-associated. Also found in the postsynaptic density of neuronal cells.

Images



Western blot - Anti-Dynamin 2 antibody - C-terminal (ab227136)

All lanes : Anti-Dynamin 2 antibody - C-terminal (ab227136) at 1/1000 dilution

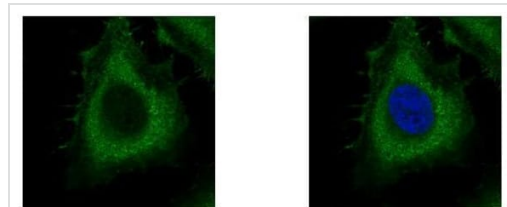
Lane 1 : MOLT-4 (human lymphoblastic leukemia cell line) whole cell lysate

Lane 2 : Raji (human Burkitt's lymphoma cell line) whole cell lysate

Lysates/proteins at 30 µg per lane.

Predicted band size: 98 kDa

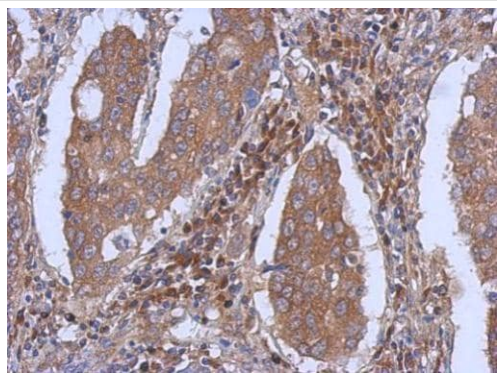
7.5% SDS-PAGE gel.



Immunocytochemistry/ Immunofluorescence - Anti-Dynamin 2 antibody - C-terminal (ab227136)

Ice-cold methanol-fixed HeLa (human epithelial cell line from cervix adenocarcinoma) cells stained for Dynamin 2 (green) using ab227136 at 1/500 dilution in ICC/IF.

Blue: Hoechst 33342 staining.



Paraffin-embedded human breast cancer tissue stained for Dynamin 2 using ab227136 at 1/500 dilution in immunohistochemical analysis.

Immunohistochemistry (Formalin/PFA-fixed paraffin-embedded sections) - Anti-Dynamin 2 antibody - C-terminal (ab227136)

Please note: All products are "FOR RESEARCH USE ONLY. NOT FOR USE IN DIAGNOSTIC PROCEDURES"

Our Abpromise to you: Quality guaranteed and expert technical support

- Replacement or refund for products not performing as stated on the datasheet
- Valid for 12 months from date of delivery
- Response to your inquiry within 24 hours
- We provide support in Chinese, English, French, German, Japanese and Spanish
- Extensive multi-media technical resources to help you
- We investigate all quality concerns to ensure our products perform to the highest standards

If the product does not perform as described on this datasheet, we will offer a refund or replacement. For full details of the Abpromise, please visit <https://www.abcam.com/abpromise> or contact our technical team.

Terms and conditions

- Guarantee only valid for products bought direct from Abcam or one of our authorized distributors