




Product datasheet

Anti-DYNC1H1 antibody ab224225

1 Image

Overview

Product name	Anti-DYNC1H1 antibody
Description	Rabbit polyclonal to DYNC1H1
Host species	Rabbit
Tested applications	Suitable for: IHC-P
Species reactivity	Reacts with: Human Predicted to work with: Mouse, Rat 
Immunogen	Recombinant fragment corresponding to Human DYNC1H1 aa 862-1003. Sequence: RSLETMYDHKTFSEILNRVQKAVDDLNLHSYNLPIW VNKLDMEIERIL GVRLQAGLRAWTQVLLGQAEDKAEVDMDTDAPQVS HKPGGEPKIKNVVHE LRITNQVIYLNPPIEECRYKLYQEMFAWKMVVLSLPRIQ SQR Database link: Q14204  Run BLAST with  Run BLAST with
Positive control	IHC-P: Human testis tissue.

Properties

Form	Liquid
Storage instructions	Shipped at 4°C. Store at +4°C short term (1-2 weeks). Upon delivery aliquot. Store at -20°C long term. Avoid freeze / thaw cycle.
Storage buffer	pH: 7.2 Preservative: 0.02% Sodium azide Constituents: 40% Glycerol, PBS
Purity	Immunogen affinity purified
Clonality	Polyclonal
Isotype	IgG

Applications

Our [Abpromise guarantee](#) covers the use of **ab224225** in the following tested applications.

The application notes include recommended starting dilutions; optimal dilutions/concentrations should be determined by the end user.

Application	Abreviews	Notes
IHC-P		1/50 - 1/200. Perform heat mediated antigen retrieval with citrate buffer pH 6 before commencing with IHC staining protocol.

Target

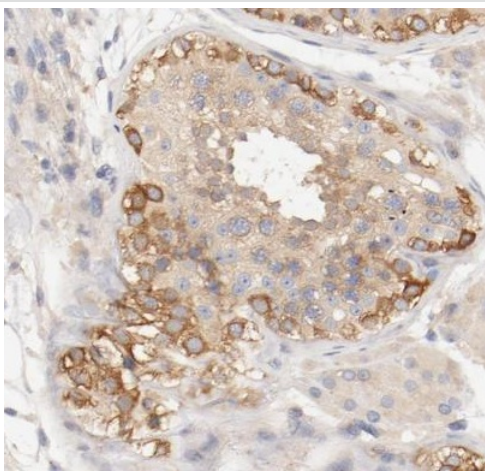
Relevance

Dyneins are a group of microtubule-activated ATPases that function as molecular motors. They are divided into two subgroups of axonemal and cytoplasmic dyneins. The cytoplasmic dyneins function in intracellular motility, including retrograde axonal transport, protein sorting, organelle movement, and spindle dynamics. Molecules of conventional cytoplasmic dynein are comprised of 2 heavy chain polypeptides and a number of intermediate and light chains. DYNC1H1 is a member of the cytoplasmic dynein heavy chain family which serves as a scaffold for the probable homodimeric assembly of the respective non-catalytic subunits.

Cellular localization

Cytoplasmic, Golgi Apparatus, Microtubule.

Images



Paraffin-embedded human testis tissue stained for DYNC1H1 using ab224225 at 1/50 dilution in immunohistochemical analysis.

Immunohistochemistry (Formalin/PFA-fixed paraffin-embedded sections) - Anti-DYNC1H1 antibody (ab224225)

Please note: All products are "FOR RESEARCH USE ONLY. NOT FOR USE IN DIAGNOSTIC PROCEDURES"

Our Abpromise to you: Quality guaranteed and expert technical support

- Replacement or refund for products not performing as stated on the datasheet

- Valid for 12 months from date of delivery
- Response to your inquiry within 24 hours

- We provide support in Chinese, English, French, German, Japanese and Spanish
- Extensive multi-media technical resources to help you
- We investigate all quality concerns to ensure our products perform to the highest standards

If the product does not perform as described on this datasheet, we will offer a refund or replacement. For full details of the Abpromise, please visit <https://www.abcam.com/abpromise> or contact our technical team.

Terms and conditions

- Guarantee only valid for products bought direct from Abcam or one of our authorized distributors