




Product datasheet

Anti-Dynein light chain antibody ab236594

4 Images

Overview

Product name	Anti-Dynein light chain antibody
Description	Rabbit polyclonal to Dynein light chain
Host species	Rabbit
Tested applications	Suitable for: WB, IHC-P, ICC/IF
Species reactivity	Reacts with: Mouse, Human Predicted to work with: Cow, Pig 
Immunogen	Recombinant full length protein corresponding to Human Dynein light chain aa 1-105. Sequence: MGETEGKKDEADYKRLQTFPLVRHSDMPEEMRVETM ELCVTACEKFSNNN ESAAKMIKETMDKKFGSSWHVVIGEGFGFEITHEVKNL LYLYFGGTLAVC VWKCS Database link: O96015  Run BLAST with  Run BLAST with
Positive control	WB: Mouse gonadal and brain lysates; HL-60 and NIH/3T3 whole cell lysates. IHC-P: Human testis and breast cancer tissues. ICC/IF: MCF7 cells.

Properties

Form	Liquid
Storage instructions	Shipped at 4°C. Store at +4°C short term (1-2 weeks). Upon delivery aliquot. Store at -20°C long term. Avoid freeze / thaw cycle.
Storage buffer	pH: 7.40 Preservative: 0.03% Proclin Constituents: 50% Glycerol, PBS
Purity	Protein G purified
Purification notes	Purity >95%.
Clonality	Polyclonal
Isotype	IgG

Applications

Our [Abpromise guarantee](#) covers the use of **ab236594** in the following tested applications.

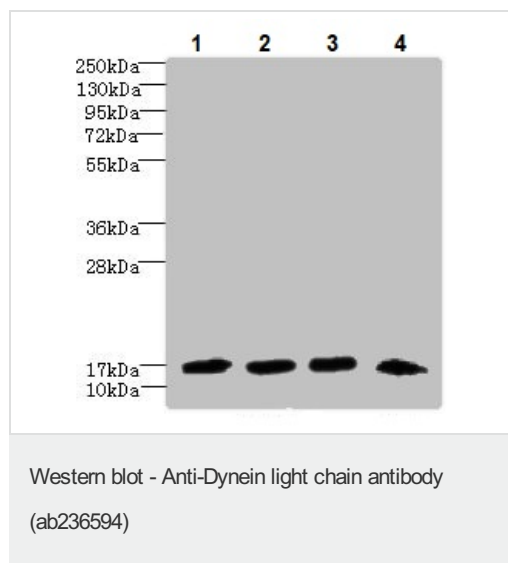
The application notes include recommended starting dilutions; optimal dilutions/concentrations should be determined by the end user.

Application	Abreviews	Notes
WB		1/500 - 1/2000. Predicted molecular weight: 12 kDa.
IHC-P		1/20 - 1/200.
ICC/IF		1/50 - 1/200.

Target

Function	Force generating protein of respiratory cilia. Produces force towards the minus ends of microtubules. Dynein has ATPase activity.
Sequence similarities	Belongs to the dynein light chain family.
Cellular localization	Cytoplasm > cytoskeleton > cilium axoneme.

Images



All lanes : Anti-Dynein light chain antibody (ab236594) at 1/500 dilution

Lane 1 : Mouse gonadal lysate

Lane 2 : HL-60 (human promyelocytic leukemia cell line) whole cell lysate

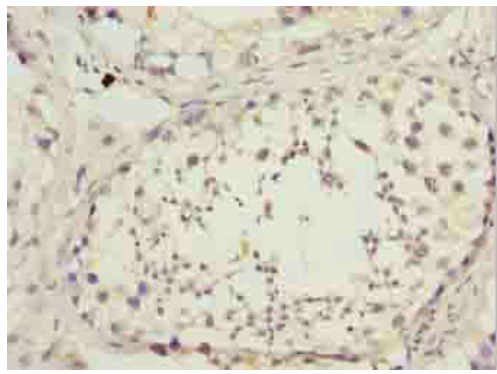
Lane 3 : NIH/3T3 (mouse embryo fibroblast cell line) whole cell lysate

Lane 4 : Mouse brain lysate

Secondary

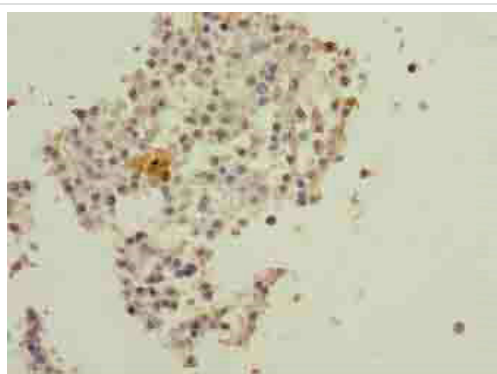
All lanes : Goat polyclonal to Rabbit IgG at 1/10000 dilution

Predicted band size: 12 kDa



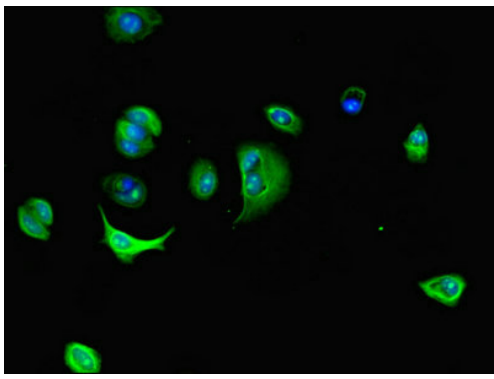
Paraffin-embedded human testis tissue stained for Dynein light chain using ab236594 at 1/100 dilution in immunohistochemical analysis.

Immunohistochemistry (Formalin/PFA-fixed paraffin-embedded sections) - Anti-Dynein light chain antibody (ab236594)



Paraffin-embedded human breast cancer tissue stained for Dynein light chain using ab236594 at 1/100 dilution in immunohistochemical analysis.

Immunohistochemistry (Formalin/PFA-fixed paraffin-embedded sections) - Anti-Dynein light chain antibody (ab236594)



Immunocytochemistry/ Immunofluorescence - Anti-Dynein light chain antibody (ab236594)

MCF7 (human breast adenocarcinoma cell line) cells stained for Dynein light chain (green) using ab236594 at 1/100 dilution in ICC/IF, followed by Alexa Fluor 488[®] conjugated Goat Anti-Rabbit IgG (H+L).

Please note: All products are "FOR RESEARCH USE ONLY. NOT FOR USE IN DIAGNOSTIC PROCEDURES"

Our Abpromise to you: Quality guaranteed and expert technical support

- Replacement or refund for products not performing as stated on the datasheet
- Valid for 12 months from date of delivery
- Response to your inquiry within 24 hours

- We provide support in Chinese, English, French, German, Japanese and Spanish
- Extensive multi-media technical resources to help you
- We investigate all quality concerns to ensure our products perform to the highest standards

If the product does not perform as described on this datasheet, we will offer a refund or replacement. For full details of the Abpromise, please visit <https://www.abcam.com/abpromise> or contact our technical team.

Terms and conditions

- Guarantee only valid for products bought direct from Abcam or one of our authorized distributors