

Product datasheet

Anti-E Cadherin antibody [SPM471] α b270257

★★★★★ 1 Abreviews 2 Images

Overview

Product name	Anti-E Cadherin antibody [SPM471]
Description	Mouse monoclonal [SPM471] to E Cadherin
Host species	Mouse
Tested applications	Suitable for: ICC, IHC-P
Species reactivity	Reacts with: Human
Immunogen	Recombinant full length protein within Human E Cadherin. The exact sequence is proprietary. Database link: P12830
Positive control	IHC-P: Human prostate carcinoma tissue. ICC: MCF7 cells.
General notes	<p>The Life Science industry has been in the grips of a reproducibility crisis for a number of years. Abcam is leading the way in addressing this with our range of recombinant monoclonal antibodies and knockout edited cell lines for gold-standard validation. Please check that this product meets your needs before purchasing.</p> <p>If you have any questions, special requirements or concerns, please send us an inquiry and/or contact our Support team ahead of purchase. Recommended alternatives for this product can be found below, along with publications, customer reviews and Q&As</p>

Properties

Form	Liquid
Storage instructions	Shipped at 4°C. Store at +4°C short term (1-2 weeks). Upon delivery aliquot. Store at -20°C. Avoid freeze / thaw cycle.
Storage buffer	pH: 7.2 Preservative: 0.05% Sodium azide Constituents: PBS, 0.05% BSA
Purity	Protein A/G purified
Purification notes	Purified from Bioreactor Concentrate.
Clonality	Monoclonal
Clone number	SPM471
Isotype	IgG1
Light chain type	kappa

Applications

The Abpromise guarantee Our [Abpromise guarantee](#) covers the use of ab270257 in the following tested applications. The application notes include recommended starting dilutions; optimal dilutions/concentrations should be determined by the end user.

Application	Abreviews	Notes
ICC		Use a concentration of 1 - 2 µg/ml.
IHC-P	★★★★★ (1)	Use a concentration of 1 - 2 µg/ml. Perform heat mediated antigen retrieval with Tris/EDTA buffer pH 9.0 before commencing with IHC staining protocol.

Target

Function

Cadherins are calcium-dependent cell adhesion proteins. They preferentially interact with themselves in a homophilic manner in connecting cells; cadherins may thus contribute to the sorting of heterogeneous cell types. CDH1 is involved in mechanisms regulating cell-cell adhesions, mobility and proliferation of epithelial cells. Has a potent invasive suppressor role. It is a ligand for integrin alpha-E/beta-7.
E-Cad/CTF2 promotes non-amyloidogenic degradation of Abeta precursors. Has a strong inhibitory effect on APP C99 and C83 production.

Tissue specificity

Non-neural epithelial tissues.

Involvement in disease

Defects in CDH1 are the cause of hereditary diffuse gastric cancer (HDGC) [MIM:137215]. An autosomal dominant cancer predisposition syndrome with increased susceptibility to diffuse gastric cancer. Diffuse gastric cancer is a malignant disease characterized by poorly differentiated infiltrating lesions resulting in thickening of the stomach. Malignant tumors start in the stomach, can spread to the esophagus or the small intestine, and can extend through the stomach wall to nearby lymph nodes and organs. It also can metastasize to other parts of the body. Note=Heterozygous germline mutations CDH1 are responsible for familial cases of diffuse gastric cancer. Somatic mutations in the has also been found in patients with sporadic diffuse gastric cancer and lobular breast cancer.
Defects in CDH1 are a cause of susceptibility to endometrial cancer (ENDMC) [MIM:608089].
Defects in CDH1 are a cause of susceptibility to ovarian cancer (OC) [MIM:167000]. Ovarian cancer common malignancy originating from ovarian tissue. Although many histologic types of ovarian neoplasms have been described, epithelial ovarian carcinoma is the most common form. Ovarian cancers are often asymptomatic and the recognized signs and symptoms, even of late-stage disease, are vague. Consequently, most patients are diagnosed with advanced disease.

Sequence similarities

Contains 5 cadherin domains.

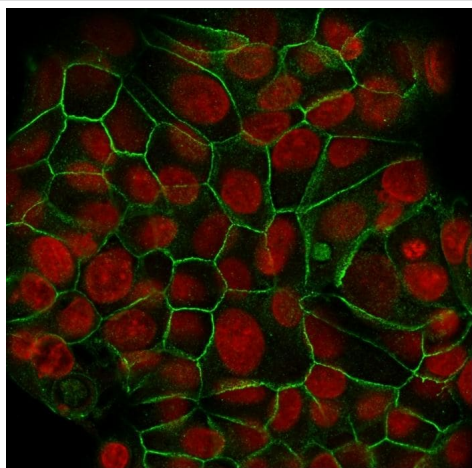
Post-translational modifications

During apoptosis or with calcium influx, cleaved by a membrane-bound metalloproteinase (ADAM10), PS1/gamma-secretase and caspase-3 to produce fragments of about 38 kDa (E-CAD/CTF1), 33 kDa (E-CAD/CTF2) and 29 kDa (E-CAD/CTF3), respectively. Processing by the metalloproteinase, induced by calcium influx, causes disruption of cell-cell adhesion and the subsequent release of beta-catenin into the cytoplasm. The residual membrane-tethered cleavage product is rapidly degraded via an intracellular proteolytic pathway. Cleavage by caspase-3 releases the cytoplasmic tail resulting in disintegration of the actin microfilament system. The gamma-secretase-mediated cleavage promotes disassembly of adherens junctions.

Cellular localization

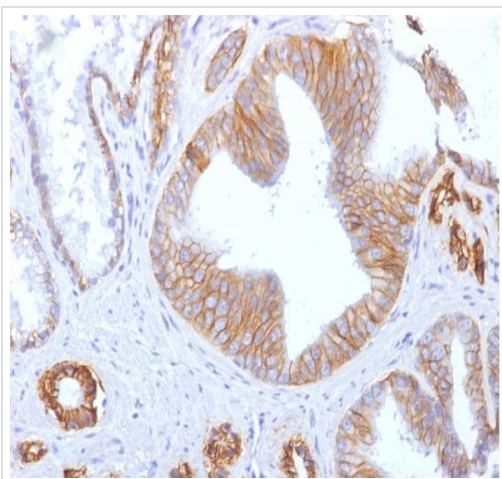
Cell junction. Cell membrane. Endosome. Golgi apparatus > trans-Golgi network. Colocalizes with DLGAP5 at sites of cell-cell contact in intestinal epithelial cells. Anchored to actin microfilaments through association with alpha-, beta- and gamma-catenin. Sequential proteolysis induced by apoptosis or calcium influx, results in translocation from sites of cell-cell contact to the cytoplasm. Colocalizes with RAB11A endosomes during its transport from the Golgi apparatus to the plasma membrane.

Images



Confocal immunofluorescence analysis of MCF7 cells labeling E Cadherin using ab270257 at 2 µg/ml (Green), followed by a CF488 secondary antibody. The nuclei is labeled using Reddot (Red).

Immunocytochemistry - Anti-E Cadherin antibody
[SPM471] (ab270257)



Formalin-fixed, paraffin-embedded human prostate carcinoma for E Cadherin using ab270257 at 2 µg/ml in immunohistochemical analysis.

Immunohistochemistry (Formalin/PFA-fixed paraffin-embedded sections) - Anti-E Cadherin antibody
[SPM471] (ab270257)

Please note: All products are "FOR RESEARCH USE ONLY. NOT FOR USE IN DIAGNOSTIC PROCEDURES"

Our Abpromise to you: Quality guaranteed and expert technical support

- Replacement or refund for products not performing as stated on the datasheet
- Valid for 12 months from date of delivery
- Response to your inquiry within 24 hours

- We provide support in Chinese, English, French, German, Japanese and Spanish
- Extensive multi-media technical resources to help you
- We investigate all quality concerns to ensure our products perform to the highest standards

If the product does not perform as described on this datasheet, we will offer a refund or replacement. For full details of the Abpromise, please visit <https://www.abcam.com/abpromise> or contact our technical team.

Terms and conditions

- Guarantee only valid for products bought direct from Abcam or one of our authorized distributors