

## Product datasheet

# E. coli Positive Control (Escherichia coli ) Whole Cell Lysate ab5395

[3 References](#) [2 Images](#)

### Overview

---

<b>Product name</b>	E. coli Positive Control (Escherichia coli ) Whole Cell Lysate
<b>General notes</b>	<p>This E.coli lysate contains a 41 kd recombinant protein <b>expressing 12 commonly used Tags</b> which are fused to the N-terminus of the protein in the order of:</p> <p>GST</p> <p>T7</p> <p>HSV</p> <p>C-Myc</p> <p>VSV-g</p> <p>Glu-Glu</p> <p>V5</p> <p>E-tag</p> <p>FLAG (DDDDK)</p> <p>S-tag</p> <p>HA</p> <p>6x His</p> <p>Excellent as a loading control for Western blotting. Lysate expresses 12 different epitope tags.</p>
<b>Tested applications</b>	<b>Suitable for:</b> WB

### Properties

---

<b>Mycoplasma free</b>	Yes
<b>Form</b>	Liquid
<b>Storage instructions</b>	Shipped at 4°C. Upon delivery aliquot and store at -20°C or -80°C. Avoid repeated freeze / thaw cycles.
<b>Storage buffer</b>	1X Loading Buffer (1X SDS-PAGE Sample Buffer: 62.5 mM Tris HCl, 2% SDS, 10% Glycerol and 0.005% bromophenol blue)
<b>Lysate notes</b>	Excellent as a loading control for Western blotting. Lysate expresses 12 different epitope tags.

## Background

*Escherichia coli* is a gram negative bacillus that belongs to a larger group of Enterobacteriaceae - bacteria that inhabit the gastrointestinal tract. Although usually a harmless resident of the gut, some strains have the potential to cause serious problems, especially where there is an immature immune system or immunosuppression, or where the subtype of organism has acquired the ability to produce pathogenic toxins.

## Applications

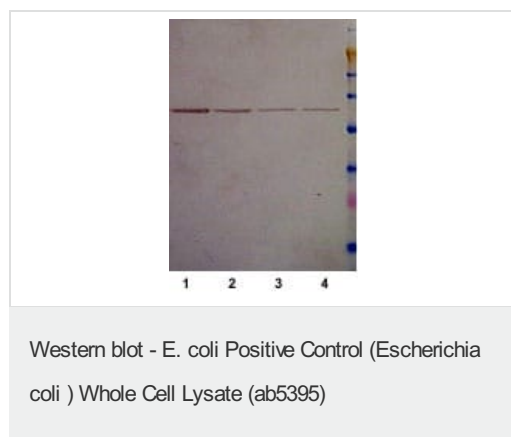
### The Abpromise guarantee

Our [Abpromise guarantee](#) covers the use of ab5395 in the following tested applications.

The application notes include recommended starting dilutions; optimal dilutions/concentrations should be determined by the end user.

Application	Abreviews	Notes
WB		Use at an assay dependent concentration. Use 0.5 - 2.0 $\mu$ l for 10 - 12% gels.

## Images



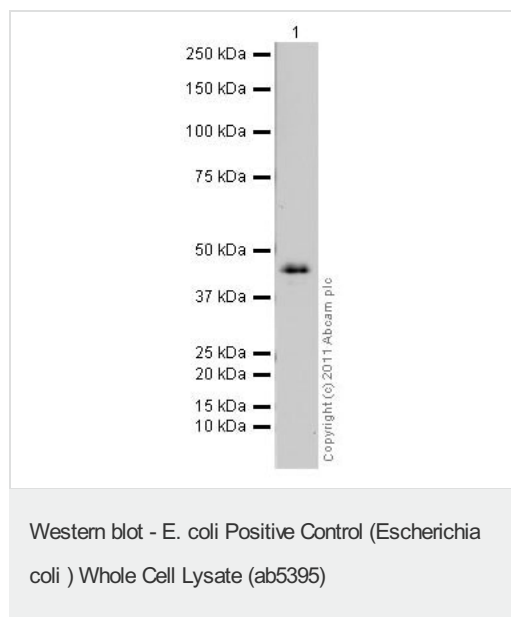
**All lanes** : Anti-6X His tag® antibody ([ab9108](#)) at 1/1000 dilution

**Lane 1** : *E. coli* Positive Control (*Escherichia coli*) Whole Cell Lysate (ab5395) at 2  $\mu$ l

**Lane 2** : *E. coli* Positive Control (*Escherichia coli*) Whole Cell Lysate (ab5395) at 1  $\mu$ l

**Lane 3** : *E. coli* Positive Control (*Escherichia coli*) Whole Cell Lysate (ab5395) at 0.5  $\mu$ l

**Lane 4** : *E. coli* Positive Control (*Escherichia coli*) Whole Cell Lysate (ab5395) at 0.25  $\mu$ l



This WB was performed using an *E. coli* lysate that expresses a 41kDa recombinant protein comprised of 12 commonly used epitope tags (T7, HSV, C-Myc, VSV-g, Glu-Glu, V5, E-tag, FLAG, S-tag, HA and 6xHis). This lysate is available as ab5395.

**Please note:** All products are "FOR RESEARCH USE ONLY. NOT FOR USE IN DIAGNOSTIC PROCEDURES"

### **Our Abpromise to you: Quality guaranteed and expert technical support**

---

- Replacement or refund for products not performing as stated on the datasheet
- Valid for 12 months from date of delivery
- Response to your inquiry within 24 hours
  
- We provide support in Chinese, English, French, German, Japanese and Spanish
- Extensive multi-media technical resources to help you
- We investigate all quality concerns to ensure our products perform to the highest standards

If the product does not perform as described on this datasheet, we will offer a refund or replacement. For full details of the Abpromise, please visit <https://www.abcam.com/abpromise> or contact our technical team.

### **Terms and conditions**

---

- Guarantee only valid for products bought direct from Abcam or one of our authorized distributors