

## Product datasheet

# Anti-E tag antibody ab3397

★★★★★ [2 Abreviews](#) [8 References](#) [1 Image](#)

### Overview

---

<b>Product name</b>	Anti-E tag antibody
<b>Description</b>	Rabbit polyclonal to E tag
<b>Host species</b>	Rabbit
<b>Tested applications</b>	<b>Suitable for:</b> ICC
<b>Species reactivity</b>	<b>Reacts with:</b> Species independent
<b>Immunogen</b>	Synthetic peptide corresponding to E tag conjugated to keyhole limpet haemocyanin.

 [Run BLAST with ExPASy](#)  [Run BLAST with NCBI](#)

### General notes

The Life Science industry has been in the grips of a reproducibility crisis for a number of years. Abcam is leading the way in addressing this with our range of recombinant monoclonal antibodies and knockout edited cell lines for gold-standard validation. Please check that this product meets your needs before purchasing.

If you have any questions, special requirements or concerns, please send us an inquiry and/or contact our Support team ahead of purchase. Recommended alternatives for this product can be found below, along with publications, customer reviews and Q&As

### Properties

---

<b>Form</b>	Liquid
<b>Storage instructions</b>	Shipped at 4°C. Store at +4°C short term (1-2 weeks). Store at -20°C or -80°C. Avoid freeze / thaw cycle.
<b>Storage buffer</b>	pH: 7.20
<b>Purity</b>	Immunogen affinity purified
<b>Clonality</b>	Polyclonal
<b>Isotype</b>	IgG

### Applications

---

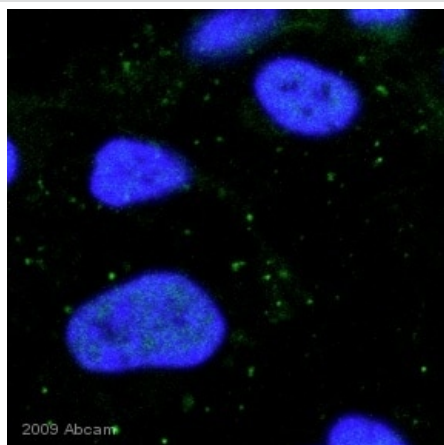
**The Abpromise guarantee** Our **Abpromise guarantee** covers the use of ab3397 in the following tested applications. The application notes include recommended starting dilutions; optimal dilutions/concentrations should be determined by the end user.

Application	Abreviews	Notes
ICC	★★★★★ (1)	Use at an assay dependent concentration.

## Target

**Relevance** E tag is a peptide epitope tag, sequence GAPVPYPDPLEPR.

## Images



ab3397 staining E tag in cultured human HUVEC cells by Immunocytochemistry. Cells were fixed with paraformaldehyde, permeabilized with 0.5% Triton x100 and blocking with 1% BSA was done for 45 minutes at 25<sup>0</sup>C. Samples were incubated with primary antibody (1/100: in 1% BSA/PBS) for 16 hours at 4°C. An FITC-conjugated donkey polyclonal to rabbit IgG was used at dilution at 1/200 as secondary antibody.

Immunocytochemistry - Anti-E tag antibody  
(ab3397)

This image is a courtesy of Anonymous Abreview

**Please note:** All products are "FOR RESEARCH USE ONLY. NOT FOR USE IN DIAGNOSTIC PROCEDURES"

## Our Abpromise to you: Quality guaranteed and expert technical support

- Replacement or refund for products not performing as stated on the datasheet
- Valid for 12 months from date of delivery
- Response to your inquiry within 24 hours
- We provide support in Chinese, English, French, German, Japanese and Spanish
- Extensive multi-media technical resources to help you
- We investigate all quality concerns to ensure our products perform to the highest standards

If the product does not perform as described on this datasheet, we will offer a refund or replacement. For full details of the Abpromise, please visit <https://www.abcam.com/abpromise> or contact our technical team.

## Terms and conditions

- Guarantee only valid for products bought direct from Abcam or one of our authorized distributors