

Product datasheet

Anti-E2F1 antibody ab14768

★★★★★ 1 Abreviews 1 References 1 Image

Overview

Product name	Anti-E2F1 antibody
Description	Rabbit polyclonal to E2F1
Host species	Rabbit
Specificity	The antibody does not cross reacts with other proteins of the E2F family members.
Tested applications	Suitable for: IP, WB
Species reactivity	Reacts with: Human
Immunogen	Synthetic peptide: PCDPDLLLFATPQAPRPTPSAPRPALGRPPVKRRLD , corresponding to amino acids 58-93 of Human E2F1.
	Run BLAST with Run BLAST with

Properties

Form	Liquid
Storage instructions	Shipped at 4°C. Store at +4°C short term (1-2 weeks). Upon delivery aliquot. Store at -20°C or -80°C. Avoid freeze / thaw cycle.
Purity	Immunogen affinity purified
Clonality	Polyclonal
Isotype	IgG

Applications

Our [Abpromise guarantee](#) covers the use of **ab14768** in the following tested applications.

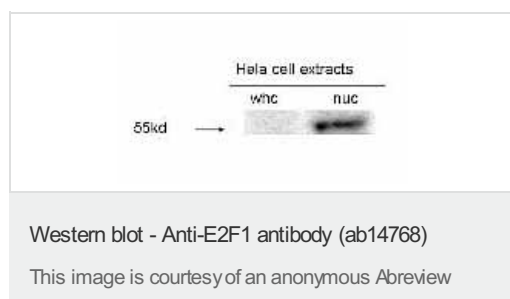
The application notes include recommended starting dilutions; optimal dilutions/concentrations should be determined by the end user.

Application	Abreviews	Notes
IP		Use at an assay dependent dilution.
WB	★★★★★	1/1000. Detects a band of approximately 53 kDa (predicted molecular weight: 47 kDa).

Target

Function	Transcription activator that binds DNA cooperatively with dp proteins through the E2 recognition site, 5'-TTTC[CG]CGC-3' found in the promoter region of a number of genes whose products are involved in cell cycle regulation or in DNA replication. The DRTF1/E2F complex functions in the control of cell-cycle progression from G1 to S phase. E2F-1 binds preferentially RB1 protein, in a cell-cycle dependent manner. It can mediate both cell proliferation and p53-dependent apoptosis.
Sequence similarities	Belongs to the E2F/DP family.
Post-translational modifications	Phosphorylated by CDK2 and cyclin A-CDK2 in the S-phase. Acetylation stimulates DNA-binding. Enhanced under stress conditions such as DNA damage and inhibited by retinoblastoma protein pRB. Regulated by KAP1/TRIM28 which recruits HDAC1 to E2F1 resulting in deacetylation. Acetylated by P/CAF/KAT2B.
Cellular localization	Nucleus.

Images



All lanes : Anti-E2F1 antibody (ab14768) at 1/500 dilution

Lane 1 : HeLa cell extract, whole cell lysate

Lane 2 : HeLa cell extract, nuclear lysate

Lysates/proteins at 50 µg per lane.

Secondary

All lanes : HRP conjugated goat anti-rabbit antibody

Predicted band size: 47 kDa

Please note: All products are "FOR RESEARCH USE ONLY AND ARE NOT INTENDED FOR DIAGNOSTIC OR THERAPEUTIC USE"

Our Abpromise to you: Quality guaranteed and expert technical support

- Replacement or refund for products not performing as stated on the datasheet
- Valid for 12 months from date of delivery
- Response to your inquiry within 24 hours
- We provide support in Chinese, English, French, German, Japanese and Spanish
- Extensive multi-media technical resources to help you
- We investigate all quality concerns to ensure our products perform to the highest standards

If the product does not perform as described on this datasheet, we will offer a refund or replacement. For full details of the Abpromise, please visit <https://www.abcam.com/abpromise> or contact our technical team.

Terms and conditions

- Guarantee only valid for products bought direct from Abcam or one of our authorized distributors