

Product datasheet

Anti-E3 ubiquitin-protein ligase MUL1 antibody [EPR20241] α b209263

Recombinant RabMAb

★★★★★ 2 Abreviews 3 References 4 Images

Overview

Product name	Anti-E3 ubiquitin-protein ligase MUL1 antibody [EPR20241]
Description	Rabbit monoclonal [EPR20241] to E3 ubiquitin-protein ligase MUL1
Host species	Rabbit
Tested applications	Suitable for: IP, WB
Species reactivity	Reacts with: Human
Immunogen	Recombinant fragment within Human E3 ubiquitin-protein ligase MUL1 aa 250 to the C-terminus. The exact sequence is proprietary. Database link: Q969V5
Positive control	WB: HEK-293, HeLa, PC-3 and A431 whole cell lysates; Human fetal heart lysate. IP: HeLa whole cell lysate.
General notes	<p>This product is a recombinant monoclonal antibody, which offers several advantages including:</p> <ul style="list-style-type: none"> - High batch-to-batch consistency and reproducibility - Improved sensitivity and specificity - Long-term security of supply - Animal-free production <p>For more information see here.</p> <p>Our RabMAb[®] technology is a patented hybridoma-based technology for making rabbit monoclonal antibodies. For details on our patents, please refer to RabMAb[®] patents.</p> <p>Reproducibility is key to advancing scientific discovery and accelerating scientists' next breakthrough.</p> <p>Abcam is leading the way with our range of recombinant antibodies, knockout-validated antibodies and knockout cell lines, all of which support improved reproducibility.</p> <p>We are also planning to innovate the way in which we present recommended applications and species on our product datasheets, so that only applications & species that have been tested in our own labs, our suppliers or by selected trusted collaborators are covered by our Abpromise[™] guarantee.</p> <p>In preparation for this, we have started to update the applications & species that this product is Abpromise guaranteed for.</p> <p>We are also updating the applications & species that this product has been "predicted to work</p>

with," however this information is not covered by our Abpromise guarantee.

Applications & species from publications and Abreviews that have not been tested in our own labs or in those of our suppliers are not covered by the Abpromise guarantee.

Please check that this product meets your needs before purchasing. If you have any questions, special requirements or concerns, please send us an inquiry and/or contact our Support team ahead of purchase. Recommended alternatives for this product can be found below, as well as customer reviews and Q&As.

Properties

Form	Liquid
Storage instructions	Shipped at 4°C. Store at +4°C short term (1-2 weeks). Upon delivery aliquot. Store at -20°C long term. Avoid freeze / thaw cycle.
Storage buffer	pH: 7.2 Preservative: 0.01% Sodium azide Constituents: 59% PBS, 40% Glycerol (glycerin, glycerine), 0.05% BSA
Purity	Protein A purified
Clonality	Monoclonal
Clone number	EPR20241
Isotype	IgG

Applications

Our [Abpromise guarantee](#) covers the use of **ab209263** in the following tested applications.

The application notes include recommended starting dilutions; optimal dilutions/concentrations should be determined by the end user.

Application	Abreviews	Notes
IP		1/30.
WB	★★★★★	1/1000. Detects a band of approximately 39 kDa (predicted molecular weight: 39 kDa).

Target

Function	Exhibits weak E3 ubiquitin-protein ligase activity, but preferentially acts as a SUMO E3 ligase at physiological concentrations. Plays a role in the control of mitochondrial morphology. Promotes mitochondrial fragmentation and influences mitochondrial localization. Inhibits cell growth. When overexpressed, activates JNK through MAP3K7/TAK1 and induces caspase-dependent apoptosis. E3 ubiquitin ligases accept ubiquitin from an E2 ubiquitin-conjugating enzyme in the form of a thioester and then directly transfer the ubiquitin to targeted substrates.
Tissue specificity	Widely expressed with highest levels in the heart, skeletal muscle, placenta, kidney and liver. Barely detectable in colon and thymus.
Pathway	Protein modification; protein ubiquitination. Protein modification; protein sumoylation.

Sequence similarities

Contains 1 RING-type zinc finger.

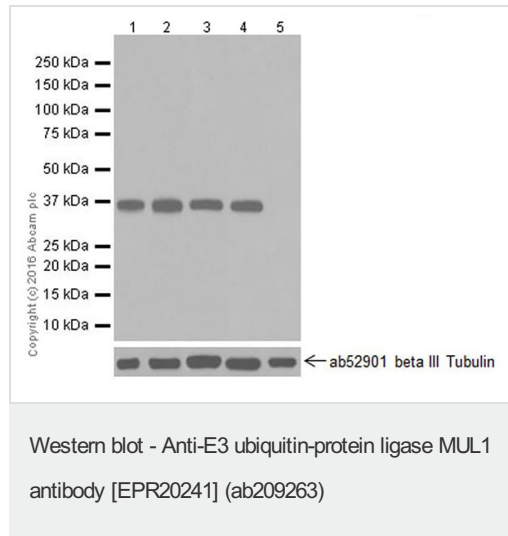
Domain

The zinc finger domain is required for E3 ligase activity.

Cellular localization

Mitochondrion outer membrane. Peroxisome. Transported in mitochondrion-derived vesicles from the mitochondrion to the peroxisome.

Images



All lanes : Anti-E3 ubiquitin-protein ligase MUL1 antibody [EPR20241] (ab209263) at 1/1000 dilution

Lane 1 : HEK-293 (Human epithelial cell line from embryonic kidney) whole cell lysate

Lane 2 : HeLa (Human epithelial cell line from cervix adenocarcinoma) whole cell lysate

Lane 3 : PC-3 (Human prostate adenocarcinoma cell line) whole cell lysate

Lane 4 : Human fetal heart lysate

Lane 5 : Human thymus lysate

Lysates/proteins at 20 µg per lane.

Secondary

All lanes : Goat Anti-Rabbit IgG H&L (HRP) (ab97051) at 1/100000 dilution

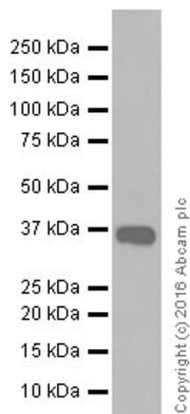
Predicted band size: 39 kDa

Observed band size: 39 kDa

Exposure time: 15 minutes

Blocking/Dilution buffer: 5% NFD/MTBST.

Negative control: Human thymus (PMID: 18591963).



Western blot - Anti-E3 ubiquitin-protein ligase MUL1 antibody [EPR20241] (ab209263)

Anti-E3 ubiquitin-protein ligase MUL1 antibody [EPR20241] (ab209263) at 1/1000 dilution + A431 (Human epidermoid carcinoma cell line) whole cell lysate at 20 µg

Secondary

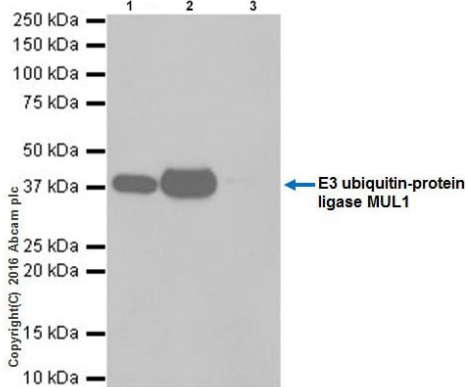
Goat Anti-Rabbit IgG H&L (HRP) (ab97051) at 1/100000 dilution

Predicted band size: 39 kDa

Observed band size: 39 kDa

Exposure time: 15 seconds

Blocking/Dilution buffer: 5% NFDm/TBST.



Immunoprecipitation - Anti-E3 ubiquitin-protein ligase MUL1 antibody [EPR20241] (ab209263)

E3 ubiquitin-protein ligase MUL1 was immunoprecipitated from 0.35 mg of HeLa (Human epithelial cell line from cervix adenocarcinoma) whole cell lysate with ab209263 at 1/30 dilution.

Western blot was performed from the immunoprecipitate using ab209263 at 1/1000 dilution.

VeriBlot for IP Detection Reagent (HRP) (ab131366), was used for detection at 1/10000 dilution.

Lane 1: HeLa whole cell lysate, 10 µg (Input).

Lane 2: ab209263 IP in HeLa whole cell lysate.

Lane 3: Rabbit monoclonal IgG (ab172730) instead of ab209263 in HeLa whole cell lysate.

Blocking and dilution buffer and concentration: 5% NFDm/TBST.

Exposure time: 3 minutes.

Why choose a recombinant antibody?



Research with confidence
Consistent and reproducible results



Long-term and scalable supply
Recombinant technology



Success from the first experiment
Confirmed specificity



Ethical standards compliant
Animal-free production

Anti-E3 ubiquitin-protein ligase MUL1 antibody
[EPR20241] (ab209263)

Please note: All products are "FOR RESEARCH USE ONLY. NOT FOR USE IN DIAGNOSTIC PROCEDURES"

Our Abpromise to you: Quality guaranteed and expert technical support

- Replacement or refund for products not performing as stated on the datasheet
- Valid for 12 months from date of delivery
- Response to your inquiry within 24 hours
- We provide support in Chinese, English, French, German, Japanese and Spanish
- Extensive multi-media technical resources to help you
- We investigate all quality concerns to ensure our products perform to the highest standards

If the product does not perform as described on this datasheet, we will offer a refund or replacement. For full details of the Abpromise, please visit <https://www.abcam.com/abpromise> or contact our technical team.

Terms and conditions

- Guarantee only valid for products bought direct from Abcam or one of our authorized distributors