


## Product datasheet

# Anti-eIF4B antibody ab38359

[2 Images](#)

### Overview

---

<b>Product name</b>	Anti-eIF4B antibody
<b>Description</b>	Rabbit polyclonal to eIF4B
<b>Host species</b>	Rabbit
<b>Tested applications</b>	<b>Suitable for:</b> WB, ICC/IF
<b>Species reactivity</b>	<b>Reacts with:</b> Human <b>Predicted to work with:</b> Mouse, Rat, Cow, Zebrafish 
<b>Immunogen</b>	Synthetic peptide conjugated to KLH derived from within residues 300 - 400 of Human eIF4B. Read Abcam's proprietary immunogen policy (Peptide available as <a href="#">ab38358</a> .)
<b>Positive control</b>	This antibody gave a positive signal in the following whole cell lysates: HeLa (Human epithelial carcinoma cell line) Jurkat (Human T cell lymphoblast-like cell line) A431 (Human epithelial carcinoma cell line) HEK293 (Human embryonic kidney cell line) HepG2 (Human hepatocellular liver carcinoma cell line) SHSY-5Y (Human neuroblastoma cell line)

### Properties

---

<b>Form</b>	Liquid
<b>Storage instructions</b>	Shipped at 4°C. Store at +4°C short term (1-2 weeks). Upon delivery aliquot. Store at -20°C or -80°C. Avoid freeze / thaw cycle.
<b>Storage buffer</b>	Preservative: 0.02% Sodium Azide Constituents: 1% BSA, PBS, pH 7.4
<b>Purity</b>	Immunogen affinity purified
<b>Clonality</b>	Polyclonal
<b>Isotype</b>	IgG

### Applications

---

Our [Abpromise guarantee](#) covers the use of **ab38359** in the following tested applications.

The application notes include recommended starting dilutions; optimal dilutions/concentrations should be determined by the end user.

Application	Abreviews	Notes
WB		Use a concentration of 1 µg/ml. Detects a band of approximately 80 kDa (predicted molecular weight: 69 kDa).
ICC/IF		Use a concentration of 1 µg/ml.

## Target

### Function

Required for the binding of mRNA to ribosomes. Functions in close association with EIF4-F and EIF4-A. Binds near the 5'-terminal cap of mRNA in presence of EIF-4F and ATP. Promotes the ATPase activity and the ATP-dependent RNA unwinding activity of both EIF4-A and EIF4-F.

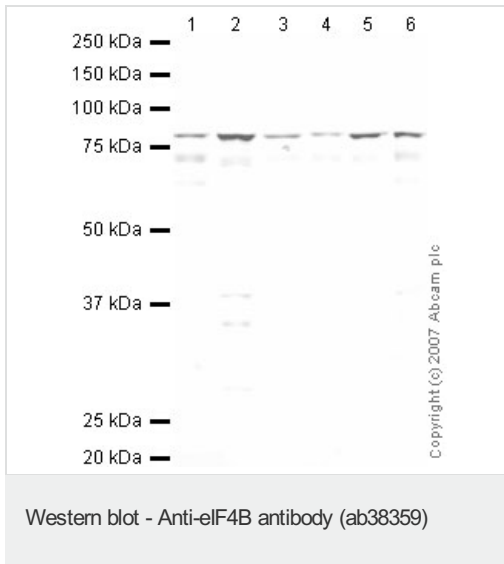
### Sequence similarities

Contains 1 RRM (RNA recognition motif) domain.

### Post-translational modifications

Phosphorylated at Ser-422 by RPS6KA1 and RPS6KB1; phosphorylation enhances the affinity of EIF4B for the EIF3 complex.

## Images



**All lanes :** Anti-eIF4B antibody (ab38359) at 1 µg/ml

**Lane 1 :** HeLa (Human epithelial carcinoma cell line) Whole Cell Lysate

**Lane 2 :** Jurkat (Human T cell lymphoblast-like cell line) Whole Cell Lysate

**Lane 3 :** A431 (Human epithelial carcinoma cell line) Whole Cell Lysate

**Lane 4 :** HEK293 Human embryonic kidney cell line Whole Cell Lysate

**Lane 5 :** HepG2 (Human hepatocellular liver carcinoma cell line) Whole Cell Lysate

**Lane 6 :** SHSY-5Y (Human neuroblastoma cell line) Whole Cell Lysate

Lysates/proteins at 10 µg per lane.

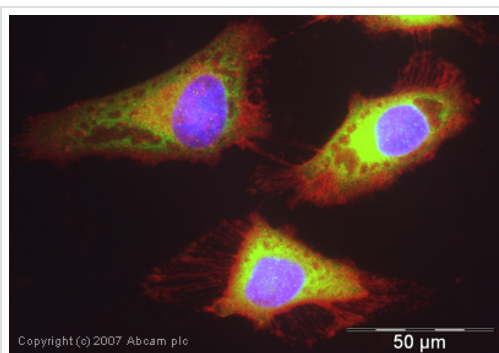
### Secondary

**All lanes :** IRDye 680 Conjugated Goat Anti-Rabbit IgG (H+L) at 1/10000 dilution

Performed under reducing conditions.

**Predicted band size:** 69 kDa

**Observed band size:** 80 kDa



Immunocytochemistry/ Immunofluorescence - Anti-eIF4B antibody (ab38359)

ICC/IF image of ab38359 stained human HeLa cells.

The cells were PFA fixed (10 min), permeabilised in TBS-T (20 min) and incubated with the antibody (ab38359, 1µg/ml) for 1h at room temperature. 1%BSA / 10% normal serum / 0.3M glycine was used to quench autofluorescence and block non-specific protein-protein interactions. The secondary antibody (green) was Alexa Fluor® 488 goat anti-rabbit IgG (H+L) used at a 1/1000 dilution for 1h. Alexa Fluor® 594 WGA was used to label plasma membranes (red). DAPI was used to stain the cell nuclei (blue).

**Please note:** All products are "FOR RESEARCH USE ONLY AND ARE NOT INTENDED FOR DIAGNOSTIC OR THERAPEUTIC USE"

## **Our Abpromise to you: Quality guaranteed and expert technical support**

---

- Replacement or refund for products not performing as stated on the datasheet
- Valid for 12 months from date of delivery
- Response to your inquiry within 24 hours
  
- We provide support in Chinese, English, French, German, Japanese and Spanish
- Extensive multi-media technical resources to help you
- We investigate all quality concerns to ensure our products perform to the highest standards

If the product does not perform as described on this datasheet, we will offer a refund or replacement. For full details of the Abpromise, please visit <https://www.abcam.com/abpromise> or contact our technical team.

## **Terms and conditions**

---

- Guarantee only valid for products bought direct from Abcam or one of our authorized distributors