


Product datasheet

Anti-EAAT4 antibody ab41650

★★★★★ 5 Abreviews 3 References 1 Image

Overview

<b>Product name</b>	Anti-EAAT4 antibody
<b>Description</b>	Rabbit polyclonal to EAAT4
<b>Host species</b>	Rabbit
<b>Tested applications</b>	<b>Suitable for:</b> WB
<b>Species reactivity</b>	<b>Reacts with:</b> Mouse <b>Predicted to work with:</b> Rat, Dog, Human 
<b>Immunogen</b>	Synthetic peptide conjugated to KLH derived from within residues 500 to the C-terminus of Human EAAT4. Read Abcam's proprietary immunogen policy (Peptide available as <a href="#">ab45367</a> .)
<b>Positive control</b>	This antibody gave a positive signal in Mouse Cerebellum tissue lysate.
<b>General notes</b>	<p>The Life Science industry has been in the grips of a reproducibility crisis for a number of years. Abcam is leading the way in addressing this with our range of recombinant monoclonal antibodies and knockout edited cell lines for gold-standard validation. Please check that this product meets your needs before purchasing.</p> <p>If you have any questions, special requirements or concerns, please send us an inquiry and/or contact our Support team ahead of purchase. Recommended alternatives for this product can be found below, along with publications, customer reviews and Q&amp;As</p>

Properties

<b>Form</b>	Liquid
<b>Storage instructions</b>	Shipped at 4°C. Store at +4°C short term (1-2 weeks). Upon delivery aliquot. Store at -20°C or -80°C. Avoid freeze / thaw cycle.
<b>Storage buffer</b>	pH: 7.40 Preservative: 0.02% Sodium azide Constituent: PBS  Batches of this product that have a concentration < 1mg/ml may have BSA added as a stabilising agent. If you would like information about the formulation of a specific lot, please contact our scientific support team who will be happy to help.
<b>Purity</b>	Immunogen affinity purified
<b>Clonality</b>	Polyclonal

## Applications

**The Abpromise guarantee** Our [Abpromise guarantee](#) covers the use of ab41650 in the following tested applications. The application notes include recommended starting dilutions; optimal dilutions/concentrations should be determined by the end user.

Application	Abreviews	Notes
WB		Use a concentration of 1 mg/ml. Detects a band of approximately 66 kDa (predicted molecular weight: 61 kDa).

## Target

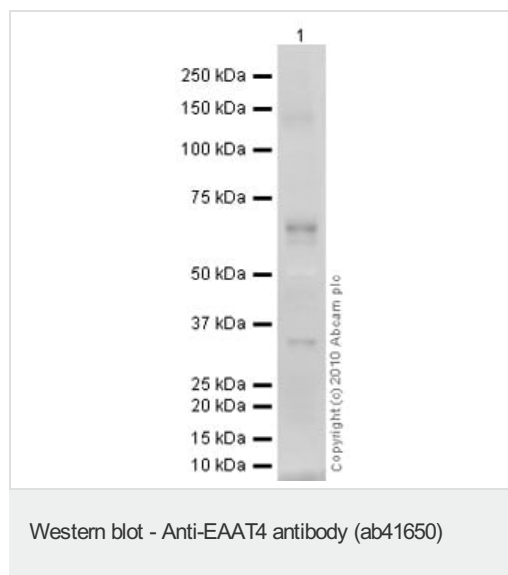
### Relevance

EAAT4 is expressed predominantly in the cerebellum (Purkinje cells) and weakly in the forebrain, where it transports L-glutamate, L-aspartate and D-aspartate, acting as a symport by cotransporting sodium. EAAT4 may function as a combined transporter and inhibitory glutamate receptor and also functions as an anion-selective ion channel.

### Cellular localization

Membrane; multi-pass membrane protein.

## Images



Anti-EAAT4 antibody (ab41650) at 1 µg/ml + Cerebellum Mouse Tissue Lysate at 10 µg

### Secondary

Goat polyclonal to Rabbit IgG - H&L - Pre-Adsorbed (HRP) at 1/3000 dilution

Performed under reducing conditions.

**Predicted band size:** 61 kDa

**Observed band size:** 66 kDa

**Additional bands at:** 35 kDa. We are unsure as to the identity of these extra bands.

**Exposure time:** 12 minutes

**Please note:** All products are "FOR RESEARCH USE ONLY. NOT FOR USE IN DIAGNOSTIC PROCEDURES"

**Our Abpromise to you: Quality guaranteed and expert technical support**

- Replacement or refund for products not performing as stated on the datasheet
- Valid for 12 months from date of delivery
- Response to your inquiry within 24 hours
  
- We provide support in Chinese, English, French, German, Japanese and Spanish
- Extensive multi-media technical resources to help you
- We investigate all quality concerns to ensure our products perform to the highest standards

If the product does not perform as described on this datasheet, we will offer a refund or replacement. For full details of the Abpromise, please visit <https://www.abcam.com/abpromise> or contact our technical team.

### **Terms and conditions**

---

- Guarantee only valid for products bought direct from Abcam or one of our authorized distributors