



Product datasheet

Anti-EAAT5 antibody ab230207

2 Images

Overview

<b>Product name</b>	Anti-EAAT5 antibody
<b>Description</b>	Rabbit polyclonal to EAAT5
<b>Host species</b>	Rabbit
<b>Tested applications</b>	<b>Suitable for:</b> ICC/IF, IHC-P
<b>Species reactivity</b>	<b>Reacts with:</b> Human
<b>Immunogen</b>	<p>Recombinant fragment corresponding to Human EAAT5 aa 115-220.            Sequence:</p> <p>HPGSAAQKETTEQSGKPIMSSADALLDLIRNMFPANLV            EATFKQYRTKTT            PVVKSPKVAPEEAPPRRILYGVQEENGSHVQNFALDL            TPPPEVVYKSEP GTSDGM</p> <p>Database link: <a href="#">O00341</a></p> <p style="text-align: right;">  <a href="#">Run BLAST with</a>                 <a href="#">Run BLAST with</a> </p>
<b>Positive control</b>	IHC-P: Human kidney tissue. ICC/IF: HepG2 cells.
<b>General notes</b>	This product was previously labelled as SLC1A7

Properties

<b>Form</b>	Liquid
<b>Storage instructions</b>	Shipped at 4°C. Store at +4°C short term (1-2 weeks). Upon delivery aliquot. Store at -20°C long term. Avoid freeze / thaw cycle.
<b>Storage buffer</b>	<p>pH: 7.30            Preservative: 0.02% Sodium azide            Constituents: PBS, 50% Glycerol</p>
<b>Purity</b>	Immunogen affinity purified
<b>Clonality</b>	Polyclonal
<b>Isotype</b>	IgG

## Applications

Our [Abpromise guarantee](#) covers the use of **ab230207** in the following tested applications.

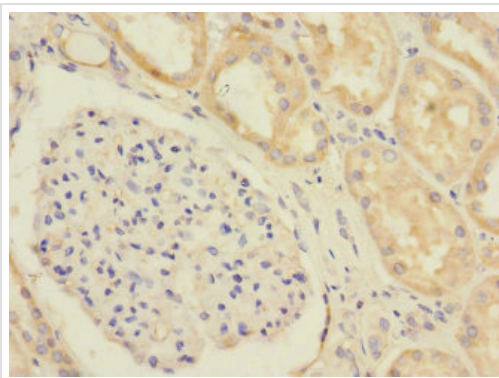
The application notes include recommended starting dilutions; optimal dilutions/concentrations should be determined by the end user.

Application	Abreviews	Notes
ICC/IF		1/50 - 1/200.
IHC-P		1/20 - 1/200.

## Target

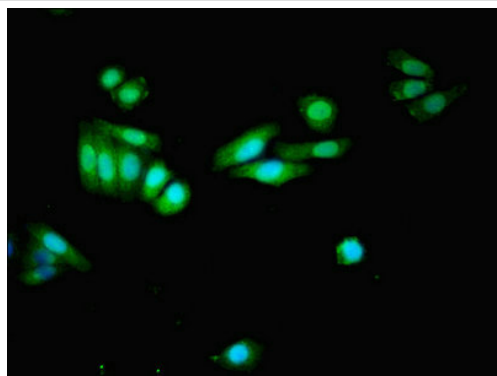
<b>Function</b>	Transports L-glutamate; the L-glutamate uptake is sodium- and voltage-dependent and chloride-independent. Its associated chloride conductance may participate in visual processing.
<b>Tissue specificity</b>	Expressed primarily in retina. Detectable in liver, heart, muscle and brain.
<b>Sequence similarities</b>	Belongs to the dicarboxylate/amino acid:cation symporter (DAACS) (TC 2.A.23) family. SLC1A7 subfamily.
<b>Cellular localization</b>	Membrane.

## Images



Paraffin-embedded human kidney tissue stained for EAAT5 using ab230207 at 1/100 dilution in immunohistochemical analysis.

Immunohistochemistry (Formalin/PFA-fixed paraffin-embedded sections) - Anti-EAAT5 antibody (ab230207)



Immunocytochemistry/ Immunofluorescence - Anti-EAAT5 antibody (ab230207)

HepG2 (human liver hepatocellular carcinoma cell line) cells stained for EAAT5 (green) using ab230207 at 1/100 dilution in ICC/IF, followed by Alexa Fluor 488<sup>®</sup> conjugated Goat Anti-Rabbit IgG (H+L).

**Please note:** All products are "FOR RESEARCH USE ONLY. NOT FOR USE IN DIAGNOSTIC PROCEDURES"

### Our Abpromise to you: Quality guaranteed and expert technical support

---

- Replacement or refund for products not performing as stated on the datasheet
- Valid for 12 months from date of delivery
- Response to your inquiry within 24 hours
- We provide support in Chinese, English, French, German, Japanese and Spanish
- Extensive multi-media technical resources to help you
- We investigate all quality concerns to ensure our products perform to the highest standards

If the product does not perform as described on this datasheet, we will offer a refund or replacement. For full details of the Abpromise, please visit <https://www.abcam.com/abpromise> or contact our technical team.

### Terms and conditions

---

- Guarantee only valid for products bought direct from Abcam or one of our authorized distributors