




## Product datasheet

# Anti-EB2 antibody ab253007

5 Images

### Overview

<b>Product name</b>	Anti-EB2 antibody
<b>Description</b>	Rabbit polyclonal to EB2
<b>Host species</b>	Rabbit
<b>Tested applications</b>	<b>Suitable for:</b> WB, IHC-P
<b>Species reactivity</b>	<p><b>Reacts with:</b> Human</p> <p><b>Predicted to work with:</b> Mouse, Rat, Chicken, Cow, Xenopus laevis, Orangutan </p>
<b>Immunogen</b>	<p>Recombinant fragment corresponding to Human EB2 aa 228-291.</p> <p>Sequence:</p> <p>SSSGSASKSDKDLETQVIQLNEQVHSLKLALEGVEKERD FYFGKLREIEL LCQEHGQENDDLQ</p> <p>Database link: <a href="#">Q15555</a></p> <p style="text-align: right;">  <a href="#">Run BLAST with</a>                 <a href="#">Run BLAST with</a> </p>
<b>Positive control</b>	IHC-P: Human cerebral cortex and colon tissue. WB: MAPRE2 overexpression HEK-293T lysate.
<b>General notes</b>	<p>Reproducibility is key to advancing scientific discovery and accelerating scientists' next breakthrough.</p> <p>Abcam is leading the way with our range of recombinant antibodies, knockout-validated antibodies and knockout cell lines, all of which support improved reproducibility.</p> <p>We are also planning to innovate the way in which we present recommended applications and species on our product datasheets, so that only applications &amp; species that have been tested in our own labs, our suppliers or by selected trusted collaborators are covered by our Abpromise™ guarantee.</p> <p>In preparation for this, we have started to update the applications &amp; species that this product is Abpromise guaranteed for.</p> <p>We are also updating the applications &amp; species that this product has been “predicted to work with,” however this information is not covered by our Abpromise guarantee.</p> <p>Applications &amp; species from publications and Abreviews that have not been tested in our own labs or in those of our suppliers are not covered by the Abpromise guarantee.</p> <p>Please check that this product meets your needs before purchasing. If you have any questions, special requirements or concerns, please send us an inquiry and/or contact our Support team ahead of purchase. Recommended alternatives for this product can be found below, as well as customer reviews and Q&amp;As.</p>

## Properties

---

<b>Form</b>	Liquid
<b>Storage instructions</b>	Shipped at 4°C. Store at +4°C short term (1-2 weeks). Upon delivery aliquot. Store at -20°C long term. Avoid freeze / thaw cycle.
<b>Storage buffer</b>	pH: 7.20 Preservative: 0.02% Sodium azide Constituents: 40% Glycerol (glycerin, glycerine), PBS
<b>Purity</b>	Immunogen affinity purified
<b>Clonality</b>	Polyclonal
<b>Isotype</b>	IgG

## Applications

---

Our [Abpromise guarantee](#) covers the use of **ab253007** in the following tested applications.

The application notes include recommended starting dilutions; optimal dilutions/concentrations should be determined by the end user.

Application	Abreviews	Notes
WB		Use a concentration of 0.04 - 0.4 µg/ml.
IHC-P		1/50 - 1/200. Perform heat mediated antigen retrieval with citrate buffer pH 6 before commencing with IHC staining protocol.

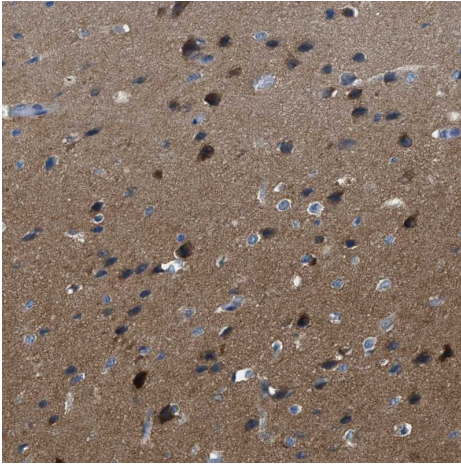
## Target

---

<b>Function</b>	May be involved in microtubule polymerization, and spindle function by stabilizing microtubules and anchoring them at centrosomes. May play a role in cell migration.
<b>Tissue specificity</b>	Expressed in different tumor cell lines. Up-regulated in activated B- and T-lymphocytes.
<b>Sequence similarities</b>	Belongs to the MAPRE family. Contains 1 CH (calponin-homology) domain. Contains 1 EB1 C-terminal domain.
<b>Domain</b>	Composed of two functionally independent domains. The N-terminal domain forms an hydrophobic cleft involved in microtubule binding and the C-terminal is involved in the formation of mutually exclusive complexes with APC and DCTN1.
<b>Cellular localization</b>	Cytoplasm > cytoskeleton. Associated with the microtubule network. Accumulates at the plus end of microtubules.

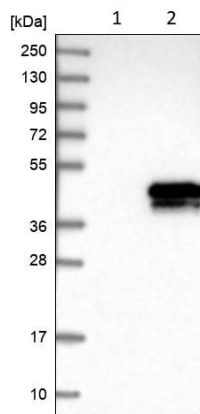
## Images

---



Immunohistochemistry (Formalin/PFA-fixed paraffin-embedded sections) - Anti-EB2 antibody (ab253007)

Paraffin-embedded human cerebral-cortex tissue stained for EB2 using ab253007 at 1/50 dilution in immunohistochemical analysis.

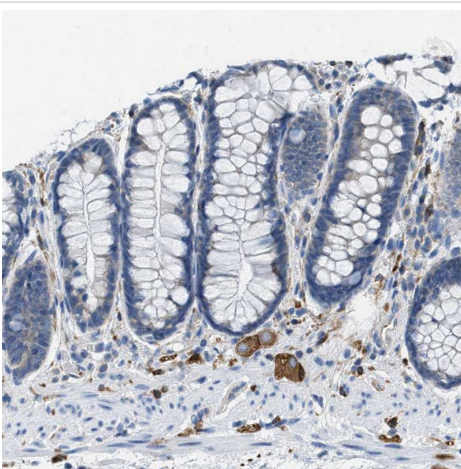


Western blot - Anti-EB2 antibody (ab253007)

**All lanes :** Anti-EB2 antibody (ab253007) at 0.4  $\mu\text{g/ml}$

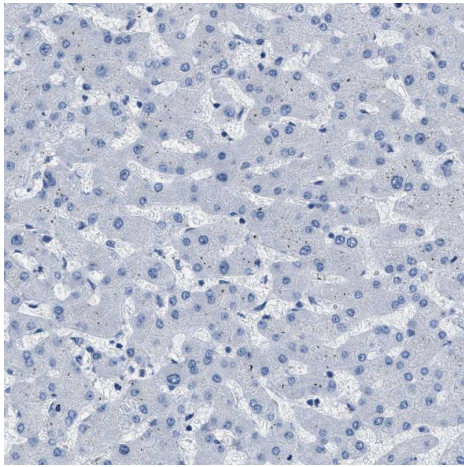
**Lane 1 :** Vector only transfected HEK-293T (Human epithelial cell line from embryonic kidney transformed with large T antigen) lysate

**Lane 2 :** MAPRE2 overexpression HEK-293T lysate



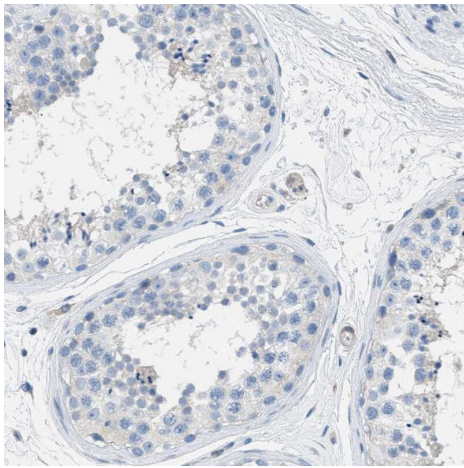
Immunohistochemistry (Formalin/PFA-fixed paraffin-embedded sections) - Anti-EB2 antibody (ab253007)

Paraffin-embedded human colon tissue stained for EB2 using ab253007 at 1/50 dilution in immunohistochemical analysis.



Immunohistochemistry (Formalin/PFA-fixed paraffin-embedded sections) - Anti-EB2 antibody (ab253007)

Paraffin-embedded human liver tissue stained for EB2 using ab253007 at 1/50 dilution in immunohistochemical analysis. No positivity in hepatocytes as expected.



Immunohistochemistry (Formalin/PFA-fixed paraffin-embedded sections) - Anti-EB2 antibody (ab253007)

Paraffin-embedded human testis tissue stained for EB2 using ab253007 at 1/50 dilution in immunohistochemical analysis. No positivity in cells in seminiferous ducts as expected.

**Please note:** All products are "FOR RESEARCH USE ONLY. NOT FOR USE IN DIAGNOSTIC PROCEDURES"

### Our Abpromise to you: Quality guaranteed and expert technical support

---

- Replacement or refund for products not performing as stated on the datasheet
- Valid for 12 months from date of delivery
- Response to your inquiry within 24 hours
- We provide support in Chinese, English, French, German, Japanese and Spanish
- Extensive multi-media technical resources to help you
- We investigate all quality concerns to ensure our products perform to the highest standards

If the product does not perform as described on this datasheet, we will offer a refund or replacement. For full details of the Abpromise, please visit <https://www.abcam.com/abpromise> or contact our technical team.

## Terms and conditions

---

- Guarantee only valid for products bought direct from Abcam or one of our authorized distributors