

Product datasheet

Anti-EBV Latent Membrane Protein 1 antibody [D24-G]
ab136633

2 Images

Overview

Product name	Anti-EBV Latent Membrane Protein 1 antibody [D24-G]
Description	Rabbit monoclonal [D24-G] to EBV Latent Membrane Protein 1
Host species	Rabbit
Tested applications	Suitable for: IHC-P
Species reactivity	Reacts with: Other species
Immunogen	Synthetic peptide derived from an internal region of EBV Latent Membrane Protein.
Epitope	Antibody recognizes the epitope located between Asp293 - Asp312
Positive control	Human lymph node tissue; corresponding to Hodgkin's lymphoma and EBV infectious mononucleosis.
General notes	<p>Reproducibility is key to advancing scientific discovery and accelerating scientists' next breakthrough.</p> <p>Abcam is leading the way with our range of recombinant antibodies, knockout-validated antibodies and knockout cell lines, all of which support improved reproducibility.</p> <p>We are also planning to innovate the way in which we present recommended applications and species on our product datasheets, so that only applications & species that have been tested in our own labs, our suppliers or by selected trusted collaborators are covered by our Abpromise™ guarantee.</p> <p>In preparation for this, we have started to update the applications & species that this product is Abpromise guaranteed for.</p> <p>We are also updating the applications & species that this product has been "predicted to work with," however this information is not covered by our Abpromise guarantee.</p> <p>Applications & species from publications and Abreviews that have not been tested in our own labs or in those of our suppliers are not covered by the Abpromise guarantee.</p> <p>Please check that this product meets your needs before purchasing. If you have any questions, special requirements or concerns, please send us an inquiry and/or contact our Support team ahead of purchase. Recommended alternatives for this product can be found below, as well as customer reviews and Q&As.</p>

Properties

Form	Liquid
Storage instructions	Shipped at 4°C. Store at +4°C short term (1-2 weeks). Store at -20°C or -80°C. Avoid freeze / thaw cycle.
Storage buffer	pH: 8.00 Preservative: 0.05% Sodium azide Constituents: 0.32% Tris HCl, 2% BSA
Purification notes	This immunoglobulin is the product of one single B-cell line from the crude anti-peptide polyclonal anti-serum. This antibody is purified using a propriety technique and offers a completely post-translationally modified and properly glycosylated antibody. This offers increased stability.
Clonality	Monoclonal
Clone number	D24-G
Isotype	IgG

Applications

Our [Abpromise guarantee](#) covers the use of **ab136633** in the following tested applications.

The application notes include recommended starting dilutions; optimal dilutions/concentrations should be determined by the end user.

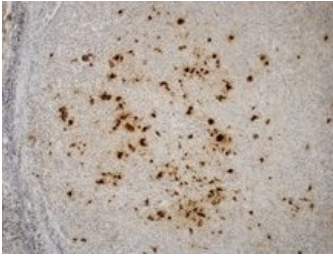
Application	Abreviews	Notes
IHC-P		1/100 - 1/200. Perform heat mediated antigen retrieval with citrate buffer pH 6 before commencing with IHC staining protocol.

Target

Relevance

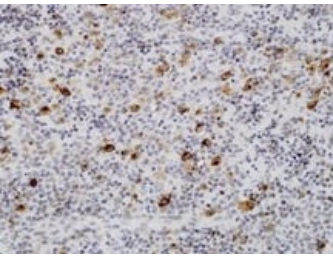
EBV is a human herpesvirus that establishes a life-long persistence in the host. The virus infects the vast majority of the world's adult population and is well known for its association with a broad spectrum of benign and malignant diseases, including infectious mononucleosis, Burkitt's lymphoma, nasopharyngeal carcinoma, and is causally associated with lymphoid and epithelial malignancies, including post-transplant lymphoproliferative disorders, Hodgkin's disease, anaplastic nasopharyngeal carcinoma and gastric carcinomas. Latent membrane protein 1 (LMP1) of Epstein-Barr virus (EBV) is a transforming protein that affects multiple cell signalling pathways and contributes to EBV-associated oncogenesis. LMP1 can be expressed in some states of EBV latency, and significant induction of full-length LMP1 is also observed frequently during virus reactivation into the lytic cycle. LMP1 is critical for EBV-infected cell activation, adhesion and survival, and is usually expressed in the malignant cells.

Images



Immunohistochemistry (Formalin/PFA-fixed paraffin-embedded sections) - Anti-EBV Latent Membrane Protein 1 antibody [D24-G] (ab136633)

Immunohistochemical analysis of Formalin-fixed, Paraffin-embedded Human lymph node tissue corresponding to Hodgkin's lymphoma labelling EBV Latent Membrane Protein with ab136633 antibody at 1/100 dilution.



Immunohistochemistry (Formalin/PFA-fixed paraffin-embedded sections) - Anti-EBV Latent Membrane Protein 1 antibody [D24-G] (ab136633)

Immunohistochemical analysis of Formalin-fixed, Paraffin-embedded Human lymph node tissue corresponding to EBV infectious mononucleosis labelling EBV Latent Membrane Protein with ab136633 antibody at 1/100 dilution.

Please note: All products are "FOR RESEARCH USE ONLY. NOT FOR USE IN DIAGNOSTIC PROCEDURES"

Our Abpromise to you: Quality guaranteed and expert technical support

- Replacement or refund for products not performing as stated on the datasheet
- Valid for 12 months from date of delivery
- Response to your inquiry within 24 hours
- We provide support in Chinese, English, French, German, Japanese and Spanish
- Extensive multi-media technical resources to help you
- We investigate all quality concerns to ensure our products perform to the highest standards

If the product does not perform as described on this datasheet, we will offer a refund or replacement. For full details of the Abpromise, please visit <https://www.abcam.com/abpromise> or contact our technical team.

Terms and conditions

- Guarantee only valid for products bought direct from Abcam or one of our authorized distributors