


## Product datasheet

# Anti-ECH1 antibody ab153720

**KO** VALIDATED

★★★★★ 2 Abreviews 5 Images

### Overview

<b>Product name</b>	Anti-ECH1 antibody
<b>Description</b>	Rabbit polyclonal to ECH1
<b>Host species</b>	Rabbit
<b>Tested applications</b>	<b>Suitable for:</b> WB, ICC/IF, IHC-P
<b>Species reactivity</b>	<b>Reacts with:</b> Mouse, Human <b>Predicted to work with:</b> Pig 
<b>Immunogen</b>	Recombinant fragment, corresponding to a region within amino acids 97-328 of Human ECH1 (Uniprot ID: Q13011).
<b>Positive control</b>	Recombinant Human ECH1 protein ( <a href="#">ab101154</a> ) can be used as a positive control in WB. A549, HepG2 and Mouse brain whole cell lysates; HeLa cells. IHC-P (FFPE): Human Colon (Normal) tissue.

### Properties

<b>Form</b>	Liquid
<b>Storage instructions</b>	Shipped at 4°C. Upon delivery aliquot. Store at -20°C or -80°C. Avoid freeze / thaw cycle.
<b>Storage buffer</b>	pH: 7.00 Preservative: 0.01% Thimerosal (merthiolate) Constituents: 1.21% Tris, 0.75% Glycine, 20% Glycerol
<b>Purity</b>	Immunogen affinity purified
<b>Clonality</b>	Polyclonal
<b>Isotype</b>	IgG

### Applications

Our [Abpromise guarantee](#) covers the use of **ab153720** in the following tested applications.

The application notes include recommended starting dilutions; optimal dilutions/concentrations should be determined by the end user.

Application	Abreviews	Notes
WB	★★★★★	1/500 - 1/3000. Predicted molecular weight: 36 kDa.
ICC/IF		1/100 - 1/1000.
IHC-P		Use a concentration of 1 µg/ml. Perform heat mediated antigen retrieval with citrate buffer pH 6 before commencing with IHC staining protocol.

## Target

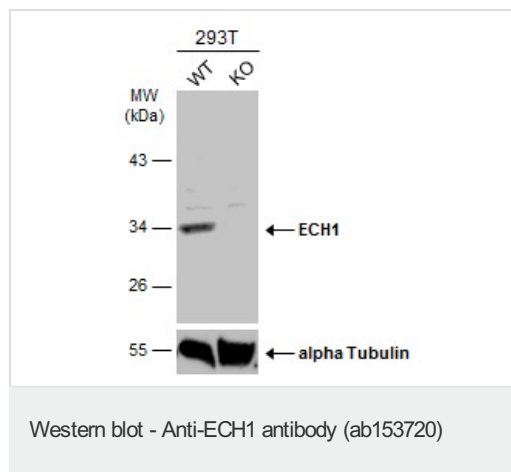
**Function** Isomerization of 3-trans,5-cis-dienoyl-CoA to 2-trans,4-trans-dienoyl-CoA.

**Pathway** Lipid metabolism; fatty acid beta-oxidation.

**Sequence similarities** Belongs to the enoyl-CoA hydratase/isomerase family.

**Cellular localization** Mitochondrion. Peroxisome.

## Images



**All lanes** : Anti-ECH1 antibody (ab153720) at 1/2000 dilution

**Lane 1** : WT 293T cell extracts

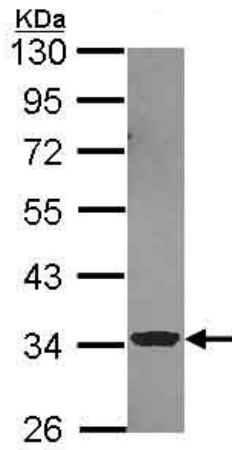
**Lane 2** : ECH1 Knockout 293T cell extracts

Lysates/proteins at 30 µg per lane.

**Secondary**

**All lanes** : HRP-conjugated anti-rabbit IgG

**Predicted band size:** 36 kDa

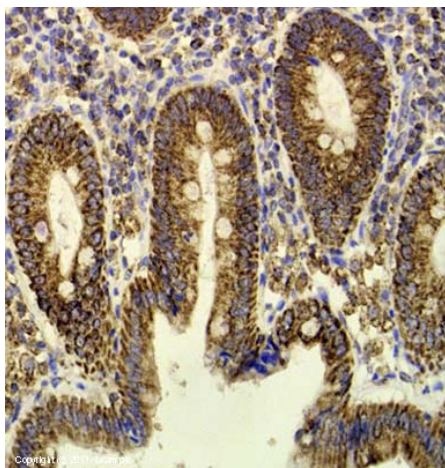


Western blot - Anti-ECH1 antibody (ab153720)

Anti-ECH1 antibody (ab153720) at 1/1000 dilution + A549 whole cell lysate at 30  $\mu$ g

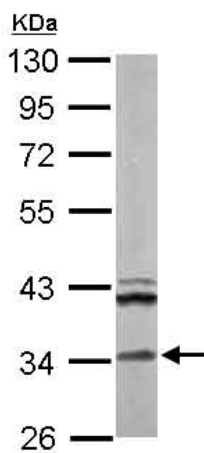
**Predicted band size:** 36 kDa

10% SDS PAGE



Immunohistochemistry (Formalin/PFA-fixed paraffin-embedded sections) - Anti-ECH1 antibody (ab153720)

IHC image of ECH1 staining in Human Colon formalin fixed paraffin embedded tissue section, performed on a Leica Bond system using the standard protocol F. The section was pre-treated using heat mediated antigen retrieval with sodium citrate buffer (pH6, epitope retrieval solution 1) for 20 mins. The section was then incubated with ab153720, 5 $\mu$ g/ml, for 15 mins at room temperature and detected using an HRP conjugated compact polymer system. DAB was used as the chromogen. The section was then counterstained with haematoxylin and mounted with DPX.

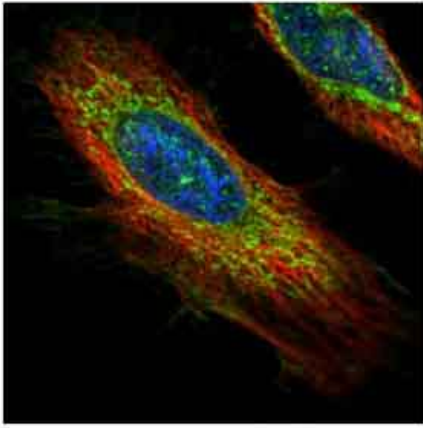


Western blot - Anti-ECH1 antibody (ab153720)

Anti-ECH1 antibody (ab153720) at 1/1000 dilution + Mouse brain whole cell lysate at 50  $\mu$ g

**Predicted band size:** 36 kDa

10% SDS PAGE



Confocal immunofluorescent analysis of methanol-fixed HeLa cells, labeling ECH1 with ab153720 at 1/500 dilution (green). Alpha-tubulin filaments labeled in red.

Immunocytochemistry/ Immunofluorescence - Anti-ECH1 antibody (ab153720)

**Please note:** All products are "FOR RESEARCH USE ONLY. NOT FOR USE IN DIAGNOSTIC PROCEDURES"

### **Our Abpromise to you: Quality guaranteed and expert technical support**

---

- Replacement or refund for products not performing as stated on the datasheet
- Valid for 12 months from date of delivery
- Response to your inquiry within 24 hours
- We provide support in Chinese, English, French, German, Japanese and Spanish
- Extensive multi-media technical resources to help you
- We investigate all quality concerns to ensure our products perform to the highest standards

If the product does not perform as described on this datasheet, we will offer a refund or replacement. For full details of the Abpromise, please visit <https://www.abcam.com/abpromise> or contact our technical team.

### **Terms and conditions**

---

- Guarantee only valid for products bought direct from Abcam or one of our authorized distributors