

Product datasheet

Anti-ECH1 antibody [EPR15449(B)] - C-terminal  
ab189255

Recombinant RabMAb

6 Images

Overview

<b>Product name</b>	Anti-ECH1 antibody [EPR15449(B)] - C-terminal
<b>Description</b>	Rabbit monoclonal [EPR15449(B)] to ECH1 - C-terminal
<b>Host species</b>	Rabbit
<b>Tested applications</b>	<b>Suitable for:</b> WB, IHC-P, ICC/IF, IP, Flow Cyt
<b>Species reactivity</b>	<b>Reacts with:</b> Human
<b>Immunogen</b>	Synthetic peptide within Human ECH1 aa 300 to the C-terminus (C terminal). The exact sequence is proprietary. Database link: <a href="#">Q13011</a>
<b>Positive control</b>	Human fetal liver, A549, Jurkat and HeLa lysates; Human endometrium and kidney tissues; MCF-7 cells; Jurkat cells.

General notes

Our RabMAb<sup>®</sup> technology is a patented hybridoma-based technology for making rabbit monoclonal antibodies. For details on our patents, please refer to [RabMAb<sup>®</sup> patents](#).

This product is a [recombinant rabbit monoclonal antibody](#).

Properties

<b>Form</b>	Liquid
<b>Storage instructions</b>	Shipped at 4°C. Store at +4°C short term (1-2 weeks). Upon delivery aliquot. Store at -20°C long term. Avoid freeze / thaw cycle.
<b>Storage buffer</b>	Preservative: 0.01% Sodium azide Constituents: 59% PBS, 40% Glycerol, 0.05% BSA
<b>Purity</b>	Protein A purified
<b>Clonality</b>	Monoclonal
<b>Clone number</b>	EPR15449(B)
<b>Isotype</b>	IgG

## Applications

Our [Abpromise guarantee](#) covers the use of **ab189255** in the following tested applications.

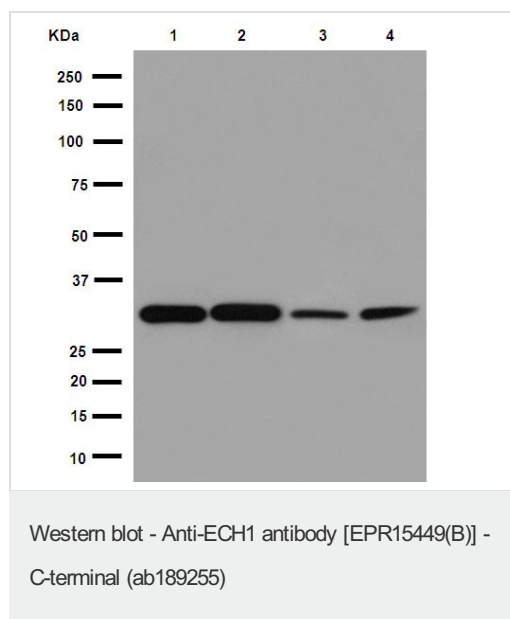
The application notes include recommended starting dilutions; optimal dilutions/concentrations should be determined by the end user.

Application	Abreviews	Notes
WB		1/10000 - 1/50000. Detects a band of approximately 33 kDa (predicted molecular weight: 36 kDa).
IHC-P		1/250 - 1/500. Perform heat mediated antigen retrieval with EDTA buffer pH 9.0 before commencing with IHC staining protocol.
ICC/IF		1/100 - 1/250.
IP		1/60.
Flow Cyt		1/20. <a href="#">ab172730</a> - Rabbit monoclonal IgG, is suitable for use as an isotype control with this antibody.

## Target

<b>Function</b>	Isomerization of 3-trans,5-cis-dienoyl-CoA to 2-trans,4-trans-dienoyl-CoA.
<b>Pathway</b>	Lipid metabolism; fatty acid beta-oxidation.
<b>Sequence similarities</b>	Belongs to the enoyl-CoA hydratase/isomerase family.
<b>Cellular localization</b>	Mitochondrion. Peroxisome.

## Images



**All lanes** : Anti-ECH1 antibody [EPR15449(B)] - C-terminal (ab189255) at 1/50000 dilution

**Lane 1** : Human fetal liver lysate

**Lane 2** : A549 cell lysate

**Lane 3** : Jurkat cell lysate

**Lane 4** : HeLa cell lysate

Lysates/proteins at 20 µg per lane.

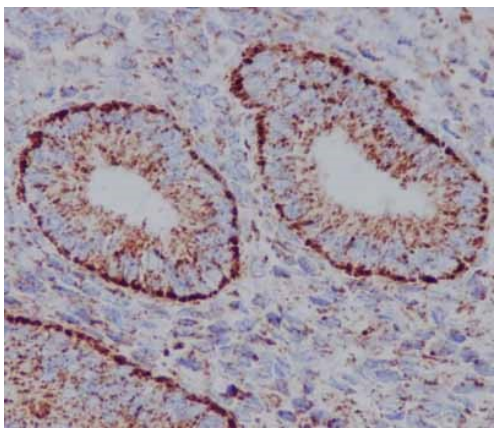
### Secondary

**All lanes** : Goat Anti-Rabbit IgG, (H+L), Peroxidase conjugate at 1/1000 dilution

**Predicted band size:** 36 kDa

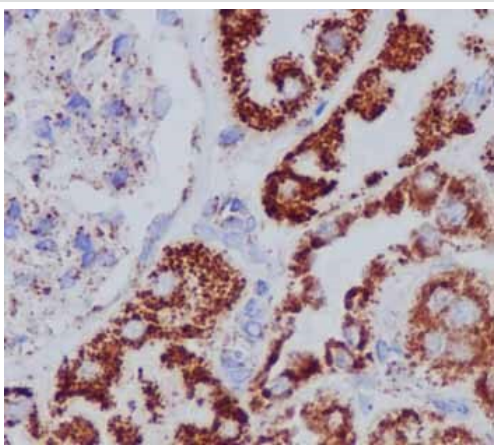
**Observed band size:** 33 kDa

[why is the actual band size different from the predicted?](#)



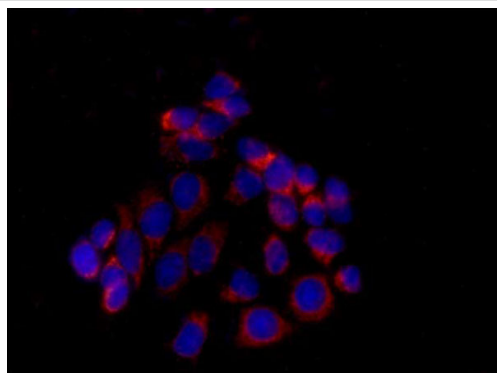
Immunohistochemical analysis of paraffin-embedded human endometrium tissue labeling ECH1 with [ab189254](#) at 1/500 dilution, followed by prediluted HRP Polymer for Rabbit IgG. Counter stained with Hematoxylin.

Immunohistochemistry (Formalin/PFA-fixed paraffin-embedded sections) - Anti-ECH1 antibody [EPR15449(B)] - C-terminal (ab189255)



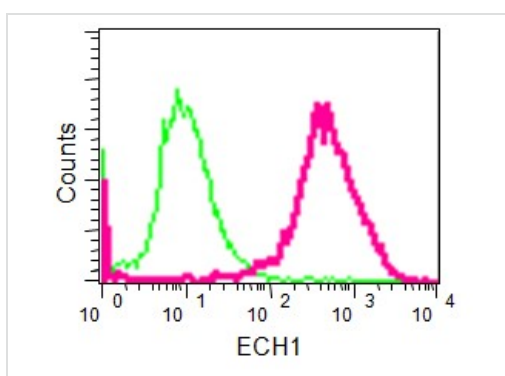
Immunohistochemical analysis of paraffin-embedded human kidney tissue labeling ECH1 with [ab189254](#) at 1/500 dilution, followed by prediluted HRP Polymer for Rabbit IgG. Counter stained with Hematoxylin.

Immunohistochemistry (Formalin/PFA-fixed paraffin-embedded sections) - Anti-ECH1 antibody [EPR15449(B)] - C-terminal (ab189255)



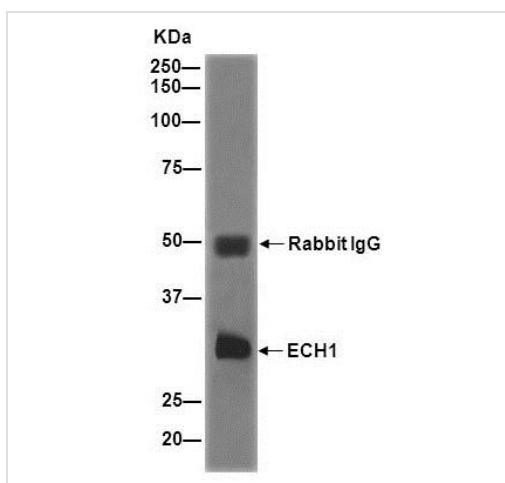
Immunocytochemistry/ Immunofluorescence - Anti-ECH1 antibody [EPR15449(B)] - C-terminal (ab189255)

Immunofluorescent analysis of 100% methanol(-20 $\text{\textcircled{C}}$ )-fixed MCF-7 cells labeling ECH1 with [ab189254](#) at 1/250 dilution, followed by Goat anti rabbit IgG (Alexa Fluor $\text{\textcircled{R}}$  555) secondary antibody at 1/200 dilution. Counter stained with DAPI.



Flow Cytometry - Anti-ECH1 antibody [EPR15449(B)] - C-terminal (ab189255)

Flow cytometric analysis of 2% paraformaldehyde-fixed Jurkat cells labeling ECH1 with [ab189255](#) at 1/20 dilution (red) compared to a Rabbit monoclonal IgG isotype control (green), followed by Goat anti rabbit IgG (FITC) secondary antibody at 1/150 dilution.



Immunoprecipitation - Anti-ECH1 antibody [EPR15449(B)] - C-terminal (ab189255)

Western blot analysis of ECH1 in human fetal liver lysate immunoprecipitated using [ab189254](#) at 1/50 dilution.

Secondary antibody: Goat Anti-Rabbit IgG, (H+L), Peroxidase conjugate at 1/1000 dilution.

**Please note:** All products are "FOR RESEARCH USE ONLY AND ARE NOT INTENDED FOR DIAGNOSTIC OR THERAPEUTIC USE"

## **Our Abpromise to you: Quality guaranteed and expert technical support**

---

- Replacement or refund for products not performing as stated on the datasheet
- Valid for 12 months from date of delivery
- Response to your inquiry within 24 hours
  
- We provide support in Chinese, English, French, German, Japanese and Spanish
- Extensive multi-media technical resources to help you
- We investigate all quality concerns to ensure our products perform to the highest standards

If the product does not perform as described on this datasheet, we will offer a refund or replacement. For full details of the Abpromise, please visit <https://www.abcam.com/abpromise> or contact our technical team.

## **Terms and conditions**

---

- Guarantee only valid for products bought direct from Abcam or one of our authorized distributors