


Product datasheet

Anti-EDD antibody - C-terminal ab226792

2 Images

Overview

Product name	Anti-EDD antibody - C-terminal
Description	Rabbit polyclonal to EDD - C-terminal
Host species	Rabbit
Tested applications	Suitable for: WB, ICC/IF
Species reactivity	Reacts with: Human Predicted to work with: Mouse, Cow 
Immunogen	Recombinant fragment within Human EDD (C terminal). The exact sequence is proprietary. Database link: O95071
Positive control	WB: U-87 MG whole cell lysate and nuclear extract. ICC/IF: U-87 MG cells.
General notes	<p>Reproducibility is key to advancing scientific discovery and accelerating scientists' next breakthrough.</p> <p>Abcam is leading the way with our range of recombinant antibodies, knockout-validated antibodies and knockout cell lines, all of which support improved reproducibility.</p> <p>We are also planning to innovate the way in which we present recommended applications and species on our product datasheets, so that only applications & species that have been tested in our own labs, our suppliers or by selected trusted collaborators are covered by our Abpromise™ guarantee.</p> <p>In preparation for this, we have started to update the applications & species that this product is Abpromise guaranteed for.</p> <p>We are also updating the applications & species that this product has been “predicted to work with,” however this information is not covered by our Abpromise guarantee.</p> <p>Applications & species from publications and Abreviews that have not been tested in our own labs or in those of our suppliers are not covered by the Abpromise guarantee.</p> <p>Please check that this product meets your needs before purchasing. If you have any questions, special requirements or concerns, please send us an inquiry and/or contact our Support team ahead of purchase. Recommended alternatives for this product can be found below, as well as customer reviews and Q&As.</p>

Properties

Form	Liquid
Storage instructions	Shipped at 4°C. Store at +4°C short term (1-2 weeks). Upon delivery aliquot. Store at -20°C long term. Avoid freeze / thaw cycle.
Storage buffer	pH: 7.00 Preservative: 0.025% Proclin 300 Constituents: 79% PBS, 20% Glycerol (glycerin, glycerine)
Purity	Immunogen affinity purified
Clonality	Polyclonal
Isotype	IgG

Applications

Our [Abpromise guarantee](#) covers the use of **ab226792** in the following tested applications.

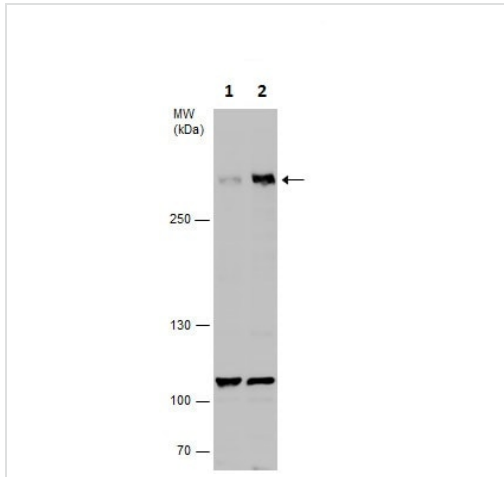
The application notes include recommended starting dilutions; optimal dilutions/concentrations should be determined by the end user.

Application	Abreviews	Notes
WB		1/500 - 1/3000. Predicted molecular weight: 309 kDa.
ICC/IF		1/100 - 1/1000.

Target

Function	E3 ubiquitin-protein ligase which is a component of the N-end rule pathway. Recognizes and binds to proteins bearing specific amino-terminal residues that are destabilizing according to the N-end rule, leading to their ubiquitination and subsequent degradation (By similarity). May be involved in maturation and/or transcriptional regulation of mRNA. May play a role in control of cell cycle progression. May have tumor suppressor function. Regulates DNA topoisomerase II binding protein (TopBP1) in the DNA damage response. Plays an essential role in extraembryonic development.
Tissue specificity	Widely expressed. Most abundant in testis and expressed at high levels in brain, pituitary and kidney.
Pathway	Protein modification; protein ubiquitination.
Sequence similarities	Contains 1 HECT (E6AP-type E3 ubiquitin-protein ligase) domain. Contains 1 PABC domain. Contains 1 UBR-type zinc finger.
Post-translational modifications	Phosphorylated upon DNA damage, probably by ATM or ATR.
Cellular localization	Nucleus.

Images



Western blot - Anti-EDD antibody - C-terminal (ab226792)

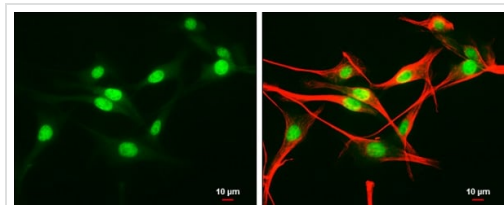
All lanes : Anti-EDD antibody - C-terminal (ab226792) at 1/500 dilution

Lane 1 : U-87 MG (human glioblastoma-astrocytoma epithelial cell line) whole cell lysate

Lane 2 : U-87 MG (human glioblastoma-astrocytoma epithelial cell line) nuclear extract

Lysates/proteins at 30 µg per lane.

Predicted band size: 309 kDa



Immunocytochemistry/ Immunofluorescence - Anti-EDD antibody - C-terminal (ab226792)

4% paraformaldehyde-fixed, U-87 MG (human glioblastoma-astrocytoma epithelial cell line) cells stained for EDD (green) using ab226792 at 1/500 dilution in ICC/IF.

Alpha-Tubulin is detected with an anti-alpha-Tubulin antibody at 1/1000 dilution (red).

Please note: All products are "FOR RESEARCH USE ONLY. NOT FOR USE IN DIAGNOSTIC PROCEDURES"

Our Abpromise to you: Quality guaranteed and expert technical support

- Replacement or refund for products not performing as stated on the datasheet
- Valid for 12 months from date of delivery
- Response to your inquiry within 24 hours
- We provide support in Chinese, English, French, German, Japanese and Spanish
- Extensive multi-media technical resources to help you
- We investigate all quality concerns to ensure our products perform to the highest standards

If the product does not perform as described on this datasheet, we will offer a refund or replacement. For full details of the Abpromise, please visit <https://www.abcam.com/abpromise> or contact our technical team.

Terms and conditions

- Guarantee only valid for products bought direct from Abcam or one of our authorized distributors