



Product datasheet

Anti-EEA1 antibody ab206860

2 Images

Overview

Product name	Anti-EEA1 antibody
Description	Goat polyclonal to EEA1
Host species	Goat
Tested applications	Suitable for: WB, ICC/IF
Species reactivity	Reacts with: Mouse, Human
Immunogen	Synthetic peptide corresponding to Human EEA1 aa 821-835 (internal sequence). NP_003557.2. Sequence: QETKIQHEELNRIQ Database link: Q15075  Run BLAST with  Run BLAST with
Positive control	A549 and HEK293 lysates.

Properties

Form	Liquid
Storage instructions	Shipped at 4°C. Store at +4°C short term (1-2 weeks). Upon delivery aliquot. Store at -20°C long term. Avoid freeze / thaw cycle.
Storage buffer	pH: 7.3 Preservative: 0.02% Sodium azide Constituents: 99% Tris buffered saline, 0.5% BSA
Purity	Immunogen affinity purified
Purification notes	ab206860 is purified from goat serum by ammonium sulphate precipitation followed by antigen affinity chromatography using the immunizing peptide.
Clonality	Polyclonal
Isotype	IgG

Applications

Our [Abpromise guarantee](#) covers the use of **ab206860** in the following tested applications.

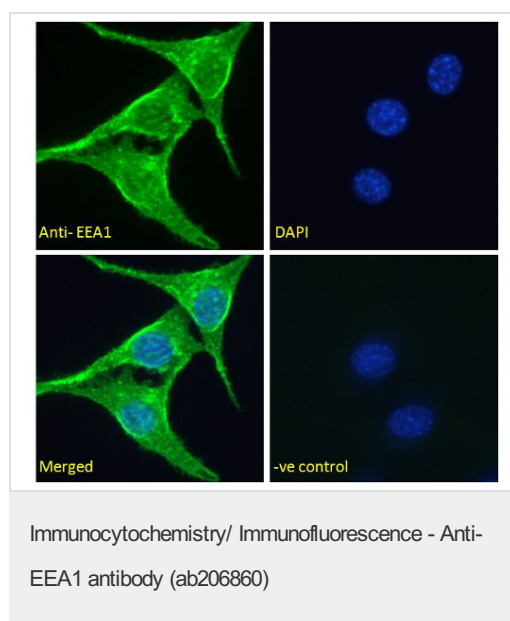
The application notes include recommended starting dilutions; optimal dilutions/concentrations should be determined by the end user.

Application	Abreviews	Notes
WB		Use a concentration of 0.3 - 1 µg/ml. Detects a band of approximately 200 kDa (predicted molecular weight: 162 kDa).
ICC/IF		Use a concentration of 5 µg/ml.

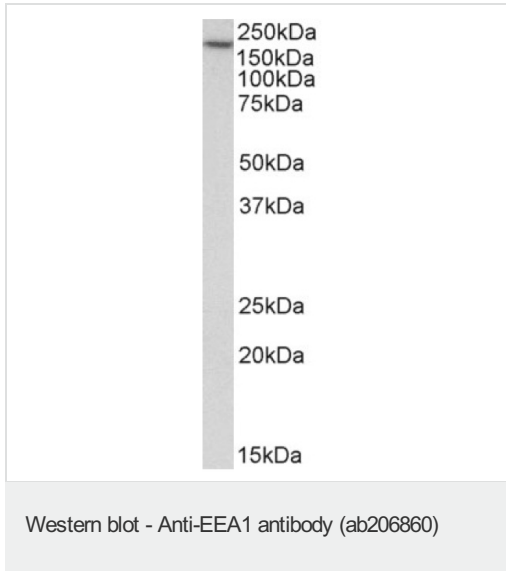
Target

Function	Binds phospholipid vesicles containing phosphatidylinositol 3-phosphate and participates in endosomal trafficking.
Sequence similarities	Contains 1 C2H2-type zinc finger. Contains 1 FYVE-type zinc finger.
Domain	The FYVE-type zinc finger domain mediates interactions with phosphatidylinositol 3-phosphate in membranes of early endosomes and penetrates bilayers. The FYVE domain insertion into PtdIns(3)P-enriched membranes is substantially increased in acidic conditions.
Cellular localization	Cytoplasm. Early endosome membrane.

Images



Immunofluorescence analysis of paraformaldehyde fixed NIH3T3 cells permeabilized with 0.15% Triton staining EEA1. Primary incubation with ab206860 (5µg/ml) for 1 hour followed by Alexa Fluor 488 secondary antibody (2µg/ml). Nuclear counter stain is DAPI.



Anti-EEA1 antibody (ab206860) at 0.3 µg/ml + HEK293 lysate (in RIPA buffer) at 35 µg

Developed using the ECL technique.

Predicted band size: 162 kDa

Please note: All products are "FOR RESEARCH USE ONLY. NOT FOR USE IN DIAGNOSTIC PROCEDURES"

Our Abpromise to you: Quality guaranteed and expert technical support

- Replacement or refund for products not performing as stated on the datasheet
- Valid for 12 months from date of delivery
- Response to your inquiry within 24 hours
- We provide support in Chinese, English, French, German, Japanese and Spanish
- Extensive multi-media technical resources to help you
- We investigate all quality concerns to ensure our products perform to the highest standards

If the product does not perform as described on this datasheet, we will offer a refund or replacement. For full details of the Abpromise, please visit <https://www.abcam.com/abpromise> or contact our technical team.

Terms and conditions

- Guarantee only valid for products bought direct from Abcam or one of our authorized distributors