


Product datasheet

Anti-EED antibody ab254569

3 Images

Overview

---

<b>Product name</b>	Anti-EED antibody
<b>Description</b>	Rabbit polyclonal to EED
<b>Host species</b>	Rabbit
<b>Tested applications</b>	<b>Suitable for:</b> WB, ICC/IF
<b>Species reactivity</b>	<b>Reacts with:</b> Human <b>Predicted to work with:</b> Chicken, Cow 
<b>Immunogen</b>	Synthetic peptide within Human EED aa 30-80. The exact sequence is proprietary. 18 amino acids long. Database link: <a href="#">O75530</a>
<b>Positive control</b>	WB: Human heart and testis tissue lysate. ICC/IF: Human heart tissue.
<b>General notes</b>	The Life Science industry has been in the grips of a reproducibility crisis for a number of years. Abcam is leading the way in addressing this with our range of recombinant monoclonal antibodies and knockout edited cell lines for gold-standard validation. Please check that this product meets your needs before purchasing.  If you have any questions, special requirements or concerns, please send us an inquiry and/or contact our Support team ahead of purchase. Recommended alternatives for this product can be found below, along with publications, customer reviews and Q&As

Properties

---

<b>Form</b>	Liquid
<b>Storage instructions</b>	Shipped at 4°C. Store at +4°C short term (1-2 weeks). Upon delivery aliquot. Store at -20°C long term. Avoid freeze / thaw cycle.
<b>Storage buffer</b>	pH: 7.2 Preservative: 0.02% Sodium azide Constituent: PBS
<b>Purity</b>	Immunogen affinity purified
<b>Clonality</b>	Polyclonal
<b>Isotype</b>	IgG

## Applications

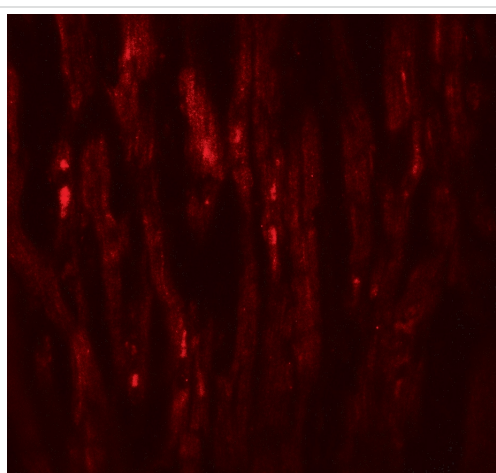
**The Abpromise guarantee** Our [Abpromise guarantee](#) covers the use of ab254569 in the following tested applications. The application notes include recommended starting dilutions; optimal dilutions/concentrations should be determined by the end user.

Application	Abreviews	Notes
WB		Use a concentration of 1 - 2 µg/ml. Predicted molecular weight: 50 kDa.
ICC/IF		Use a concentration of 20 µg/ml.

## Target

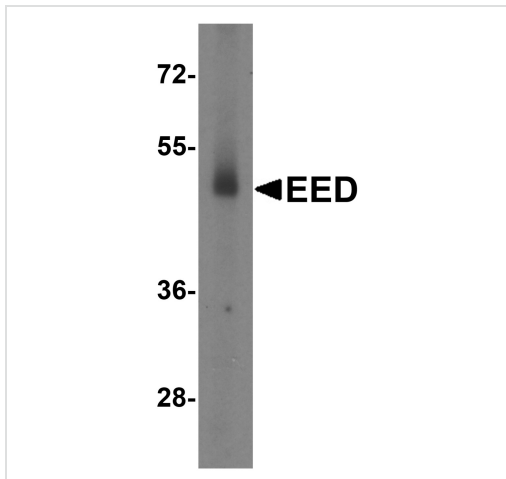
<b>Function</b>	Polycomb group (PcG) protein. Component of the PRC2/EED-EZH2 complex, which methylates 'Lys-9' and 'Lys-27' of histone H3, leading to transcriptional repression of the affected target gene. The PRC2/EED-EZH2 complex may also serve as a recruiting platform for DNA methyltransferases, thereby linking two epigenetic repression systems. Genes repressed by the PRC2/EED-EZH2 complex include HOXC8, HOXA9, MYT1 and CDKN2A.
<b>Tissue specificity</b>	Expressed in brain, colon, heart, kidney, liver, lung, muscle, ovary, peripheral blood leukocytes, pancreas, placenta, prostate, spleen, small intestine, testis, thymus and uterus. Appears to be overexpressed in breast and colon cancer.
<b>Sequence similarities</b>	Belongs to the WD repeat ESC family. Contains 7 WD repeats.
<b>Developmental stage</b>	Expression peaks at the G1/S phase boundary.
<b>Cellular localization</b>	Nucleus. Chromosome. Transiently colocalizes with XIST at inactive X chromosomes.

## Images



Immunocytochemistry/immunofluorescent analysis of human heart tissue labeling EED with ab254569 at 20µg/ml.

Immunocytochemistry/ Immunofluorescence - Anti-EED antibody (ab254569)

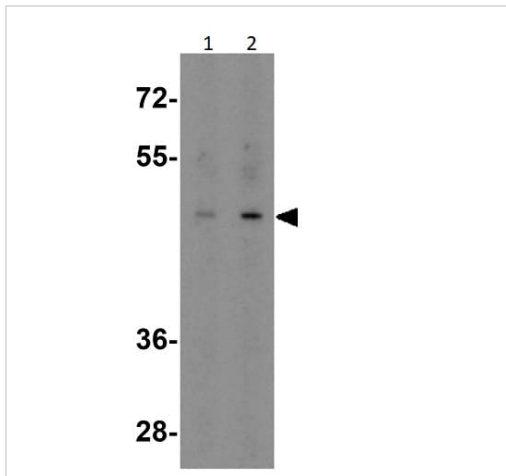


Western blot - Anti-EED antibody (ab254569)

Anti-EED antibody (ab254569) at 2 µg/ml + Human testis tissue lysate

**Predicted band size:** 50 kDa

**Observed band size:** 49 kDa



Western blot - Anti-EED antibody (ab254569)

**Lane 1 :** Anti-EED antibody (ab254569) at 1 µg/ml

**Lane 2 :** Anti-EED antibody (ab254569) at 2 µg/ml

**All lanes :** Human heart tissue lysate

**Predicted band size:** 50 kDa

**Observed band size:** 49 kDa

**Please note:** All products are "FOR RESEARCH USE ONLY. NOT FOR USE IN DIAGNOSTIC PROCEDURES"

### Our Abpromise to you: Quality guaranteed and expert technical support

- Replacement or refund for products not performing as stated on the datasheet
- Valid for 12 months from date of delivery
- Response to your inquiry within 24 hours
- We provide support in Chinese, English, French, German, Japanese and Spanish
- Extensive multi-media technical resources to help you
- We investigate all quality concerns to ensure our products perform to the highest standards

If the product does not perform as described on this datasheet, we will offer a refund or replacement. For full details of the Abpromise, please visit <https://www.abcam.com/abpromise> or contact our technical team.

## Terms and conditions

---

- Guarantee only valid for products bought direct from Abcam or one of our authorized distributors